

Remington®



2025 Ammunition Catalog

Table of Contents

RIFLE

NEW CORE-LOKT TIPPED LEVERGUN	10
CORE-LOKT TIPPED	11
PREMIER LONG RANGE	12
PREMIER SCIROCCO	13
PREMIER ACCUTIP-V	13
PREMIER MATCH	13
PREMIER ACCUTIP	13
360 BUCKHAMMER	14
PREMIER CUT	15
CORE-LOKT	16
CORE-LOKT COPPER	18
CORE-LOKT MANAGED RECOIL	18
HIGH PERFORMANCE RIFLE	18
SUBSONIC RIFLE	18
ULTIMATE DEFENSE RIFLE	19
UMC RIFLE	19
PREMIER ACCUTIP MZ	20
RELOADING COMPONENTS	21
ULTIMATE MUZZLELOADER	21

SHOTSHELL

NEW PREMIER ROYAL FLUSH	26
NEW DUCK CLUB STEEL	27
WINGMASTER HD	28
HYPERSONIC STEEL	28
PREMIER BISMUTH	28
NITRO STEEL DUPLEX	29
NITRO-STEEL	30
PREMIER TSS	31
PREMIER MAGNUM TURKEY	32
NITRO TURKEY	32
EXPRESS XLR	33
NITRO PIGEON	34
PHEASANT LOADS	34
NITRO MAGNUM EXTENDED RANGE BUFFERED	34
GAME LOADS	34
HEAVY DOVE LOADS	35
PREMIER ACCUTIP SABOT SLUG	36
SLUGGER RIFLED SLUG	37
SLUGGER HIGH VELOCITY	37
SLUGGER MANAGED RECOIL	37
EXPRESS BUCKSHOT & EXPRESS MAGNUM BUCKSHOT	37
EXPRESS BUCKSHOT VALUE PACK	38
RELOADING COMPONENTS	38
PREMIER STS	39
PREMIER NITRO SPORTING CLAYS	40
PREMIER NITRO 27	40
LOW DECIBEL	42
PETERS PREMIER	42
GUN CLUB TARGET LOAD	42
GUN CLUB CURE	43
ULTIMATE DEFENSE BUCKSHOT	44

HANDGUN

GOLDEN SABER BONDED	48
REMINGTON RANGE	48
CORE LOKT HANDGUN	48
SUBSONIC	48
GOLDEN SABER DEFENSE	49
HTP HIGH PERFORMANCE	49
REMINGTON RANGE CLEAN	50
PERFORMANCE WHEELGUN	50
UMC HANDGUN	51

RIMFIRE

NEW 22 SHORT	54
NEW PERFORMANCE WHEELGUN	54
NEW RANCH HAND	55
GOLDEN BULLET	55
SUBSONIC 22	56
CBEE 22	56
STANDARD V	56
22 VIPER	56
22 CYCLONE	56
22 YELLOW JACKET	56
22 TARGET	56
GOLDEN HUNTER	57
THUNDERBOLT	58
PREMIER MAGNUM AND MAGNUM RIMFIRE	58

SPECIFICATIONS

CENTERFIRE BALLISTICS	62
SHOTSHELL BALLISTICS	82
RIMFIRE BALLISTICS	92

Within this catalog, you may recognize some familiar graphics. Many of these cutaways are from the original works of the legendary artist Bob Kuhn. In the early 1960's, Mr. Kuhn was invited to work on a project with Remington advertising. This project expanded into Bob's works being featured more than seventy times in Remington calendars and catalogs. One of America's great wildlife artists, Bob's illustrations could be found in publications such as Field & Stream, Outdoor Life, and Sports Afield.

These products can expose you to chemicals including lead, which are known to the State of California to cause cancer, birth defects or other reproductive harm. For more information, go to www.P65Warnings.ca.gov.



Heritage of Excellence: 55 Years of Innovation at Remington

In Arkansas, we have a proud heritage of making the world's most recognizable ammunition. This team has been living and breathing ammo for the last 55 years out of the Lonoke facility. We have over one million square feet of space under roof and hundreds of dedicated employees who bleed green to get our customers what they want. Knowing that we support everyone from professional shooters to first-timers pulling the trigger on a 22 rifle keeps us motivated to make each experience out in the field or on the range a positive one for our customers.

Team Remington is proud of our ammunition because we are shooters ourselves. Whether an employee is passionate about sporting clays or hunting elk we understand the high expectations that consumers of our product have in the real world. We love to make ammo but live to experience the excitement that comes from using our products.

Please join us in using our new product offerings this year that went through rigorous testing and planning to provide new and improved performance. Rimfire is offering new products that have enhancements from the shape of the bullet all the way to the priming mix inside of every case. We have new shotshell hunting loads that give you a better chance to bag whatever bird you're chasing after. Our rifle offerings have been optimized to perform in ever action guns and maintain the same stopping power for big game you've come to expect from Core-Lokt.

We appreciate you choosing to shoot Remington ammunition. This team is proud of our past and dedicated to the future.

NEW PRODUCT HIGHLIGHTS



Performance Wheelgun™ 22

Designed to reduce noise output and for optimal performance in for your favorite six-shooter with the strong reliability that performs.

- Improved technology makes these rounds perform effortlessly in traditional revolvers

▶ See page 55 for more information



Duck Club Steel

An economical and versatile shotshell designed for all waterfowl.

- Designed for those seeking an economical steel load that has serious velocity
- Available in various shot sizes and payloads

▶ See page 28 for more information



22 Short

Remington is proud to reintroduce a 22 short round that is perfect for first time shooters who want to gain confidence in firearms or a varmint control specialist.

- Applicable for target shooting, varmint control, and first time shooters
- Remington's revamped rimfire process improves functionality

▶ See page 55 for more information



New Core-Lokt Calibers!

The Core-Lokt family of caliber continues to grow. For 2025 we are excited to add the following:

- 300 HAM'R - This new Core-Lokt addition was developed in collaboration with industry legend and pioneer, Bill Wilson of Wilson Combat
- 400 Legend - a new 'straight-wall' choice with the classic Core-Lokt features.

▶ See page 18 for more information

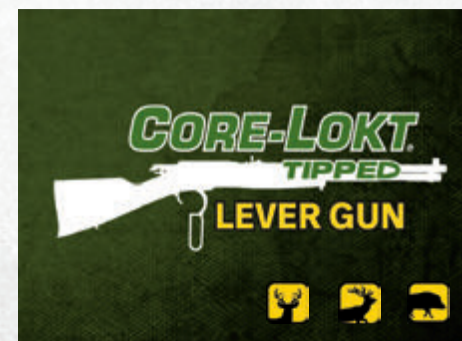


Premier Royal Flush

The ultimate shotshell load that is suited for all game birds found in the timber or an upland field.

- Magnum Grade payload to ensure knock down power
- No matter what you flush in the field, this shotshell will put meat in the pot

▶ See page 27 for more information



Core-Lokt Tipped Lever Gun

The iconic performance of our Core-Lokt bullet now specifically engineered for lever action rifles.

- Big green tip initiates rapid expansion and flawless function in lever actions
- Flatter trajectory. Higher B.C.

▶ See page 11 for more information



RIFLE

NEW CORE-LOKT TIPPED LEVERGUN	10
CORE-LOKT TIPPED	11
PREMIER LONG RANGE	12
PREMIER SCIROCCO	13
PREMIER ACCUTIP-V	13
PREMIER MATCH	13
PREMIER ACCUTIP	13
360 BUCKHAMMER	14
PREMIER CUT	15
CORE-LOKT	16
CORE-LOKT COPPER	18
CORE-LOKT MANAGED RECOIL	18
HIGH PERFORMANCE RIFLE	18
SUBSONIC RIFLE	18
ULTIMATE DEFENSE RIFLE	19
UMC RIFLE	19
PREMIER ACCUTIP MZ	20
RELOADING COMPONENTS	21
ULTIMATE MUZZLELOADER	21

“Core-Lokt tipped is a modern spin on a legendary bullet, bringing a sleek, tipped bullet profile for flatter trajectories while maintaining the traditional Core-Lokt terminal performance.”

– Logan Henry, Research and Development Engineer



Scan to hear the episode:
Rifle Roundtable: Discussing an Iconic Hunting Cartridge



RIFLE



Leading the Charge for Wildlife Conservation

Preserving Hunting Heritage Through Advocacy and Action

Remington® Ammunition continue to lead the industry and support wildlife conservation through various initiatives. Committed to ensuring the future of wildlife, Remington partners with conservation organizations to drive meaningful impact. The passion of its customers, employees and supporters who dedicate so much time pursuing ducks, deer, and other wildlife reflects the company's ongoing commitment to preserve our hunting heritage. As hunters across the nation seek rewarding experiences in the field, it is important to recognize that effective conservation efforts are the foundation of sustainable hunting. The organizations that Remington Ammunition supports understand this testament, and through their missions the future of conservation remains secure.

While on-the-ground habitat work is essential, it is equally important for our community to engage in strong advocacy for conservation policy work. Remington Ammunition has long maintained strong relationships within the advocacy and policy space through organizations such as the Congressional Sportsmen's Foundation™, Sportsmen's Alliance™, and National Shooting Sports Foundation™. These organizations lead the charge in the United States supporting sound scientific research in policy decisions that help wildlife of all types across the country.

Remington Ammunition has a robust history of manufacturing high-quality ammunition for hunters, target shooters, and our law enforcement community. As challenges continue to arise with our communities, Remington continues to step up to support our wildlife populations and our hunting and shooting heritages. This powerful passion sets Remington Ammunition apart from the competition.

Jon Zinnel

Jon Zinnel

Director of Conservation, Remington Ammunition



Remington's continued support of Delta Waterfowl® allows the organization's quest to put more ducks over decoys to become reality. They are proud to call themselves the "Duck Hunter's Organization." This statement resonates deeply with our customers and their passion for spending early mornings in the marsh or setting up field decoys in the predawn darkness. Delta Waterfowl supports healthy waterfowl populations through habitat projects on wetlands and nesting grounds, hen houses, and predator management strategies in areas of high-nesting concentrations in the prairie pothole region. The organization's passion for ducks matches Remington's dedication to manufacture the highest quality waterfowl loads available. Whether you choose the classic Nitro-Steel loads or the new Remington Premier Bismuth loads, Remington has you covered for your waterfowl pursuits.



Remington Ammunition is proud to support an organization that has been a leader in western land management and habitat improvement for more than three decades. The Mule Deer Foundation® is a key partner, and its mission of ensuring the conservation of mule deer, black-tailed deer and their habitat is as strong as ever. Habitat and migratory corridor disruption, increased wildfires, predation, and other factors, mean mule deer herds are struggling in many areas of the western landscape. With many customers trusting Remington's historic Core-Lokt™ product line and now the new Core-Lokt Tipped™ product line, the connection to support this organization is a perfect match to continue to supply customers with what they want for the field while partnering with an organization that supports a species in need.



Remington Ammunition fully supports the Sportsmen's Alliance® and their strong policy and legal defense strategy to protect the American Sportsman. Their dedication to future generations doesn't end with fights in legislatures for pro-sportsmans bills, they also stand strong to educate the American public on ballot box initiatives, public land degradation, supporting our Second Amendment rights and hunting heritage.

*“Remington
continues to step
up to support our
wildlife populations
and our hunting and
shooting heritages.”*

Jon Zinnel, Director of Conservation



CORE-LOKT TIPPED

LEVER GUN



CORE-LOKT TIPPED



Lever Gun enthusiasts now have the advantages associated with a polymer tip bullet. Core-Lokt Tipped Lever Gun is the newest extension to the Core-Lokt Tipped lineup. Engineered to maximize performance in Lever Action Rifles.



Innovative Design

The new flat tipped polymer bullet ensures safe functionality in tube-fed magazines.

Proven Performance

Features the reliable Core-Lokt jacket for consistent expansion and accuracy.

Enhanced Ballistics

Enjoy a higher ballistic coefficient and flatter trajectory compared to traditional soft point bullets.



Big Green Polymer Tip

Improves long range ballistics while also initiating controlled expansion for consistent terminal performance

Proven Core-Lokt Jacket

Tuned for optimal performance on big game

Match-Grade Accuracy

Precision drawn bullet jacket coupled with a sleek profile for maximum accuracy

Core-Lokt Tipped has paid its dues when it comes to earning the approval of outdoorsmen and women across the world. Living up to the legacy of The Deadliest Mushroom in the Woods®, Core-Lokt Tipped will continue to deliver greater accuracy, flatter trajectories, crushing terminal energy, and enhanced long range potential.

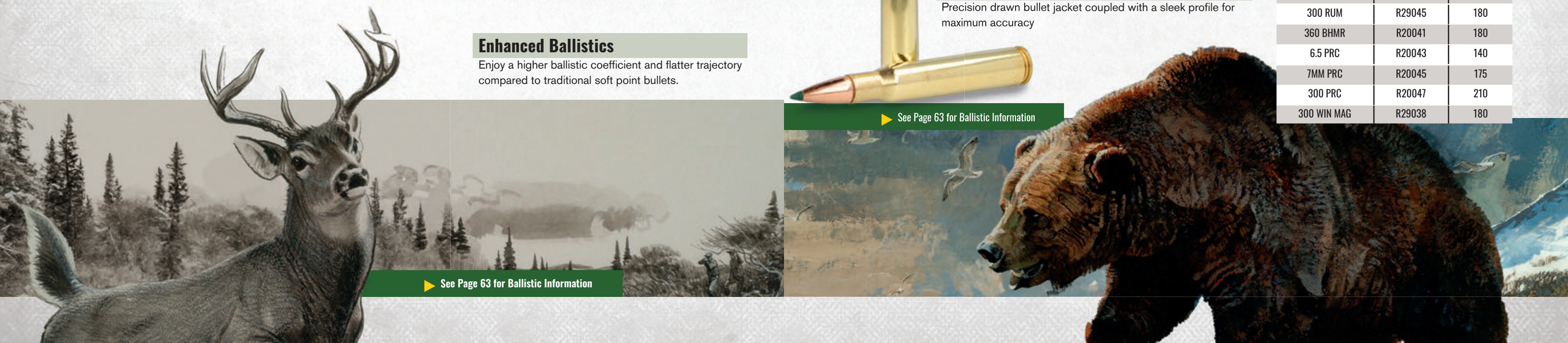


CARTRIDGE	ORDER	WT
30-30 WIN	R21428	150
32 WIN Special	R21435	170
35 REM	R21429	200
360 BHMR	R20041	180
444 Marlin	R21431	240
45-70 GOVT	R21430	300

CARTRIDGE	ORDER	WT
243 WIN	29015	95
6.5 CM	29017	129
270 WIN	29019	130
280 REM	29020	140
7MM REM MAG	29021	150
30-06 SPRG	29027	150
30-06 SPRG	29035	165
30-06 SPRG	29037	180
308 WIN	29039	150
308 WIN	29041	180
300 WSM	29043	150
308 WIN	29044	165
7MM-08 REM	R20039	140
300 RUM	R29045	180
360 BHMR	R20041	180
6.5 PRC	R20043	140
7MM PRC	R20045	175
300 PRC	R20047	210
300 WIN MAG	R29038	180

▶ See Page 63 for Ballistic Information

▶ See Page 63 for Ballistic Information



PREMIER LONG RANGE

FEATURING

SPEER IMPACT



Previously available only to handloaders, Speer's groundbreaking Impact bullet is loaded in a full line of big game ready factory ammunition, exclusively from Remington. Tough bonded construction penetrates deep on closer targets, while the patented Slipstream tip initiates expansion at velocities 200 fps lower than standard polymer tips.

The projectile's sleek construction and tightly-tapered hybrid ogive, combined with its boat-tail, ensures a high ballistic coefficient and all the advantages of match-grade accuracy. Combined with carefully selected brass, propellants and primers, Premier Long Range is ready to perform at any distance that you are.



CARTRIDGE	ORDER	WT
6.5 CM	R21341	140
270 WIN	R21342	150
7MM REM MAG	R21343	175
30-06 SPRG	R21344	172
308 WIN	R21345	172
300 WIN MAG	R21346	190
300 RUM	R21347	190
6.5MM PRC	R28828	140
7MM PRC	R28829	175
300 PRC	R28830	215

Slipstream Tip

High ballistic coefficient for flat trajectory and ultimate accuracy. Helps initiate expansion at a wide range of velocities

SPEER IMPACT Bullet

A boat-tail bullet with a rear adjusted center of gravity assists truer flight and long range accuracy.



PREMIER SCIROCCO

Remington brings you Premier Scirocco. This cartridge is outfitted with a Scirocco Bullet by Swift that delivers a high ballistic coefficient, flattest trajectory, and unsurpassed accuracy.

CARTRIDGE	ORDER	WT
243 WIN	29320	90
6.5 CM	29344	130
270 WIN	29322	130
7MM REM MAG	29316	150
7MM RUM	29335	150
30-06 SPRG	29318	150
30-06 SPRG	29328	180
300 WIN MAG	29330	180
300 WSM	29345	180
308 WIN	29332	165
300 RUM	27950	150
300 RUM	27936	180

▶ See Page 63 for Ballistic Information



PREMIER ACCUTIP-V

AccuTip-V bullets are designed to deliver match grade accuracy and maximum downrange energy on varmints and pests across any landscape.

CARTRIDGE	ORDER	WT	BULLET
17 FIREBALL	29165	20	ATV
17 REM	29162	20	ATV
204 RUGER	29218	32	ATV
204 RUGER	29220	40	ATV, BT
22 HORNET	29154	35	ATV
221 FIREBALL	29172	50	ATV, BT
222 REM	29174	50	ATV, BT
223 REM	29184	50	ATV, BT
223 REM	29192	55	ATV
22-250 REM	29186	50	ATV, BT
224 VALKYRIE	21202	60	ATV
243 WIN	29194	75	ATV, BT

▶ See Page 63 for Ballistic Information



PREMIER ACCUTIP

Premier AccuTip loaded in 450 Bushmaster is proven in the field of accuracy and knock down power. These factors, combined with Remington's signature AccuTip, make it a straight wall slayer that is legal for deer hunters across the United States.

- ▶ Patented PowerPort Tip™
- ▶ AccuTip Expansion
- ▶ Precisely Engineered Bushmaster Bullet



CARTRIDGE	ORDER	WT
450 BUSHMASTER	27943	260

▶ See Page 63 for Ballistic Information

Match Grade Components

Match Grade Components - Engineered with match grade bullets, this round stands out when a well-placed shot is crucial to a mission or a high stakes competition



Competition Standards

This ammunition is designed to meet the exacting standards necessary for a competition grade environment



▶ See Page 63 for Ballistic Information

PREMIER MATCH

When it comes to precision-grade accuracy, Premier Match Ammunition certainly separates itself from the competition. Built with only match-grade bullets, Premier Match undergoes unique loading practices to ensure top-tier performance down range. When the success of a mission or high stakes competition depends on one shot, make sure that powder is burning on a Premier Match round.

CARTRIDGE	ORDER	WT	BULLET
223 REM	27682	52	Hollow Point Match
223 REM	22106	62	Hollow Point Match
223 REM	27680	69	MatchKing OTM
223 REM	27686	77	MatchKing OTM
224 VALKYRIE	21201	90	MatchKing OTM
6MM CM	20001	107	MatchKing OTM
6.5 CM	27661	140	MatchKing OTM
6.5 GRENDL	21205	130	Berger OTM
6.5 PRC	27673	140	Berger OTM
260 REM	26852	140	Match OTM
6.8 REM SPC	27676	115	MatchKing OTM
300 BLK	21503	125	MatchKing OTM
308 WIN	21485	168	MatchKing OTM
308 WIN	21486	175	MatchKing OTM

LONG RANGE SHOOTING GEAR

with Dustin Sanchez



Scan to watch on Youtube.



▶ See Page 63 for Ballistic Information



THE STRAIGHT WALL CARTRIDGE THAT FLATTENS THEM ALL

360 Buckhammer, proudly produced by Remington Ammunition, has proven itself to be a trusted cartridge in the deer woods. Reviewed by countless publishers for its outstanding performance, 360 BHMR will continue to deliver the bone-busting energy, flat trajectories, and velocities that stand up to the old 30-30. Straight Up Better.

The ultimate straight wall cartridge that stands up to the old 30-30

Massive 358 Diameter bullets deliver deadly results on game



Optimized For Lever Action Rifles

Available in:



▶ See Page 63 for Ballistic Information



COPPER TIPPED TAKEDOWN



Premier CuT's monolithic copper alloy bullet gives high accuracy and terminal performance across all hunting ranges. Maximizing aerodynamic efficiency and weight retention with optimal penetration for the 2025 hunting season, Premier CuT will be offered in a comprehensive range of big game centerfire hunting calibers, featuring new caliber such as 6.5MM PRC and 7MM PRC.



CARTRIDGE	ORDER	WT
30-06 SPRG	R22343	150
308 WIN	R22344	150
300 WIN MAG	R22345	180
6.5MM PRC	R22335	130
6.5 CM	R22334	120
270 WIN	R22337	130
7MM-08 REM	R22339	140
7MM REM MAG	R22341	150
7MM PRC	R22343	150



Advanced Tipped Technology

Precision tip gives high ballistic coefficient and flat trajectories with instant expansion and energy transfer on impact

Tough Copper Alloy Bullet

Cuts through medium and large game with 95%+ weight retention. Optimized grooves maximize aerodynamic performance



▶ See Page 63 for Ballistic Information



LISTEN IN:

360 BUCKHAMMER. STRAIGHT UP BETTER.

Sit down with host Audrey Mayes, Head Engineer of Research and Development Jon Langenfeld, and Centerfire Product Director Kris Carson to talk about Remington's cartridge the 360 Buckhammer. We're talking about what it takes to create a new cartridge, 360 specific ballistics, and what the future holds for 360 Buckhammer.



Scan to watch on Spotify.



CORE-LOKT®

RULING THE WOODS FOR OVER 80 YEARS



▶ See Page 63 for Ballistic Information

The Deadliest Mushroom in the Woods®

Established in 1939, the Core-Lokt Bullet has harvested more game than any other bullet on the market and has earned the handle The Deadliest Mushroom in the Woods®. This is the original controlled expansion bullet. Core-Lokt's tapered copper jacket is locked to a lead core that delivers maximum weight retention and penetration on game.

Our longevity is shown by hunters across the world who continue to purchase our product because it is a bullet they trust to do the job right every trigger pull. Available in more calibers than any other load, our cartridge is sure to fit any deer camp, safari, or back country terrain across the world. The buck stops here.



Core-Lokt Soft Point Core-Lokt Pointed Soft Point



Proven Lethal

The original controlled expansion bullet

Unmatched Target Penetration

Busts through thick hide, fur, flesh, and bone

Consistent Expansion

2X expansion for consistent 'on game' results

Availability

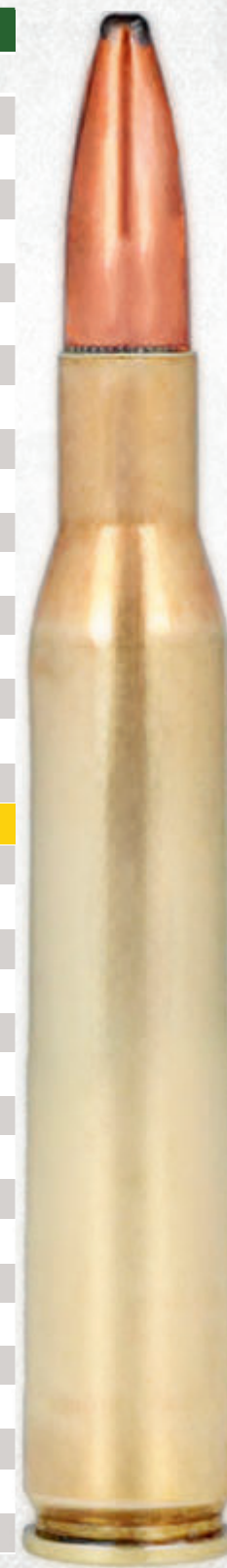
With an increasing list of calibers being added, the Core-Lokt line up covers the classic calibers to the newest modern offerings

Longevity

Backed by more than 80 years of continued hunter satisfaction



CARTRIDGE	ORDER	WT	BULLET
223 REM	22111	62	PSP
243 WIN	27802	100	PSP
250 SAVAGE	29077	100	PSP
25-06 REM	21507	100	PSP
25-06 REM	21515	120	PSP
25-20 WIN	28364	86	PSP
257 ROBERTS	28335	117	PSP
260 REM	21292	140	PSP
264 WIN MAG	29493	140	PSP
270 WIN	21325	100	PSP
270 WIN	27808	130	PSP
270 WIN	27810	150	SP
270 WSM	28940	130	PSP
280 REM	28313	140	PSP
280 REM	29069	150	PSP
280 REM	28417	165	SP
30 CARBINE	28322	110	SP
300 BLK	29485	150	PSP
NEW! 300 HAM'R	R21351	125	PSP
300 REM SAUM	27954	165	PSP
300 RUM	27641	180	PSP
300 SAVAGE	21465	150	PSP
300 WBY MAG	29279	180	PSP
300 WIN MAG	29495	150	PSP
300 WIN MAG	29497	180	PSP
300 WSM	29489	150	PSP
30-06 SPRG	21401	125	PSP
30-06 SPRG	27826	150	PSP
30-06 SPRG	21415	165	PSP
30-06 SPRG	27828	180	PSP
30-40 KRAG	28345	180	PSP
30-06 SPRG	21407	180	SP
30-06 SPRG	27830	220	SP
303 BRITISH	21471	180	SP
30-30 WIN	21395	170	HP
30-30 WIN	27818	150	SP



CARTRIDGE	ORDER	WT	BULLET
30-30 WIN	27644	125	SP
30-30 WIN	27820	170	SP
308 MARLIN EXPRESS	27848	150	PSP
308 WIN	27842	150	PSP
308 WIN	21479	180	PSP
338 RUM	27942	250	PSP
308 WIN	27844	180	SP
32 WIN SPECIAL	21489	170	SP
338 WIN MAG	22189	225	PSP
338 WIN MAG	22191	250	PSP
35 REM	21491	150	PSP
35 WHELEN	21495	200	PSP
35 REM	27852	200	SP
450 BUSHMASTER	27941	260	PSP
350 LEGEND	20012	180	SP
360 BHMR	R27742	180	SP
360 BHMR	R27743	200	SP
NEW! 400 LEGEND	R21307	210	PSP
444 MARLIN	29475	240	SP
6.5 CM	27657	140	PSP
45-70 GOVT	29473	405	SP
45-70 GOVT (RP)	21459	405	SP
6.5x55 SWEDISH	29140	140	PSP
6MM CM	29049	100	PSP
6MM REM	29051	100	PSP
7x64 BRENEKE	29130	140	PSP
7.62x39	29125	125	PSP
7MM MAUSER (7x57)	29031	140	PSP
7MM REM MAG	28821	140	PSP
7MM REM MAG	29487	150	PSP
7MM REM MAG	27814	175	PSP
7MM REM SA UM	27874	150	PSP
7MM RUM	27759	150	PSP
7MM-08 REM	21337	140	PSP

Remington.com



LEAD FREE BULLET

CORE-LOKT COPPER

The performance you know and love from Core-Lokt, but in a lead-free bullet. Engineered with high strength copper alloy, Remington's original controlled expansion bullet continues to make waves in the outdoor industry every season and every harvest.

CARTRIDGE	ORDER	WT
243 WIN	R27856	85
270 WIN	R27855	130
300 BLK	R27857	120
30-06 SPRG	R27853	150
300 WIN MAG	R27858	180
308 WIN	R27854	150
360 BHMR	R20061	160

▶ See Page 63 for Ballistic Information



CORE-LOKT MANAGED RECOIL

For decades, hunters have sought out a round that boasts lower recoil but with the same on-game performance. Previous solutions to this problem only compromised bullet expansion, making the payload less effective. Remington Ammunition provides the solution to this problem with a specially engineered bullet. This round is designed for lower velocity, ensuring 2X expansion with over 75% weight retention within 50 to 200 yards. The result is a high performance, Remington quality round that delivers half the recoil than you expect.

CARTRIDGE	ORDER NO.	WT
30-30 WIN	27644	125

▶ See Page 63 for Ballistic Information



SUBSONIC RIFLE

Remington Subsonic is engineered to optimize performance when paired with a suppressor. Assembled with our Premier loading components under meticulous quality assurance processes, this load delivers constant subsonic velocities to prevent supersonic cracks.

CARTRIDGE	ORDER	WT
300 BLK	28430	220

▶ See Page 63 for Ballistic Information



▶ See Page 63 for Ballistic Information

UMC RIFLE

With over 100 years of excellence, Remington's UMC products have delivered exceptionally performing cartridges for the high-volume shooter. Available in 10 different calibers and 3 bullet types, UMC Rifle has got you covered no matter your situation. The best part? Loaded right here in the USA by hardworking Americans.

CARTRIDGE	ORDER	WT	BULLET
17 FIREBALL	28472	25	JHP
223 REM	23711	55	FMJ
223 REM	23748	45	JHP
223 REM	23812	50	JHP
223 REM	23906	45	JHP
223 REM	23908	50	JHP
223 REM	23966	55	FMJ
223 REM	23775	45	JHP
223 REM	23683	55	FMJ
223 REM	23897	55	FMJ
223 REM	23895	55	FMJ
22-250 REM	23750	45	JHP
22-250 REM	23769	45	JHP
22-250 REM	23813	JHP	JHP
22-250 REM	23783	50	JHP
224 VALKYRIE	21203	75	FMJ
6.8 REM SPC	24035	115	FMJ
30 CARBINE	23712	110	FMJ
300 BLK	21421	120	OTFB
300 BLK	26854	150	FMJ
300 BLK	21422	220	OTFB
300 BLK	26855	150	FMJ
300 BLK	24026	220	OTFB
300 BLK	20107	150	FMJ
300 BLK	20109	220	OTFB
30-06 SPRG	27622	150	FMJ
308 WIN	R23971	150	FMJ
308 WIN	23715	150	FMJ
303 BRITISH	23701	174	FMJ
450 BUSHMASTER	23661	260	FMJ

Premier Components

Outfitted with high-quality brass that can be reloaded with ease by a standard press, making your investment in our ammo even more worthwhile



HIGH PERFORMANCE RIFLE

Remington Ammunition's High Performance Rifle product line provides the shooter with the capability to match any setting they find themselves in. On the range, on the competition line, or in the woods, High Performance Rifle is sure to deliver an innovative rifle round that is proudly made here at Remington.

CARTRIDGE	ORDER	WT	BULLET
17 REM	28460	25	HP
22 HORNET	28376	45	PSP
220 SWIFT	21297	50	PSP
222 REM	21303	50	PSP
223 REM	28399	55	PSP
22-250 REM	21311	55	PSP
243 WIN	27800	80	PSP
308 WIN	R21473	180	PSP
32-20 WIN	28410	100	Lead
35 WHELEN	21499	250	PSP
375 H&H MAG	29097	270	SP
375 RUM	29340	270	SP
45-70 GOV'T	21463	300	SIHP

▶ See Page 63 for Ballistic Information

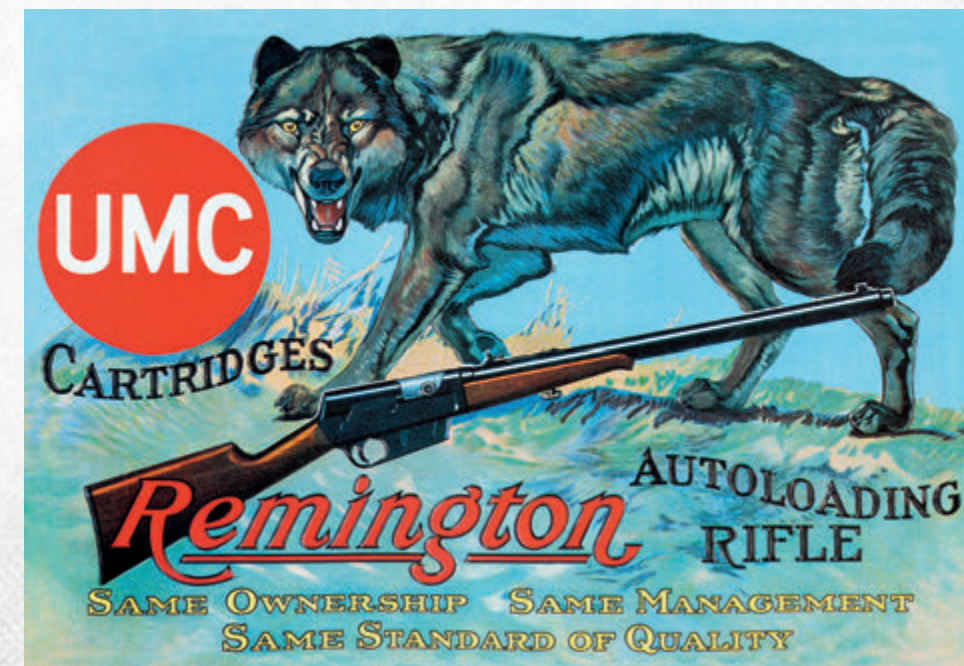


ULTIMATE DEFENSE RIFLE

Ultimate Defense™ Rifle Bonded ammunition features Core-Lokt Ultra Bonded bullets comprised of a lead core that's metallurgically adhered to a progressively tapered jacket. It is the world-class performance you've come to expect from Remington® Ultimate Defense ammunition.

CARTRIDGE	ORDER	WT
223 REM	22107	62

▶ See Page 63 for Ballistic Information



PREMIER ACCUTIP MZ

MUZZLELOADING SABOT BULLETS



Exclusively made by Remington Ammunition, Premier AccuTip MZ Sabot bullets are taking the muzzleloader scene by storm. The PowerPort Tip ensures a remarkable combination of high ballistic coefficients and flat trajectories. Our engineers designed this bullet with the big game hunter in mind and our 250 Grain bullet packs a punch on any game. Primer not included.



Cartridge	Order	WT	Bullet Type
50 Cal	30610	260	ATFB

Powerport Tip

Accurate, precise, consistent accuracy. Same proven technology as Remington's popular Premier® AccuTip Slug

High Strength Bonded Jacket

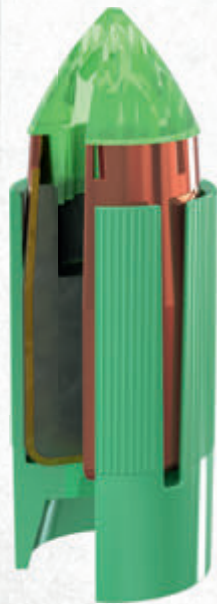
Made from hard-hitting cartridge brass, bonded projectile penetrates deep, with 97%+ weight retention and over 100% expansion at 200 yards

Easy Load Sabot

Easily seat your projectile, even with a fouled barrel. Ideal for quick follow up shots

Tested and Proven

Deadly accurate with all leading muzzleloading propellants and black powder substitutes



▶ See Page 63 for Ballistic Information

Remington.com

RELOADING COMPONENTS



BULLETS

Engineered for accuracy, weight retention, and penetration at all distances, Remington is proud to provide top-notch quality bullets for handloading.



Want to learn more?

Scan the QR Code to go our website.



RIFLE BRASS

U.S. manufacturing at its finest, Remington is proud to supply handloaders with an assortment of first-quality brass available in popular hunting and shooting cartridges.



Want to learn more?

Scan the QR Code to go our website.



CENTERFIRE PRIMERS

Remington's Kleanbore primers are the ultimate choice when it comes to handloading centerfire cartridges. Their reliable ignition under extreme temperatures and across a wide range of powders make them the easy choice for the avid reloader.

ORDER	DESCRIPTION
22600	1 1/2 Small Pistol
22604	2 1/2 Large Pistol
22626	5 1/2 Small Pistol
22606	6 1/2 Small Rifle
22628	7 1/2 Small Rifle Bench Rest
22608	9 1/2 Large Rifle
22622	9 1/2 M, Magnum Rifle



ULTIMATE MUZZLELOADER

For use with the Remington Ultimate Muzzleloader ignition system, these primed shells are the driving force behind the 300-yard muzzleloader. Our first-quality, Remington brass is manufactured to the highest industry standards and comes packed in heavy duty laminated plastic pouches. The flash channel stays clean and ready for the next load and there's no need to remove the breech plug for cleanup.



Want to learn more?

Scan the QR Code to go our website.



Remington has been in the ammunition business for over a century. Our American produced cartridges have won world wars, helped hunters put an unfathomable amount of meat on the table for their families, and won the trust of world champion shooters. When it comes to reloading, you can count on Remington to deliver the tools to do it right. Bullets, first quality brass, or Kleanbore primers, don't settle for anything less.

Remington.com

NEW

RIFLE

SHOTGHELL

HANDGUN

RIMFIRE

SPECS



SHOTSHELL

NEW ROYAL FLUSH	26
NEW DUCK CLUB	27
WINGMASTER HD	28
HYPERSONIC STEEL	28
PREMIER BISMUTH	28
NITRO-STEEL DUPLEX	29
NITRO-STEEL	30
PREMIER TSS	31
PREMIER MAGNUM TURKEY	32
NITRO TURKEY	32
EXPRESS XLR	33
NITRO PIGEON	34
PHEASANT LOADS	34
NITRO MAGNUM EXTENDED RANGE BUFFERED	34
GAME LOADS	34
HEAVY DOVE LOADS	35
PREMIER ACCUTIP SABOT SLUG	36
SLUGGER RIFLED SLUG	37
SLUGGER HIGH VELOCITY	37
SLUGGER MANAGED RECOIL	37
EXPRESS BUCKSHOT & EXPRESS MAGNUM BUCKSHOT	37
EXPRESS BUCKSHOT VALUE PACK	38
RELOADING COMPONENTS	38
PREMIER STS	39
PREMIER NITRO SPORTING CLAYS	40
PREMIER NITRO 27	40
LOW DECIBEL	42
PETERS PREMIER	42
GUN CLUB TARGET LOAD	42
GUN CLUB CURE	43
ULTIMATE DEFENSE BUCKSHOT	44

“That’s part of shot science, there’s no better way to count patterns than to shoot paper and then go look at them.”

– Jimmy Lawrence, Ballistics Engineer



Scan to hear the episode:
Shot Science



SHOTSHELL



A Love of Shooting Starts at Home

Since 1978, Remington's Gun Club has been cultivating a community.

Remington has a long-standing history of cultivating the love of shooting. The doors opened to the facility in 1978, which at the time had only a few trap fields available to employees. Used for testing products and instilling knowledge in the individuals that load ammunition, the Gun Club was enjoyed by Remington factory workers only for several years. However, when the Remington Gun Club heard the call of the community, they opened their doors to the public.

"The Remington Gun Club is more than just a place to shoot, it's a place where memories are made." – Jon Langenfeld, Head of Research and Development Engineering

As stewards of shotgun shooting sports, the Gun Club saw an opportunity to cultivate the love of breaking clays within the community. Starting with its home base, Lonoke, Arkansas, Remington was home to many young athletes. When word had gotten around that the Remington Gun Club was the pinnacle of Arkansas clay shooting, with that came college level shooters and eventually legends of the sport. Interest began to grow, and so did the Club, increasing its count of trap fields from three to nine and adding four skeet fields. In 2021, a 13-station sporting clays course was introduced to the Remington Gun Club, and shortly after, a 5-stand field was implemented to further the club's place as the premier shotgun shooting destination.

"The Remington Gun Club Sporting Clays course is one of a kind. Set in the woods adjacent to the Remington factory, it gives challenging targets for experienced shooters, but is an excellent course for the novice to learn and hone their skills." – Ronnie Evans, Shotshell Product Manager

The Remington Gun Club has housed and hosted a number of big-name clay breakers, to include Hall of Fame Inductees; Dr. Doyne Williams, James Kiddy, Brooks Jackson, and Bronson Castleberry who once acted as the manager of the club. Today, the club organizes college and high school level shoots in all disciplines of shotgun sports, is home to the Shoot to Cure Sporting Clays Fundraiser that benefits Arkansas Children's Hospital and is the practice field for World Doubles Trap Shooting Champion, Logan Henry.

"Growing up shooting at the Remington Gun Club has been a

privilege. I still fondly remember my first state championship trophy at my first Arkansas state trap shoot at fourteen years old. It's amazing to have one beautiful facility that tends to all shooter's needs from trap and skeet to sporting clays. Remington Gun Club has it all." – Logan Henry, 2024 Grand American Doubles World Champion

Reaching outward, the staff of the Remington Gun Club has served groups such as Trap Mechanics, Target Setters, and other key roles that enable the hosting of the Grand American National Competition and state level shoots. The club's commitment to inclusivity in the world of shooting sports has made it a welcoming space for individuals from all experience levels to explore their passion for shooting. The instructors are always on hand to provide guidance and coaching to help promote the future of the sport.

"The Remington Gun Club is such a big of part shotgun shooting sports in the state of Arkansas. I started my shooting career here, so being able to keep the tradition alive is a great opportunity." – Justin Hefner, Remington Gun Club Supervisor

Remington Gun Club stands as a testament to the enduring legacy of shooting sports.

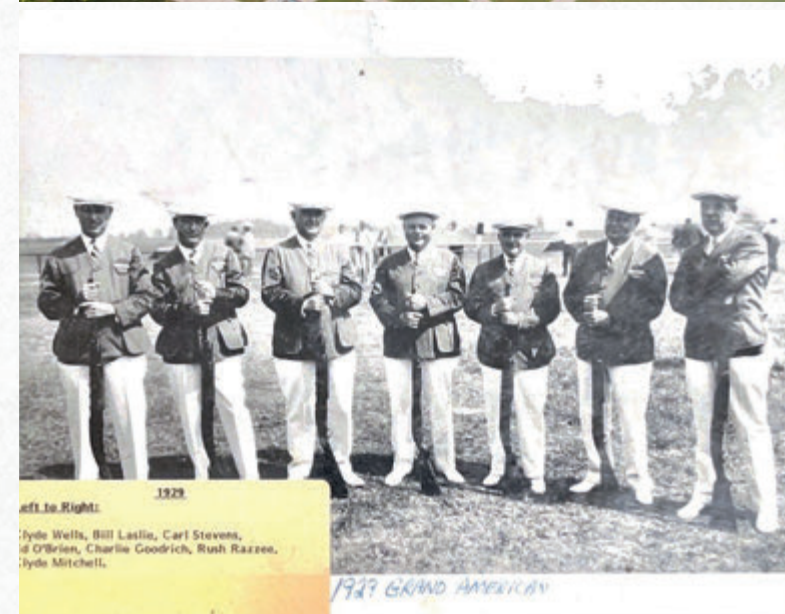
Its rich heritage, notable events, and the contributions of famous shooters have made it an institution of great historical and cultural significance. As we celebrate the history of Remington Gun Club, we invite you to come and visit this iconic establishment, where you can immerse yourself in the world of shooting sports and be a part of history. Discover the traditions, experience the joy that is shotgun shooting sports, and join us in preserving the legacy of Remington Gun Club as we continue to champion the art of shooting for generations to come.

"The Remington Gun Club is really the public face of the factory to the community. Since the ammunition factory is not open to the public, the Remington Gun Club is often all many may see. You only get one chance to make an impression on visitors. We strive to provide a memorable and comfortable shooting destination that represents the Remington brand and the Remington community." – Kris Carson, Remington Gun Club Manager



"The Remington Gun Club is such a big of part of shotgun shooting sports in the state of Arkansas. I started my shooting career here so being able to keep the tradition alive is a great opportunity."

Justin Hefner, Remington Gun Club Supervisor



ROYAL FLUSH



Royal Flush is the ultimate shotshell load that is suited for all game birds found in the timber or an upland field. Available in a variety of different lengths, payloads, and shot sizes, Royal Flush is sure to sweep the table against any upland game you're after.

Maximum Impact

Magnum Grade payload to ensure knock down power

All Game Birds

No matter what you flush in the field, this shotshell takes the pot

Variety

Available in 12ga and 20ga loads in either 4,5, or 6 shot

ORDER	GAUGE	LENGTH	FPS	OZ SHOT	SHOT
R20556	12	2 3/4	1550	1 1/4	4
R20557	12	2 3/4	1550	1 1/4	5
R20558	12	2 3/4	1550	1 1/4	6
R20559	20	3	1425	1	4
R20560	20	3	1425	1	5
R20561	20	3	1425	1	6



DUCK CLUB® STEEL



Modeled after our iconic Sportsman Steel, this shotshell is an economical and versatile shotshell designed for all waterfowl occasions. Available in an assortment of different lengths, payloads, and shot size, Duck Club Steel has you covered no matter the occasion.

Affordable

Designed for those seeking an economical steel load that has serious velocity

High Velocity Steel

High velocity steel that knocks down waterfowl even at longer ranges

A Variety of Shot Sizes

Available in various shot sizes and payloads that are designed to fit any waterfowl occasion. Chambered in both 12ga and 20ga

ORDER	GAUGE	SHELL LENGTH	VELOCITY	OZ. OF SHOT	SHOT SIZE
R26781	12	3	1400	1 1/4	BB
R26782	12	3	1400	1 1/4	2
R26783	12	3	1400	1 1/4	3
R26785	12	3	1400	1 1/4	4
R26787	20	3	1300	1	3
R26786	20	3	1300	1	4



▶ See Page 83 for Ballistic Information

▶ See Page 83 for Ballistic Information



PREMIER BISMUTH

Out-performing steel, Premier® Bismuth's shot flies farther with more retained energy, giving you deadly performance at greater distances. Premier Bismuth's density makes smaller shot sizes viable, resulting in more pellets per payload, more shot on target, and more mornings hitting your limit. From the rolling prairies of Kansas to the flooded timber of Arkansas, Premier Bismuth is equally effective on either upland game or waterfowl, making this your shotshell for any season.



ORDER	GAUGE	LENGTH	FPS	OZ SHOT	SHOT
R20500	12	3	1400	1 3/8	2
R20501	12	3	1400	1 3/8	5
R20503	12	2 3/4	1400	1 1/4	2
R20505	12	2 3/4	1400	1 1/4	5
R20507	20	3	1400	1 1/8	2
R20508	20	3	1400	1 1/8	5
R20509	20	2 3/4	1300	1	5
R20514	410	3	1200	5/8	4

▶ See Page 83 for Ballistic Information

NITRO-STEEL DUPLEX™

HIGH VELOCITY STEEL BLEND



Remington's Duplex shells are back and ready for your duck blind. This load is outfitted with two different sizes of steel shot for ultimate performance at all ranges. Blended, high velocity magnum steel payloads give dense patterns with the smaller shot size close up, whereas the larger shot hits hard at distances while maintaining energy over its flight path. Available in four shot combinations with more load options coming soon.

ORDER	GAUGE	LENGTH	FPS	OZ SHOT	SHOT
R20321	12	3	1450	1 1/4	2 x 4
R20049	12	3	1450	1 1/4	2 x 4
R20051	12	3	1450	1 1/4	2 x 4
R26643	12	3	1450	1 1/4	2 x 6
R26645	12	3	1450	1 1/4	BB x 4
R20323	12	3	1450	1 1/4	BB x 2
R20327	20	3	1400	1	2 x 4
R20329	20	3	1400	1	2 x 6
R20331	20	3	1400	1	4 x 6

Duplex Shot Load

Two variations of shot sizes double stacked for deadly patterns at all ranges

Nitro Velocity

Maximum velocity that delivers magnum blended payloads to reach distant birds

Performance Wad

Our waterfowl wads are designed to cushion the shot through delivery and will perform exceptionally across various choke tubes



WINGMASTER HD

The one-stop shop in duck and goose high-density shotshell rounds is here. Testing proves Wingmaster HD delivers the best combination of pellet energy and pattern density resulting in high pattern energy on target. At 12 g/cc, our tungsten blend is 6% denser than lead and nearly 50% denser than steel. Expect deeper penetration and more pellets on target. If you want the most balanced tungsten waterfowl shotshell on the market, Wingmaster HD delivers.

ORDER	GAUGE	LENGTH	FPS	OZ SHOT	SHOT
20693	12	2 3/4	1325	1 1/4	4
20695	12	2 3/4	1325	1 1/4	6
20871	12	3	1450	1 1/4	2
20873	12	3	1450	1 1/4	4
20875	12	3	1450	1 1/4	6
20685	12	3	1450	1 3/8	2
20687	12	3	1450	1 3/8	4
20689	12	3	1450	1 3/8	6
20903	12	3	1300	1 1/2	2
20905	12	3	1300	1 1/2	4
20655	12	3 1/2	1300	1 3/4	BB
20657	12	3 1/2	1300	1 3/4	2
20659	12	3 1/2	1300	1 3/4	4
20763	20	3	1300	1 1/8	4

▶ See Page 83 for Ballistic Information



HYPERSONIC STEEL

Most ducks are missed from behind. The good news, Remington's HyperSonic Steel's vicious velocity compensates by a full body length at 40 yards — on a duck flying at average speed. The result: more pellets in the head and neck for cleaner kills and fewer misses — all without changing the way you shoot. HyperSonic Steel. Taking lethality to deadlier new heights.

WATCH. LISTEN. Scan to hear the episode.

ORDER	GAUGE	LENGTH	FPS	OZ SHOT	SHOT
26741	12	3	1700	1 1/8	BB
26743	12	3	1700	1 1/8	2
26745	12	3	1700	1 1/8	4
26769	12	3	1700	1 1/4	BB
26771	12	3	1700	1 1/4	1
26775	12	3	1700	1 1/4	2
26776	12	3	1700	1 1/4	3
26777	12	3	1700	1 1/4	4
26793	12	3 1/2	1700	1 3/8	BB
26795	12	3 1/2	1700	1 3/8	2
26799	12	3 1/2	1700	1 3/8	4
26823	20	3	1600	7/8	2
26825	20	3	1600	7/8	4





NITRO-STEEL

MORE STEEL TO THE BIRDS – MORE BIRDS TO THE GROUND. The steel that serious waterfowlers depend on. High-quality, zinc-plated, spherical pellets fly straight, delivering true patterns at close and long-range. Plus, Nitro-Steel is fully compatible with aftermarket ported and wad-stripping chokes. It's a proprietary blend of components that produces more dead birds year after year.

ORDER	GAUGE	LENGTH	FPS	OZ SHOT	SHOT	ORDER	GAUGE	LENGTH	FPS	OZ SHOT	SHOT
20853	10	3 1/2	1450	1 1/2	2	20856	12	3	1300	1 3/8	BB
20803	12	2 3/4	1390	1 1/8	4	20860	12	3	1300	1 3/8	2
20650	12	2 3/4	1275	1 1/4	BB	20864	12	3	1300	1 3/8	4
20654	12	2 3/4	1275	1 1/4	2	20837	12	3 1/2	1500	1 1/2	BB
20658	12	2 3/4	1275	1 1/4	4	20839	12	3 1/2	1500	1 1/2	2
20794	12	3	1450	1 1/4	BB	20941	16	2 3/4	1300	15/16	2
20796	12	3	1450	1 1/4	1	20943	16	2 3/4	1300	15/16	4
20798	12	3	1450	1 1/4	2	20769	20	3	1400	1	4
20800	12	3	1450	1 1/4	3						
20802	12	3	1450	1 1/4	4						
20852	12	3	1300	1 3/8	T						

▶ See Page 83 for Ballistic Information

A Family Affair: Alyssa Hall's Unforgettable Turkey Hunt

AKA Aly from Alabama

A few years ago, my husband and I went on one of the most memorable turkey hunts of my life, made even more special by the presence of our two-year-old daughter. I grabbed my shotgun, loaded my pockets full of Remington shotgun shells, and said a prayer before we hit the road.

As soon as we arrived at the planted peanut fields, my heart skipped a beat. Right there, in front of us, were two big gobblers, surrounded by a group of hens, putting on an impressive show. We pulled up to the entrance of our hunting lease, grabbed my gear, and huddled over an aerial map on my phone. My husband, always calm and collected when it came to setting up the perfect hunt, talked me through a game plan - like he has since the very first turkey hunt that he ever took me on. He mapped out where the turkeys were likely headed, and we agreed on the best spot for me to set up.

With the plan in place, he dropped me off, wished me luck, and sent me on my way. As I walked through the familiar brush, my heart was pounding, a mix of nerves and excitement coursing through me. I could still hear the gobblers echoing from the field, and I knew I had to stay focused, patient and calm. It didn't take long for the action to unfold. Within just fifteen minutes of setting up, I went from watching those gobblers strutting in the field to having one of them right in my lap. The thrill of those moments is something I'll never forget... as every hunter knows. I steadied my shotgun, took a deep breath, and with a perfect shot, my turkey hunt was over. I walked up to that beautiful bird, and as I held 18 beautiful feathers from its fan in my hands, the sense of accomplishment and gratitude washed over me. But what made that moment even more incredible was sharing it with my precious daughter.

As I admired the bird, my husband and daughter came up behind me, and my little girl's eyes lit up as she took it all in. There's something so special about sharing the outdoors with your children, about showing them the beauty of nature and the thrill of the hunt. The look on her face was almost nostalgic to me, as I had a similar expression on my first turkey hunt at 20-years-old... except I was so much later to the game than her.



YOUR DEADLIEST SPRING YET



Send more big toms to the oven with our Premier TSS Turkey Loads. Our ultra-dense Tungsten Super Shot blends deliver increased lethal range, denser patterns, and more knockdown power. A density of 18 g/cc makes a smaller shot size viable over what you'd choose in lead, with an energy and velocity increase to boot. Every load is tuned for the tightest, most consistent patterns possible. Get ready for the deadliest turkey season of your life.

Ultra-Dense Payloads

Our payloads are outfitted with high grade tungsten packed at a density of 18g/cc

ORDER	GAUGE	LENGTH	FPS	OZ SHOT	SHOT
28043	12	3	1200	1 3/4	7
28045	12	3	1200	1 3/4	9
28063	20	3	1100	1 1/2	7
28065	20	3	1100	1 1/2	9
28069	410	3	1100	13/16	9

▶ See page 107 for ballistic information

Tight patterns

The ballistics of this shell are finely tuned by our engineers to ensure consistent tight patterns, even at long distances.



WATCH. LISTEN.

Scan to hear the episode.



LET'S TALK TURKEY

With host, Audrey Mayes, our resident Tom Slayer, Director of Centerfire Products Kris Carson, the shotshell expert himself, Ronnie Evans, and the guy who has never gotten his turkey but won't give up hope, Remington Gun Club supervisor, Justin Hefner. We're touching on all everything Turkey; from conservation to grand slams, and camo to ammo. If gobbles in the woods are what keep you up at night, you are not going to want to miss this one.



WATCH. LISTEN.

Scan to hear the episode.



NITRO TURKEY

Extra-hard lead shot meets next-level patterning at a value price. Available in 12ga and 20ga options, this gives every hunter an opportunity to

find the best shot size and payload that tunes best with their turkey gun.

ORDER	GAUGE	LENGTH	FPS	OZ SHOT	SHOT
26690	12	2 3/4	1260	1 1/2	4
26688	12	2 3/4	1260	1 1/2	5
26693	12	3	1210	1 7/8	4
26695	12	3	1210	1 7/8	5
26673	12	3	1210	1 7/8	6
26697	12	3	1210	1 7/8	6
26710	12	3 1/2	1300	2	4
26710	12	3 1/2	1300	2	4
26708	12	3 1/2	1300	2	5
26712	12	3 1/2	1300	2	6
26711	12	3 1/2	1300	2	6

▶ See Page 83 for Ballistic Information

EXPRESS XLR

EXTRA LONG RANGE

EXTRA LONG RANGE.
FASTER. FARTHER.



Decades of hunters have come to know and trust Express XLR to knock down upland game around the world. The time-proven excellence of the Express XLR (Extra Long Range) line offers 12ga to 410 Bore and shot sizes ranging from 2 all the way down to 7 1/2, for everything from pheasant and quail to rabbits and squirrels.

ORDER	GAUGE	LENGTH	FPS	OZ SHOT	SHOT
20143	12	2 3/4	1330	1 1/4	2
20145	12	2 3/4	1330	1 1/4	4
20147	12	2 3/4	1330	1 1/4	5
20149	12	2 3/4	1330	1 1/4	6
20151	12	2 3/4	1330	1 1/4	7 1/2
20167	12	2 3/4	1450	1 1/8	5
20168	12	2 3/4	1450	1 1/8	6
20169	12	2 3/4	1450	1 1/8	7 1/2
28003	16	2 3/4	1295	1 1/8	4
28007	16	2 3/4	1295	1 1/8	6
28009	16	2 3/4	1295	1 1/8	7 1/2
20333	20	2 3/4	1220	1	4
20335	20	2 3/4	1220	1	5
20337	20	2 3/4	1220	1	6
20339	20	2 3/4	1220	1	7 1/2
20181	20	2 3/4	1350	7/8	6
20183	20	2 3/4	1350	7/8	7 1/2
28047	28	2 3/4	1295	3/4	6
28049	28	2 3/4	1295	3/4	7 1/2
20743	410	2 1/2	1250	1/2	4
20745	410	2 1/2	1250	1/2	6
20747	410	2 1/2	1250	1/2	7 1/2
20771	410	3	1135	11/16	4
20775	410	3	1135	11/16	6
20777	410	3	1135	11/16	7 1/2

▶ See Page 83 for Ballistic Information

PREMIER MAGNUM TURKEY

For avid turkey hunters, speed kills. Delivering hard-hitting power to bag any big tom, Premier Magnum Turkey and Premier Magnum Turkey High Velocity loads are loaded with our Power Piston wad and magnum-grade shot for dense patterns and deep penetration, equaling more floppin' toms.



PREMIER MAGNUM TURKEY					
ORDER	GAUGE	LENGTH	FPS	OZ SHOT	SHOT
24395	10	3 1/2	1210	2 1/2	4
26801	12	3	1175	2	4
26803	12	3	1175	2	5
26805	12	3	1175	2	6
26833	12	3 1/2	1150	2 1/2	4
26859	20	3	1185	1 1/2	6

PREMIER MAGNUM TURKEY HIGH VELOCITY					
ORDER	GAUGE	LENGTH	FPS	OZ SHOT	SHOT
28029	12	3	1300	1 3/4	4
28031	12	3	1300	1 3/4	5
28039	12	3 1/2	1300	2	4
28041	12	3 1/2	1300	2	5
20119	20	3	1300	1 1/8	5

▶ See Page 83 for Ballistic Information

Upland and Small Game Getter

Wide range of gauge, payload and shot size offerings for any small or flying game

High Base Head

High quality high brass cap for reliability and smooth function in break open, single shot or semi-auto actions

Extra Long Range

High velocity load options for tight, dependable patterns near to far



NEW

RIFLE

SHOTSHELL

HANDGUN

RIMFIRE

SPECS



PHEASANT LOADS

The high velocity and long-range performance of Remington Pheasant Loads are just right for any rooster, quail, chukar, grouse, or even woodcock situation. Standard high-brass payloads include 12ga, 16ga, and 20ga.

ORDER	GAUGE	LENGTH	FPS	OZ SHOT	SHOT
20046	12	2 3/4	1330	1 1/4	4
20024	12	2 3/4	1330	1 1/4	5
20048	12	2 3/4	1330	1 1/4	6
20050	12	2 3/4	1330	1 1/4	7 1/2
20054	16	2 3/4	1295	1 1/8	6
20058	20	2 3/4	1220	1	4
20018	20	2 3/4	1220	1	5
20060	20	2 3/4	1220	1	6

▶ See Page 83 for Ballistic Information



NITRO PIGEON

Remington Nitro Pigeon loads are engineered to accurately take down fast-rising pigeons, doves, and upland game. Maximizing your shell's pattern, velocity and consistency, Nitro Pigeon's premier quality ensures fewer birds are lost.

ORDER	GAUGE	LENGTH	FPS	OZ SHOT	SHOT
28681	12	2 3/4	1300	1 1/4	7 1/2
28682	12	2 3/4	1300	1 1/4	8

▶ See Page 83 for Ballistic Information



NITRO MAGNUM EXTENDED RANGE BUFFERED

Equally excellent for bagging upland feathers and fur. Heavy payloads of magnum-grade shot are packed with polymer buffering and enclosed in our Power Piston one-piece wad to provide dense, even patterns and uniform shot strings.

ORDER	GAUGE	LENGTH	FPS	OZ SHOT	SHOT
26676	12	2 3/4	1260	1 1/2	2
26678	12	2 3/4	1260	1 1/2	4
26674	12	3	1280	1 5/8	4
20376	12	3	1280	1 5/8	6
26682	12	3	1210	1 7/8	2
26684	12	3	1210	1 7/8	4
26685	12	3	1210	1 7/8	6
20664	20	2 3/4	1175	1 1/8	4
20666	20	2 3/4	1175	1 1/8	6
20672	20	3	1185	1 1/4	4
20674	20	3	1185	1 1/4	6

▶ See Page 83 for Ballistic Information



GAME LOADS

Budget-stretching shotshells for a wide variety of hunting. Upland or small game, these are quality shells for any outing. Available in 12ga, 16ga, 20ga and 410 Bore.

ORDER	GAUGE	LENGTH	FPS	OZ SHOT	SHOT
20028	12	2 3/4	1290	1	6
20030	12	2 3/4	1290	1	7 1/2
20032	12	2 3/4	1290	1	8
20034	16	2 3/4	1200	1	6
20036	16	2 3/4	1200	1	7 1/2
20038	16	2 3/4	1200	1	8
20040	20	2 3/4	1225	7/8	6
20042	20	2 3/4	1225	7/8	7 1/2
20044	20	2 3/4	1225	7/8	8
20014	410	2 1/2	1200	1/2	6

▶ See Page 83 for Ballistic Information

The Return of Fall: Wing Shooting, Friends, & Traditions

By Andy Kloss, Marketing Specialist



Opening in early September, dove hunting allows outdoorsmen and women to get back into the field right at the beginning of fall and provides an opportunity to harvest game; and show off any clay shooting abilities you may have built up. However, dove hunting is not just about bagging birds. The best part is that it is exceptionally socially oriented and is best done with a group of friends. It is the perfect excuse to create some unforgettable memories and stories that will last a lifetime.

After having an incredible 2023 season, I made sure to allot a weekend with my hunting buddies to try to recreate the hunt from the year prior. The first weekend in September I organized a hunting excursion that included 3 college friends and me to take part at our old college stomping grounds in Indiana. Playing it smart, we decided a scouting trip was crucial. My pal, Kobe, took up the task with much excitement and ventured off on this mission to put eyes on birds. On his way home from scouting, he eagerly spoke to me about the birds he saw and where the hotspots were on property. Speaking from experience, the work you put in to gain intel and find hot spots can pay out big when it comes time to burn powder. Safe to say, the news he came back with only fueled our excitement.

Over the course of two days, Kobe, Adam, Chuck, and I harvested close to 80 doves, which yields roughly 160 delicious dove poppers. This nonstop action left us with empty hulls, tired eyes, and full of new stories. Being months since I last saw many of my midwestern pals, this hunt provided a much-needed reunion, with the dove hunting being the cherry on top. Not only am I thankful for the Mourning Dove from a harvest perspective, but also that this little bird is responsible for bringing hunters together and giving us the opportunity to walk away with lifetime memories. I hope you get out next year and make some memories dove hunting.



HEAVY DOVE LOADS

Long considered to be some of the best-balanced, most consistent patterning upland field loads available. They're the hunter's choice for fast-flying doves and a wide variety of game-bird applications. Available in 12ga and 20ga with shot size options of 7 1/2 and 8.

Economical - No matter how your day in the field goes, this load is designed for the high-volume shooter who wants an economical shotshell that is suitable for anything between a Dove or Quail.

High Quality Components - The internals in these loads are put together with the same components used in other leading Remington Shotshells

ORDER	GAUGE	LENGTH	FPS	OZ SHOT	SHOT
28755	12	2 3/4	1255	1 1/8	7 1/2
28757	12	2 3/4	1255	1 1/8	8
28777	20	2 3/4	1165	1	7 1/2
28779	20	2 3/4	1165	1	8

▶ See Page 83 for Ballistic Information

PREMIER ACCUTIP

SABOT SLUG

**PUNCHES HUGE HOLES WITH
PINPOINT ACCURACY**



It's flattening whitetails and competitors in the tipped-slug market with devastating ferocity. This slug is a masterpiece of aerodynamics that delivers tremendous knockdown force to the even at the farthest reaches of a rifled shotgun. Spiral nose cuts and high-strength cartridge brass jacket come together to create large, perfect mushrooms with over 95 percent weight retention from 5 to 200 yards.

Available in 2 3/4 or 3, 12ga and 20ga.



Power Port Tip

This tip allows for superior aerodynamics and accuracy than the traditional slug, even at distances

Slug Jacket

Our slug is jacketed with high-strength cartridge brass to ensure perfect expansion and mushrooms

Spiral Nose Cuts

Controlled expansion over all distances

ORDER	GAUGE	LENGTH	FPS	SLUG WEIGHT (OZ./GR.)
20727	12	2 3/4	1850	385 GR.
20731	12	3	1900	385 GR.
20496	20	2 3/4	1850	260 GR.
20498	20	3	1900	260 GR.

▶ See Page 83 for Ballistic Information



SLUGGER RIFLED SLUG

Our most popular, accurate, hard-hitting smooth bore slug. Slightly oversized for great smooth-bore shotgun performance, resulting in better sealing against the barrel wall for greater accuracy.



ORDER	GAUGE	LENGTH	FPS	SLUG WEIGHT (GR.)
20300	12	2 3/4	1560	1 OZ.
20302	12	2 3/4	1680	1 OZ.
20270	12	3	1760	1 OZ.
20616	20	2 3/4	1580	7/8 OZ.
20614	16	2 3/4	1600	4/5 OZ.
20618	410	2 1/2	1830	1/5 OZ.

▶ See Page 83 for Ballistic Information



SLUGGER HIGH VELOCITY

This higher velocity slug exits the barrel at 1800 fps, 13% faster than standard 1-oz. slugs. The 7/8-oz. Slugger High Velocity delivers more energy at 50 yards with flatter trajectory on deer than standard 1-oz. slugs. Produced in most popular slug loading, 2 3/4" and 3" 12ga, and 2 3/4" 20ga this slug ideal for the smooth bore user seeking greater velocity.



ORDER	GAUGE	LENGTH	FPS	SLUG WEIGHT (GR.)
28600	12	2 3/4	1800	7/8 OZ.
28604	12	3	1875	7/8 OZ.
28608	20	2 3/4	1800	1/2 OZ.

▶ See Page 83 for Ballistic Information



SLUGGER MANAGED RECOIL

Same devastating performance with 45% less felt recoil than full velocity Sluggers. Less recoil makes sighting-in more comfortable, while the accuracy and speed of second shots is greatly improved. And with effective energy out to 80 yards, it handles the majority of shotgun deer hunting ranges with ease.

ORDER	GAUGE	LENGTH	FPS	SLUG WEIGHT (GR.)
20290	12	2 3/4	1200	1 OZ.

▶ See Page 83 for Ballistic Information



Remington.com



EXPRESS BUCKSHOT & EXPRESS MAGNUM BUCKSHOT

Remington's Express Magnum and Express Buckshot are sure to handle anything between deer and bear. A combination of heavy cushioning behind the shot column and a granulated polymer buffering helps maintain pellet roundness for tight, even patterns. Our magnum shells pack even more shot into the shell which increases your odds at getting with more pellets on target with every round.



▶ See Page 83 for Ballistic Information

EXPRESS BUCKSHOT					
ORDER	GAUGE	LENGTH	FPS	OZ SHOT	SHOT
20406	12	2 3/4	1325	8 pel	000
20620	12	2 3/4	1325	9 pel	00
20622	12	2 3/4	1275	12 pel	0
20624	12	2 3/4	1250	16 pel	1
20626	12	2 3/4	1325	27 pel	4
20630	20	2 3/4	1220	20 pel	3

EXPRESS MAGNUM BUCKSHOT					
ORDER	GAUGE	LENGTH	FPS	PL CT	SHOT
20632	12	2 3/4	1290	12 pel	00
20408	12	3	1225	10 pel	000
20636	12	3	1225	15 pel	00
20640	12	3	1225	41 pel	4
20280	12	3 1/2	1125	18 pel	00



EXPRESS BUCKSHOT VALUE PACK

Available in a 25-round box or value pack 100-round sleeve (4 individual boxes), it's simply the best value in buckshot for home defense, tactical shooting or hunting. Buckshot value packs are loaded with Remington Express 00 Buckshot which have been chosen time and again because of their consistent patterns and knock down performance. For more confidence per box, choose Remington.



ORDER	GAUGE	LENGTH	FPS	OZ SHOT
20411	12	2 3/4	1325	9 PEL
20413	12	2 3/4	1325	9 PEL

▶ See Page 83 for Ballistic Information

RELOADING COMPONENTS



BAGGED SHOT

Made exclusively from our iconic Remington Lead Shot Tower, our bagged shot allows shotgun shooters to maximize the lifespan of their shotshell hulls.



Want to learn more?

Scan the QR Code to go our website.



WADS

Outfit your shotshell with Remington made wads. These wads keep patterns consistent, tight, and provide shot-to-target optimization.



Want to learn more?

Scan the QR Code to go our website.



SHOTSHELL PRIMERS

All great cartridges begin with excellent primers. Remington's factory-grade primers ensure your next shooting endeavor goes off without a hitch.



Want to learn more?

Scan the QR Code to go our website.



ORDER	GAUGE	LENGTH	FPS	OZ SHOT	SHOT
20240	12	2 3/4	1100	1 1/8	7.5
20242	12	2 3/4	1100	1 1/8	8
20155	12	2 3/4	1185	1	8
20110	12	2 3/4	1145	1 1/8	7 1/2
20112	12	2 3/4	1145	1 1/8	8
20114	12	2 3/4	1145	1 1/8	8 1/2
20116	12	2 3/4	1145	1 1/8	9
20250	12	2 3/4	1200	1 1/8	7 1/2
20252	12	2 3/4	1200	1 1/8	8
28059	20	2 3/4	1200	7/8	8
20217	20	2 3/4	1200	7/8	9
28057	28	2 3/4	1250	3/4	8
28053	28	2 3/4	1250	3/4	9
20750	410	2 1/2	1275	1/2	9

▶ See Page 83 for Ballistic Information



Shoot to win with a world-class combination of shot-to-shot consistency and reloadability. The choice of champions at major skeet, trap, and sporting clays shoots across the country, Premier STS Target Loads are the benchmark for target-crushing performance and a favorite at the reloading bench. But don't take our word for it, ask the long list of Remington champions winning with Premier STS.

Premier STS Hull

Our polyethylene hulls endure more reloads and show a smooth finish for that helps ensure positive feeding in competition guns

Remington Shot

Made exclusively from Remington Ammunition's iconic shot tower, this high antimony lead shot is perfectly rounded and boasts uniform patterns that clay shooters across the world trust

Power Piston Wad

This wad is engineered to compress evenly on ignition to cushion the shot and assist in delivering consistent patterns

NEW

RIFLE

SHOTSHELL

HANDGUN

RIMFIRE

SPECS



PREMIER NITRO SPORTING CLAYS

Smoke targets and conquer the competition with Premier Nitro Sporting Clays, the finest sporting clay loads in the world today. The shell's extra velocity gives you an added advantage for those long crossers, making target leads shorter for ultimate clay-crushing satisfaction. The unique Remington Premier gold hull has earned a reputation as one of the most reloader friendly designs ever to hit the clay target-shooting world.

ORDER	GAUGE	LENGTH	FPS	OZ SHOT	SHOT
28868	28	2 3/4	1300	3/4	7 1/2
28879	410	2 1/2	1300	1/2	8
R20132	12	2 3/4	1290	1	7 1/2
28850	12	2 3/4	1350	1	7 1/2
28860	20	2 3/4	1300	7/8	7 1/2
20264	12	2 3/4	1300	1 1/8	7 1/2
20266	12	2 3/4	1300	1 1/8	8
R20156	12	2 3/4	1325	7/8	7 1/2

▶ See Page 83 for Ballistic Information



PREMIER NITRO 27

Designed specifically for back-fence trap and long-range sporting clays, Premier Nitro 27 Target Loads deliver consistent handicap velocity and pattern uniformity shot after shot. Our Premier body and Power Piston Wad reduces felt recoil while retaining high velocity and world-class performance, allowing avid trap shooters to stay fresh for the shoot-off. Even more, Premier Nitro 27 scores just as high on fast-moving doves and boasts long-range effectiveness that's backed by a long list of Remington trapshooting champions.

ORDER	GAUGE	LENGTH	FPS	OZ SHOT	SHOT
20227	12	2 3/4	1290	1	7 1/2
20222	12	2 3/4	1235	1 1/8	7 1/2
20224	12	2 3/4	1235	1 1/8	8

▶ See Page 83 for Ballistic Information

Team Remington's World Class Athletes

Team Remington has once again proved to the shooting community that Remington is the home for world class athletes. Making their impact in all disciplines of clay breaking; skeet, trap, and sporting clays, Team Remington walked away with some significant victories throughout the 2024 season.



TRAP

Logan Henry, an experienced trap shooter for Team Remington, had an unforgettable year as he accomplished a life goal, taking home a world championship. Attending the iconic Grand American in Sparta, Illinois, Logan spent multiple days at the trap field battling hard against other talented shooters, eventually staking his ground on the winner's podium. After numerous close calls in prior years, Logan was able to seal the deal on a world championship title after battling through a high stake's shootout in trap doubles. High intensity, high emotions, but an even higher winner's platform. Congratulations, Logan. We're thrilled to have you on our team!

SKEET

Remington's skeet team performed exceptionally this year with numerous podium appearances and earned titles. Young prodigy, Sheaffer Stanfill walked away with wins at the NSSA's US Open, as well as a podium appearance at the 2024 World Skeet championships in San Antonio. For the ladies, Remington's own, Alison Boyette, landed a spot in the winner's circle with a remarkable World Championship for 28ga. Last but not least, Clay Baldwin, an Arkansan who grew up 7 miles from our Lonoke plant, was introduced into the National Skeet Shooting Association Hall of Fame. For a shooter who holds multiple world titles and 4 perfect 400's, this introduction is the truest testament to his lifelong commitment to the sport of skeet shooting and to Remington Ammunition. Congratulations, Clay.



SPORTING

Two-time National Champion Brandon Powell, Madison Sharpe, and Turner Parcell all took home serious hardware. Powell scored HOA, Sharpe was crowned champion of the Ladies division, and Parcell took his title in the junior division with a champion title. Outside of the World Sporting Championship, Powell scored HOA for combined 5-stand event at the World FITASC Championship, HOA at the NSCA North central Regional, and another HOA victory at the South-Central Regionals & FITASC Slam.

Team Remington, thank you for representing Big Green on the clay fields, your unwavering support for our brand, and your dedication to the sport of clay shooting. We know 2025 will be full of victories and shiny hardware. Shoot straight!





LOW DECIBEL

Break Clays with less recoil. Remington Low Decibel is the best 410 Bore answer for shooting subsonic shotshells. With a muzzle velocity of only 650 fps, your recoil is reduced without sacrificing dense, clay-busting patterns downrange. Turn down the noise and turn up the fun with Remington Low Decibel.

ORDER	GAUGE	LENGTH	FPS	OZ SHOT	SHOT
R20740	410 BORE	2 1/2	650	1/2	9

▶ See Page 83 for Ballistic Information



PETERS PREMIER

Peters Blue brings you the traditional style paper hull shotshells you love. Tuned for the modern trap, skeet and sporting clay shooter, the paper hulls reduce felt recoil for a more enjoyable day at the range. Peters Paper packs the same powerful components found in other Remington Premier loads. Enjoy the sweet smell of paper, victory, and nostalgia.

ORDER	GAUGE	LENGTH	FPS	OZ SHOT	SHOT
28758	12	2 3/4	1290	1	7 1/2
28745	12	2 3/4	1145	1 1/8	7 1/2
28746	12	2 3/4	1145	1 1/8	8
R28749	12	2 3/4	1200	1 1/8	7 1/2
28751	12	2 3/4	1200	1 1/8	8

▶ See Page 83 for Ballistic Information



GUN CLUB TARGET LOAD

Spend less and shoot more. Remington Gun Club Target Loads are an excellent choice for a budget-savvy shooter, these are the highest quality budget shotshells on the market. Featuring Gun Club Grade Shot, Premier Primers, and Power Piston One-Piece Wads, these high-quality shells receive the same care in loading as our top-of-the-line Premier STS and Nitro 27 shells. Available in most gauges including low recoil loads, this shell is guaranteed to give you more bang for your buck.



ORDER	GAUGE	LENGTH	FPS	OZ SHOT	SHOT
20243	12	2 3/4	1100	1 1/8	8
R20029	12	2 3/4	1145	1 1/8	8
R20031	12	2 3/4	1100	1 1/8	8
20081	12	2 3/4	1185	1	8
20244	12	2 3/4	1145	1 1/8	7 1/2
20230	12	2 3/4	1145	1 1/8	8
20248	12	2 3/4	1145	1 1/8	9
20232	12	2 3/4	1200	1 1/8	7 1/2
20234	12	2 3/4	1200	1 1/8	8
20239	20	2 3/4	1200	7/8	7 1/2
20235	20	2 3/4	1200	7/8	8
20236	20	2 3/4	1200	7/8	9

▶ See Page 83 for Ballistic Information

Shoot To Cure Raises Thousands for Arkansas Children's Hospital



“This one-day event brings in thousands of dollars that go straight to supporting children within the community,” said Remington’s Senior Marketing Coordinator, Audrey Mayes, “I could not be prouder to be a part of putting together this shoot. It showcases how we here at Remington show up for our local community.”

Remington Ammunition always aims to help the local community by looking for opportunities to invest in our neighborhood. The Shoot to Cure Sporting Clays Fundraiser is an annual event that is held at the Remington Gun Club to raise money for Arkansas Children’s Hospital. All the proceeds from this event, in conjunction with the Gun Club Cure shotshell ammunition that is sold year-round, go straight to helping families with children in need.

This year marked the third-annual Shoot to Cure event, and it was the biggest yet. Bringing in 28 teams and a total of 140 shooters, folks came from all over to participate in a day of friendly competition and philanthropy. “This one-day

event brings in thousands of dollars that go straight to supporting children within the community,” said Remington’s Senior Marketing Coordinator, Audrey Mayes, “I could not be prouder to be a part of putting together this shoot. It showcases how we here at Remington show up for our local community.”

For the third year in a row, Healthway Pharmacy walked away with the blue, winning trophy. Their five-person team score reached an impressive 412 out of 500. This year also brought a lot of prizes to be won which included shotguns, rifles, gun cases, and ammunition. Volunteers from the Lonoke factory kept score, pulled birds, and laughed along with the participants as the day progressed. As this event continues to grow, we look forward to continuing our support of Arkansas Children’s Hospital.

Thank you to all of the participants, sponsors, and volunteers that make this event possible. The unwavering support and commitment to the cause has made a significant difference in the lives of countless children.



Want to learn more?
Scan the QR Code to watch a video

GUN CLUB CURE

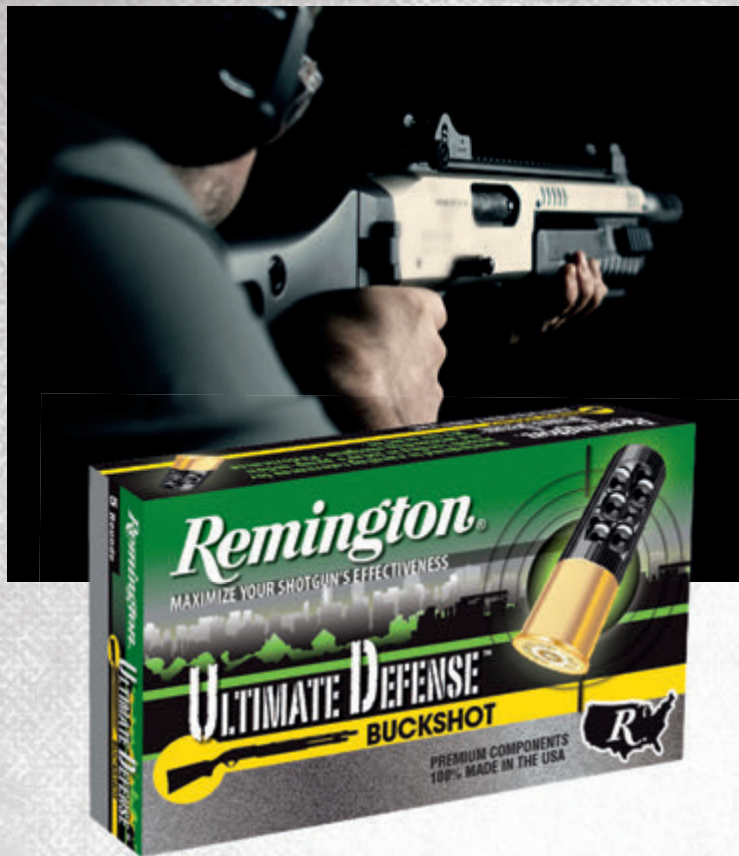


Ignite a fire of compassion and support with Remington Gun Club Cure. This shotshell isn’t just about hitting targets; it’s a powerful force for good. A portion of the proceeds from every purchase goes directly to children’s hospitals and disease research, making your day at the trap, skeet, or sporting clays course a meaningful contribution to real families nationwide. Gun Club Cure’s distinctive hull is not just a symbol of support; it is a testament to your dedication to a cause that truly matters. Available in two 12ga loads; including low-recoil option.

ORDER	GAUGE	LENGTH	FPS	OZ SHOT	SHOT
R20029	12	2 3/4	1145	1 1/8	8
R20031	12	2 3/4	1100	1 1/8	8

▶ See Page 83 for Ballistic Information

NEW
RIFLE
SHOTSHELL
HANDGUN
RIMFIRE
SPECS



ULTIMATE DEFENSE BUCKSHOT

Ultimate Defense Buckshot rounds deliver dense, devastating patterns that yield massive knock down power when you need it the most. Full-power 12ga, Managed Recoil 12ga, and 20ga loads complete this line by offering buckshot products well suited to anyone's desire for maximizing their shotguns effectiveness against an imminent threat.

ORDER	GAUGE	LENGTH	FPS	PL CT	SHOT
20713	12	2 3/4	1325	9 pel	00 BK
20711	12	2 3/4	1200	8 pel	00 BK
20633	12	3	1225	15 pel	00
20639	12	3	1225	41 pel	4
20637	12	2 3/4	1200	21 pel	4
20681	20	2 3/4	1140	17 pel	3
20697	410	2 1/2	1225	4 pel	000 BK
20707	410	3	1125	5 pel	000 BK

MANAGED RECOIL					
ORDER	GAUGE	LENGTH	FPS	PL CT	SHOT
20282	12	2 3/4	1200	8 pel	00 BK

▶ See Page 83 for Ballistic Information

Dustin Sanchez: Discovering Community in 3-Gun

It was growing up in Central Texas where my love for shotguns began at an early age. I have vivid memories of my cousins, and I dove hunting in the fields each fall. I can still remember learning the art of holding my shotgun, lining up the bead with the rib just right, and controlling my trigger pull so I could hit those tiny targets in the sky. My love for shotguns only grew from there.

As I began my journey competing in shooting sports, primarily 3-gun, I quickly noticed how the shotgun not only came more naturally to me but how this platform was becoming my favorite over the rifle and pistol. The versatility and challenge of using a shotgun in set-pursuit that I couldn't resist. The rhythm and flow between myself and the shotgun as I navigated the course of fire felt more like an art form than a sport. I began wondering how far I could push the ammo and firearm, whether it was a semi-auto or pump, it didn't matter, they both were fun. This led me to spend the afternoons at the range shooting at a pattern board giving me the opportunity to dive deep into optimizing my shotgun setup and understanding how my ammo performed with different choke tubes for specific targets.

It didn't stop there, though, my evenings were spent learning the various ways to load each shotgun from weak hand, strong hand, and ultimately quad loading, all while racing the clock. Preparing for all the local matches, the Nordic Shotgun Championship and Pure Gold Championship solidified my passion and time spent in the sport. Looking back at how much time was spent studying one platform seems crazy, and every time I feel like it's time to step away, it seems to be lurking in the shadows with some new challenge to accomplish.

These days, it's the 2026 IPSC Shotgun World Championship in Greece. The opportunity to compete against the world's best alongside my fellow Americans is something that I have only dreamt about. The community, the thrill, and the constant learning make it an incredible experience for anyone willing to dive in. Now, with IPSC Shotgun Worlds and USPSA recognizing tactical shotgun, the world of tactical shotgun looks more promising than ever.

I fell in love with 3-gun

By Audrey Mayes, Sr. Marketing Coordinator

I walked into Zombies in the Heartland, a large 3-gun match in Grand Island, Nebraska, having never shot a tactical semi-automatic shotgun, on my first duty belt, I felt like a poser. My arms didn't know where to go, and my body hadn't been accustomed to having a firearm strapped to it. Walking through my first stage was intimidating to say the least, but when the first beep went off and I felt the mag click into place as I pulled my handgun out of the holster with intent and gave it my first trigger pull – I was hooked.

The first few stages were nothing fancy, I switched between guns with ease and before I knew it I started to go through them fairly quickly. To my surprise, no one was there to intimidate, not a person laughed when I fumbled. Everyone at Zombies wanted me to succeed, to enjoy my first experience, to fall in love with the sport they enjoyed. What's not to love about busting down doors, and firing off hundreds of rounds?

The community I found in the multi-gun sport world has been the most welcoming and supporting group of people. Tips, tricks, and advice on how to improve are always freely given, and invitations to join competitions and training opportunities are constant. The combination of physical fitness and gun handling skills will challenge you, and I promise you will never be bored as there is always a piece of your skill set that will need work. Before you know it your handgun will feel at home by your side, your rifle will become lighter and less cumbersome to handle, and that AR platform shotgun will make you wonder why you hadn't bought one sooner.

Your first competition experience should be a fun and safe way to explore action shooting in a controlled environment. If you choose the right match to be your first, there will be plenty of people there to lend a helping hand as you take your first steps into the world of competition shooting. I found the community to be unlike any other; people were more than happy to lend me their firearms, give me stage advice, and the range officers would even walk you through the stage if you asked them to do so. Every pull of the trigger was an enjoyable experience. I walked away from Zombies in The Heartland with all the equipment I needed to shoot in a 3-Gun match on my own and felt more comfortable handling a handgun than ever before. It was absolutely worth it and added another hobby to my list.

TIPS FOR BEGINNERS:

- **Don't be intimidated.** Everyone must start somewhere. When you try something new it's ok to be nervous, but it's not ok to not try.
- **Ask all the questions.** People at 3-gun matches are more than happy to help, give tips and advice, lend you firearms, and even walk you through the stages.
- **Try not to get sucked up in how other people are running stages.** There will be people in your squad that have probably competed before and are in higher divisions than you. Don't let their performance dictate how you feel about your performance (time, shots on target, etc.).
- **Make small achievable goals.** For your first attempt, I suggest you keep things simple. Good goals for a first timer are: don't get disqualified at any stages, run at least one clean stage, and learn something at each stage.

Want to learn more?

Scan the QR Code to watch a video





HANDGUN

GOLDEN SABER BONDED	48
REMINGTON RANGE	48
CORE LOKT HANDGUN	48
SUBSONIC	48
GOLDEN SABER DEFENSE	49
HTP HIGH PERFORMANCE	49
REMINGTON RANGE CLEAN	50
PERFORMANCE WHEELGUN	50
UMC HANDGUN	51

“There’s a lot of arguments about 9mm versus other handgun calibers and that it is a little faster so you keep a better, flatter trajectory at longer ranges.”

– Leland Mason, Research and Development Engineer



Scan to hear the episode:
Why the 9mm Reigns Supreme. Exploring the Caliber’s Dominance





CORE-LOKT HANDGUN

Core-Lokt Handgun lets every pistol and revolver hunter shoot the ammo that has dropped more deer than any other since 1939. These Core-Lokt hollow point projectiles are optimized for ultimate handgun hunting performance that has the Deadly Mushroom expansion you're familiar with. Tuned for pistol-length barrels and velocities, get ready for your next whitetail, hog, or black bear excursion with Core-Lokt Handgun.

* All Bullet Styles are SJHP

CARTRIDGE	ORDER	WT (GR)
357 MAGNUM	R20220	180
10MM AUTO	R20231	200
41 REM MAG	R20225	210
44 REM MAG	R20228	240

▶ See Page 75 for Ballistic Information



* All Bullet Styles are BJHP

▶ See Page 75 for Ballistic Information

Scan to hear the episode.



GOLDEN SABER DEFENSE

Built on a trusted law enforcement platform, our personal defense ammunition features high-performance Golden Saber Brass Jacketed Hollow Point (BJHP) bullets, ensuring massive expansion and deep penetration for superior stopping power. Premium nickel-plated cases resist corrosion and cycle reliably even after extended storage. Available in full size and compact options for pistols and revolvers. Golden Saber Defense Compact is specifically designed for concealed carry, providing substantial terminal performance from shorter-barreled firearms.

CARTRIDGE	ORDER	WT (GR)
357 MAGNUM	27600	125
9MM LUGER	27601	124
9MM LUGER+P ‡	27603	124
380 AUTO	27605	102
38 SPL+P ‡	27606	125
40 S&W	27607	165
40 S&W	27608	180
10MM AUTO	R21369	180
45 AUTO	27609	185
45 AUTO+P ‡	27611	185
45 AUTO	27612	230



GOLDEN SABER BONDED

Revolutionary features give Golden Saber the edge in defensive handgun rounds, along with, along with the unmatched barrier-penetration performance of our special bonded-bullet design. Exceptional weight retention—up to 97% through auto glass. Jacket stiffness and thickness optimized to eliminate over-expansion, thus maximizing penetration.

* All Bullet Styles are BJHP

CARTRIDGE	ORDER	WT (GR)
357 SIG	29407	125
9MM LUGER+P ‡	29341	124
9MM LUGER	29343	147
40 S&W	29363	165
40 S&W	29365	180
10MM AUTO	R21368	180
45 AUTO	29325	185
45 AUTO	29327	230



REMINGTON RANGE

Save on price without compromising on quality with Remington Range. A line of FMJ handgun ammunition designed with the frequent shooter in mind. Remington Range is built with high quality, factory fresh components. Available in 9MM Luger or 40 S&W.

* All Bullet Styles are FMJ

CARTRIDGE	ORDER	WT (GR)
9MM LUGER	R27778	115
9MM LUGER	R23975	115
9MM LUGER	R23972	115
9MM LUGER	R27779	115
9MM LUGER	R27780	124
40 S&W	27781	180



SUBSONIC

Remington Subsonic Handgun ammunition is specifically designed for shooting in suppressed pistols. Engineered for maximum performance at subsonic velocities and — after a long session at the range — easier cleaning thanks to enclosed base bullets that virtually eliminate leading in suppressor baffles.

* All Bullet Styles are FNEB

CARTRIDGE	ORDER	WT (GR)
9MM LUGER	28435	147
45 AUTO	28428	230



▶ See Page 75 for Ballistic Information

HTP HIGH PERFORMANCE

High Terminal Performance packs ample punch to deliver instant stopping power when you need it most. Manufactured with Premier components, HTP is available in most popular defense calibers.

CARTRIDGE	ORDER	WT (GR)	BULLET STYLE
30 SUPER CARRY	R20019	100	JHP
32 H&R MAG	R20017	85	JHP
357 MAGNUM	22237	110	Semi-JHP
357 MAGNUM	22227	125	Semi-JHP
357 MAGNUM	22231	158	Semi-JHP
357 MAGNUM	22233	158	SP
357 MAGNUM	22239	180	Semi-JHP
9MM LUGER	28288	115	JHP
9MM LUGER+P ‡	28293	115	JHP
9MM LUGER	28295	147	JHP
380 AUTO	22248	88	JHP
38 SPL+P ‡	22295	110	Semi-JHP
38 SPL	22293	110	Semi-JHP
38 SPL+P ‡	22303	125	Semi-JHP
38 SPL+P ‡	22297	158	LHP
40 S&W	22306	155	JHP
40 S&W	22308	180	JHP
41 REM MAG	23000	210	JSP
44 REM MAG	23002	240	JSP
44 REM MAG	23010	240	Semi-JHP
45 COLT	23012	230	JHP
45 AUTO	21453	185	JHP
45 AUTO	21455	230	JHP



REMINGTON RANGE CLEAN

From lead-free primers to specially designed bullets, economical Remington Range Clean cartridges virtually eliminate lead exposure at the firing line. A must-have for shooters who frequent indoor ranges, its jacketed bullet's enclosed base prevents lead exposure upon firing. Standard bullet weights duplicate the ballistics of conventional loads. Making the switch over an easy one without flight issues.

* All Bullet Styles are FNEB

CARTRIDGE	ORDER	WT (GR)
9MM LUGER+P	27681	115
380 AUTO	27683	95
40 S&W	27685	180
45 AUTO	27687	230

▶ See Page 75 for Ballistic Information



PERFORMANCE WHEELGUN

Performance Wheelgun delivers ultimate consistency, accuracy and ironclad reliability, and is engineered to take your revolver and lever-action rifle skills to new heights.

CARTRIDGE	ORDER	WT (GR)	BULLET STYLE
32 S&W	22206	88	LRN
32 S&W LONG	22210	98	LRN
32 H&R MAG	20021	95	Lead SWC
357 MAG	22223	158	Lead SWC
38 S&W	22278	146	LRN
38 SPL	22267	148	Target Master Wadcutter
38 SPL	22271	158	Lead SWC
38 SPL	22281	158	LRN
38 SHORT COLT	22273	125	LRN
44 S&W SPL	22333	246	LRN
45 COLT	22338	225	Lead SWC
45 COLT	22340	250	LRN

▶ See Page 75 for Ballistic Information



Proudly loaded by Remington Ammunition for over 100 years, UMC ammunition is made using first-quality, factory-fresh brass and clean-shooting Kleanbore primers which provide the best value for high volume shooters. Made right here in Lonoke, Arkansas USA.

Remington Quality

UMC Handgun ammunition uses brass shell cases and Kleanbore primers proudly made at the Lonoke, Arkansas ammunition factory.

Availability

UMC Handgun is offered in a variety of bullet styles in 15 popular handgun calibers to match shooter preference.

Economical

UMC Handgun is the best value a high-volume shooter can get when participating in any aspect of the target shooter lifestyle.

CARTRIDGE	ORDER	WT (GR)	BULLET STYLE	CARTRIDGE	ORDER	WT (GR)	BULLET STYLE
25 AUTO (6.35MM BROWNING)	23716	50	FMJ	38 SPL	23731	130	FMJ
30 SUPER CARRY	R20015	100	FMJ	38 SPL	23724	158	LRN
32 AUTO (7.65MM BROWNING)	23704	71	FMJ	40 S&W	23746	165	FMJ
327 FEDERAL MAGNUM	R20016	100	JSP	40 S&W	23773	165	FMJ
357 MAGNUM	23738	125	JSP	40 S&W	23694	180	JHP
357 MAGNUM	R23970	125	JSP	40 S&W	23687	180	JHP
357 SIG	23734	125	FMJ	40 S&W	23742	180	FMJ
357 SIG	23692	125	JHP	40 S&W	23795	180	FMJ
9MM LUGER	23752	115	JHP	40 S&W	23779	180	FMJ
9MM LUGER	23753	115	JHP	40 S&W	23647	180	FMJ
9MM LUGER	23728	115	FMJ	10MM AUTO	23706	180	FMJ
9MM LUGER	23765	115	FMJ	44 REM MAG	23744	180	JSP
9MM LUGER	23777	115	FMJ	45 AUTO	23726	230	FMJ
9MM LUGER	23645	115	FMJ	45 AUTO	23797	230	FMJ
9MM LUGER	23659	115	FMJ	45 AUTO	23781	230	FMJ
9MM LUGER	23718	124	FMJ	45 AUTO	23649	230	FMJ
9MM LUGER	23732	147	FMJ	45 AUTO	23649	230	FMJ
380 AUTO	23720	95	FMJ	45 AUTO	23818	185	FMJ
380 AUTO	R23974	95	FMJ	45 AUTO	23726	230	JHP
380 AUTO	23721	95	FMJ	45 AUTO	23689	230	JHP
38 SUPER AUTO +P	23722	130	FMJ	45 GAP	23691	230	FMJ
38 SPL+P ‡	23754	125	JHP	45 AUTO	23817	230	FMJ
38 SPL+P ‡	23771	125	JHP				
38 SPL	23730	130	FMJ				

▶ See Page 75 for Ballistic Informationx



RIMFIRE

NEW 22 SHORT	54
NEW PERFORMANCE WHEELGUN	54
NEW RANCH HAND	55
GOLDEN BULLET	55
SUBSONIC 22	56
CBEE 22	56
STANDARD V	56
22 VIPER	56
22 CYCLONE	56
22 YELLOW JACKET	56
22 TARGET	56
GOLDEN HUNTER	57
THUNDERBOLT	58
PREMIER MAGNUM AND MAGNUM RIMFIRE	58

“Having a little bit of a finicky firearm, I know for a fact that it’s going to work with Ranch Hand when I pick it up off of the shelf”

– Jason Slinkard, Global Product Line Manager of Rimfire and Primer



Scan to hear the episode:
Remington Rimfire Roundup: Ranch Hand and Golden Hunter



22^{SHORT}



Remington is proud to reintroduce our 22 short round which is perfect for first time shooters who want to gain confidence in firearms or a varmint control specialist.

Versatility

Great for plinking, punching paper, or pest control

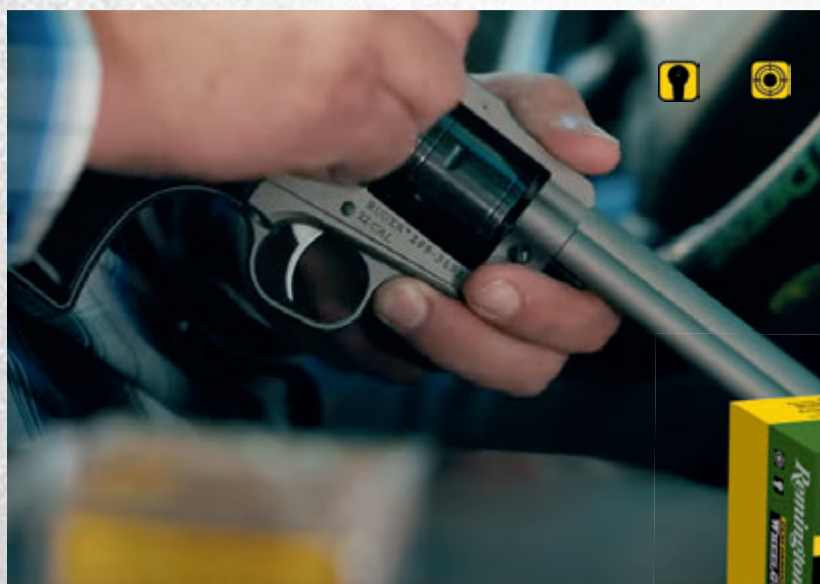
Remington Engineering

Accuracy and consistency

User Friendly

Low Noise for increased enjoyment

▶ See Page 93 for Ballistic Information



PERFORMANCE WHEELGUN 22

Wheelgun 22 Ammunition is designed for low noise output and for optimal performance in your favorite 22 6 shooter. This cartridge will ensure adequate performance in old style revolvers with the strong reliability that performs exceptional no matter your endeavor.



▶ See Page 93 for Ballistic Information

RANCH HAND™



▶ See Page 93 for Ballistic Information

Ranch Hand is Remington's most dependable 22 LR round ever made. Hands down. Featuring our new and improved 22 technology, each round offers Premier high performance in your gun and on your target. Ideal for small game or varmint hunting, Ranch Hand's copper plated projectiles are available in a hollow point or round nose. No matter your firearm preference, Ranch Hand is tested to ensure flawless feed, function, and fire across all common 22LR handguns and rifles, Yeehaw y'all.

22 GOLDEN™ BULLET 22 LONG RIFLE



▶ See Page 93 for Ballistic Information

The Legendary 22 Golden Bullet cartridge is available in a Plated Round Nose or Plated Hollow Point bullet and is engineered for easy cycling and high velocity. This increased velocity yields greater downrange energy, extending your effective range. Improved priming compound ensures consistent ignition at a great value.

Multiple Round Counts

Available in 50 or 100 round boxes, 225 or 525 round bricks and economical 1,400-round buckets

Plated Round Nose & Hollow Point

Ring steel, punch paper, or knock down cans with our Round Nose Bullet and take down small game with our Hollow Point



SUBSONIC 22

Remington Subsonic delivers superior stealth and consistency below the sound barrier. Its tack-driving performance is manufactured with tight velocity control to eliminate supersonic cracks. Subsonic's copper-plated hollow point is optimized for reduced lead buildup in suppressor ports and maximum effectiveness at lower velocity.



CBEE 22

Combines low noise with excellent shot-to-shot consistency. Its 33-grain Plated Truncated-Cone Hollow Point bullet is ideal for dispatching varmints and small game at close range as quietly as possible. Its tiny report makes it an excellent choice for new shooters as well.



STANDARD V

This new rimfire product is the solution for high volume shooters who are seeking an economical cartridge chambered in 22 LR caliber. Whether you are teaching a beginner how to shoot a firearm, plinking targets, or chasing varmints, Standard V has you covered.



22 VIPER

These Plated Truncated Cone Solid Bullets are renowned for their high velocity and energy delivery on targets. The large diameter of the flat nose imparts tremendous shock at the entry point, while the solid bullet retains all its weight to penetrate deep. These hyper-velocity loads hold their own at the target board as well. For fast-striking, 22 performance, Viper can't be beat.



22 CYCLONE

High velocity increases downrange energy, extending your effective range with 36-grain hollow point terminal performance. No matter what you put in your sights, Remington Cyclone is the perfect 22 rimfire ammunition for just about any occasion.



22 YELLOW JACKET

22 Yellow Jack brings the excellent penetration of a Truncated Cone combined with the stopping power and massive wound channel of a hollow point. These bullets are specially designed to deliver maximum on-game energy with excellent precision. Yellow Jacket leaves a hyper-velocity sting wherever they're dispatched.



22 TARGET

With 40-grain round nose bullets propelled by powder and primer charges of exacting consistency, Remington 22 Target ammunition delivers match-grade precision and championship performance in every round.



▶ See Page 93 for Ballistic Information

22 GOLDEN HUNTER™ HOLLOW POINT



▶ See Page 93 for Ballistic Information

RIMFIRE HUNTING'S GOLD STANDARD. Small game beware! Golden Hunter is ready for a 22 LR takedown. At home on a squirrel, in thick brush on a rabbit, or any small game up to a coyote, 22 Golden Hunter reliably expands for quick force transfer on target. The 40-grain hollow point projectile penetrates to optimal depths while performing in any barrel length at common hunting distances. Rifle or pistol, 22 Golden Hunter is your best choice in rimfire hunting rounds.

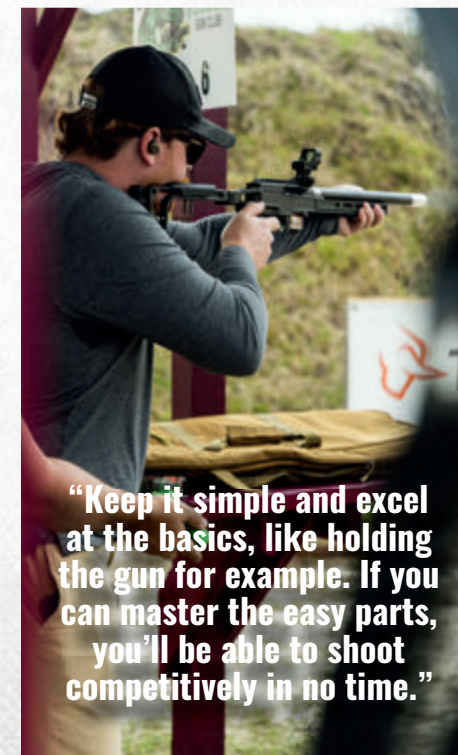
Hunter's Choice

Great for raccoons, rabbits, squirrels, and even coyotes

Continuous Improvement

Improved Rimfire Technology: Remington's new and improved rimfire gives you consistently high quality, accuracy and on-target performance

Meet Ben Bell: Rimfire Innovator & Champion Shooter



“Keep it simple and excel at the basics, like holding the gun for example. If you can master the easy parts, you'll be able to shoot competitively in no time.”

At Remington Ammunition, we're not just suppliers—we're passionate shooters. Ben Bell, our Rimfire Process Engineer in Lonoke, Arkansas and his team innovate rimfire processes and oversee operations that produce billions of rounds.

Ben's journey in shooting started in high school, where it became a way to bond with his grandfather. From there, he dove into competitive shooting, participating in national, regional, and local tournaments for both centerfire pistols and rimfire firearms. A proud holder of the National Title for the A-Class Rimfire Steel Challenge, Ben knows what it takes to compete. These challenges demand speed and precision, with five targets to hit as quickly as possible. The thrill of competition is both exhilarating and demanding, pushing shooters to their limits.

Ben loves introducing newcomers to the sport. “The common reaction from first-time shooters is pure excitement—they want to improve for next time,” he shares. His advice for beginners? “Keep it simple and focus on the basics. Mastering fundamental skills, like how to hold the gun, is key to shooting competitively.”

So, when you step up to the line for the first time with Remington rimfire, remember that you're part of a vibrant community. Just like Ben, who is there to support and inspire you, you too can embrace the challenge and excitement of competitive shooting. Your journey starts here!



THUNDERBOLT

These cartridges have become the outstanding favorite of 22 owners across the world. These round nose bullets in high-velocity loads cover the broadest range of 22-caliber applications. No wonder 22 Thunderbolt is our best-selling and most popular round of all time.



▶ See Page 93 for Ballistic Information



PREMIER MAGNUM AND MAGNUM RIMFIRE

Premier Magnum Rimfire cartridges are super-tuned to deliver unmatched shot-to-shot consistency, pin-point accuracy and explosive terminal performance. It's the ultimate choice for small game and varmint hunting. Available in 17 HMR and 22 WIN Mag.

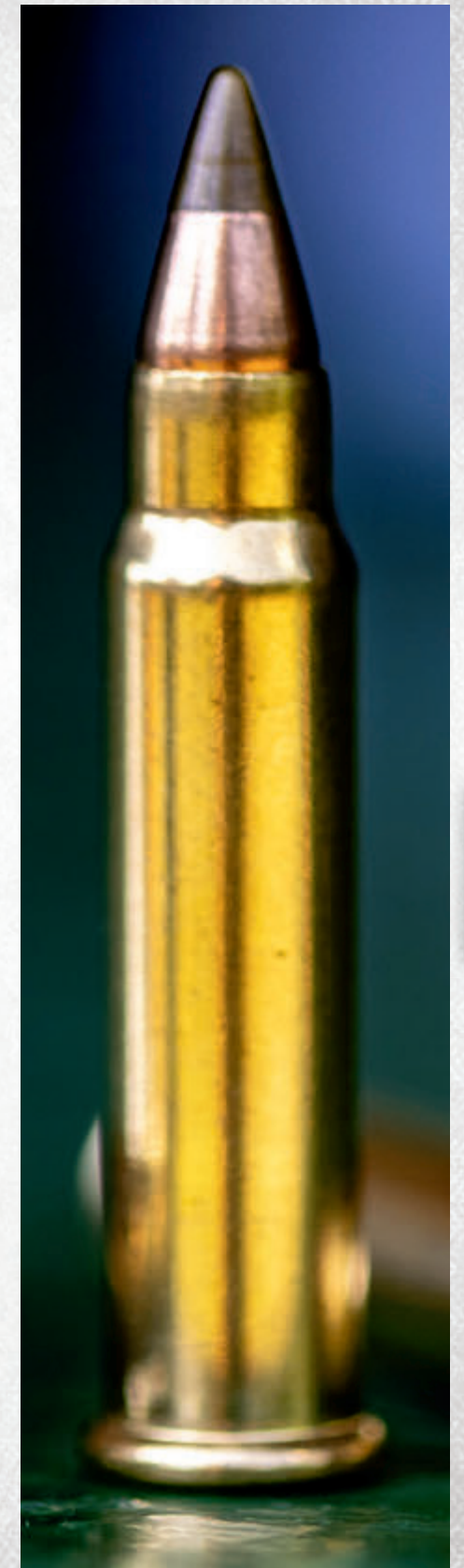


▶ See Page 93 for Ballistic Information

Rimfire Products By Count

▶ See Page 93 for Ballistic Information

COUNT	PRODUCT	ORDER	WT	BULLET STYLE
50 CT	17 HMR	28464	17	ATV BT
50 CT	17 HMR	21184	33	ATV BT
50 CT	22 CYCLONE	21222	36	LHP
50 CT	22 SHORT	R21002	29	CPRN
50 CT	22 SHORT	R21003	27	HP
50 CT	22 GOLDEN BULLET	21008	36	PHP
50 CT	22 GOLDEN BULLET	21006	40	PRN
50 CT	22 TARGET	21022	40	LRN
50 CT	22 THUNDERBOLT	21238	40	LRN
50 CT	22 VIPER	21080	36	PTCS
50 CT	22 WIN MAG	20023	17	JHP
50 CT	22 WIN MAG	20025	20	JSP
50 CT	22 WIN MAG	21170	40	JHP
50 CT	22 WIN MAG	21172	40	PSP
50 CT	22 YELLOW JACKET	21074	33	PTCHP
50 CT	SUBSONIC	21135	40	CPHP
100 CT	22 GOLDEN BULLET	21278	36	PHP
100 CT	22 GOLDEN BULLET	21276	40	PRN
100 CT	22 GOLDEN HUNTER	R21251	40	PHP
100 CT	22 TARGET	21284	40	LRN
100 CT	22 VIPER	21288	36	PTCS
100 CT	22 YELLOW JACKET	21280	33	PTCHP
100 CT	CBEE 22	21119	33	PTCHP
100 CT	RANCH HAND	R21263	40	PRN
100 CT	RANCH HAND	R21273	38	PHP
100 CT	SUBSONIC	21137	40	CPHP
225 CT	22 CYCLONE	R21261	36	HP
225 CT	22 GOLDEN BULLET	21229	36	PHP
225 CT	22 VIPER	21239	36	PTCS
225 CT	22 YELLOW JACKET	21233	33	PTCHP
225 CT	SUBSONIC	21249	40	CPHP
500 CT	22 THUNDERBOLT	21241	40	LRN
525 CT	22 GOLDEN BULLET	21250	36	PHP
550 CT	STANDARD V	R20988	38	LRN
550CT	22 GOLDEN HUNTER	R21253	40	PHP
1400CT	22 GOLDEN BULLET	21231	36	PHP



NEW

RIFLE

SHOTGHELL

HANDGUN

RIMFIRE

SPECS



SPECIFICATIONS

CENTERFIRE RIFLE BALLISTICS	62
SHOTHELL BALLISTICS	82
RIMFIRE BALLISTICS	92

“At its most basic, the word ballistics is the science of measuring the performance of our industry.”
– Jimmy Lawrence, Ballistics Engineer



Scan to hear the episode:
Big Green Ballistics



Centerfire Rifle Ballistics

50 CT = * | 100 CT = ** | 225 CT = *** | 500 CT = **** | 650 CT = ***** | 1000 CT = S | Vented Barrel = # | BC = BALLISTIC COEFFICIENT | BL = Barrel Length | Sight Height for all Cartridges except Core-Lokt and Ultimate Defense (2.5 inches) is 1.5 inches.

CARTRIDGE	LINE	INDEX	ORDER	WT (GR)	BULLET STYLE	PRIMER	ZERO (YDS)	VELOCITY (FPS) IN YARDS					ENERGY (FT-LB) IN YARDS					TRAJECTORY (INCHES) IN YARDS					BC	BL			
								MUZ	100	200	300	400	500	MUZ	100	200	300	400	500	MUZ	100	200			300	400	500
17 Remington Fireball	Premier AccuTip-V	PRA17FB	29165	20	AccuTip-V	7 1/2	200	4000	3380	2840	2360	1930	1555	710	507	358	247	165	107	-1.5	0.8	0.0	-5.1	-16.6	-37.6	0.185	24
	UMC	L17FBV	29472	25	Jacketed Hollow Point	7 1/2	200	3850	3273	2767	2313	1905	1547	823	595	425	297	201	133	-1.5	0.9	0.0	-5.5	-17.6	-39.34	0.193	24
17 Remington	Premier AccuTip-V	PRA17RA	29162	20	AccuTip-V	7 1/2	200	4250	3594	3028	2529	2081	1684	802	574	407	284	192	126	-1.5	0.6	0.0	-4.4	-14.4	-32.51	0.185	24
	High Performance Rifle	R17R2	28460	25	Hollow Point	7 1/2	200	4040	3420	2881	2402	1972	1594	906	649	461	320	216	141	-1.5	0.8	0.0	-5.0	-16.1	-36.27	0.187	24
204 Ruger	Premier AccuTip-V	PRA204A	29218	32	AccuTip-V	7 1/2	200	4225	3645	3137	2683	2272	1899	1268	944	699	512	367	256	-1.5	0.6	0.0	-4.1	-13.1	-28.95	0.21	24
	Premier AccuTip-V	PRA204B	29220	40	AccuTip-V	7 1/2	200	3900	3482	3103	2755	2433	2133	1351	1077	855	674	526	404	-1.5	0.7	0.0	-4.3	-13.2	-28.07	0.275	24
22 Hornet	Premier AccuTip-V	PRA22HNA	29154	35	AccuTip-V	6 1/2	100	3100	2271	1590	1126	--	--	747	401	197	99	--	--	-1.5	0.0	-5.6	-25.5	--	--	0.109	24
	High Performance Rifle	R22HNT	28376	45	Pointed Soft Point	6 1/2	100	2690	2044	1505	1130	--	--	723	417	226	128	--	--	-1.5	0.0	-7.1	-30.0	--	--	0.13	24
220 Swift	High Performance Rifle	R220S1	21297	50	Pointed Soft Point	9 1/2	200	3780	3158	2617	2135	1710	1357	1586	1107	760	506	325	204	-1.5	1.0	0.0	-6.2	-20.1	-46.14	0.175	24
	Premier AccuTip-V	PRA221FB	29172	50	AccuTip-V	7 1/2	200	2995	2605	2246	1917	1621	1368	996	753	560	408	292	208	-1.5	1.8	0.0	-8.8	-27.1	-58.81	0.238	24
222 Remington	High Performance Rifle	R222R1	21303	50	Pointed Soft Point	7 1/2	200	3140	2601	2121	1697	1347	1105	1094	751	499	320	202	136	-1.5	1.9	0.0	-9.7	-31.8	-73.11	0.175	24
	Premier AccuTip-V	PRA222RB	29174	50	AccuTip-V	7 1/2	200	3140	2743	2380	2045	1740	1471	1094	835	629	464	336	240	-1.5	1.6	0.0	-7.8	-23.9	-51.68	0.242	24
223 Remington	UMC	L223R3	23711 *	55	Full Metal Jacket	7 1/2	200	3240	2759	2325	1933	1586	1300	1282	929	660	456	307	206	-1.5	1.6	0.0	-8.1	-25.6	-57.09	0.202	24
	UMC	L223R3V	R23966 **	55	Full Metal Jacket	7 1/2	200	3240	2759	2325	1933	1586	1300	1282	929	660	456	307	206	-1.5	1.6	0.0	-8.1	-25.6	-57.09	0.202	24
224 Remington	UMC	L223R3A	23683 ***	55	Full Metal Jacket	7 1/2	200	3240	2759	2325	1933	1586	1300	1282	929	660	456	307	206	-1.5	1.6	0.0	-8.1	-25.6	-57.09	0.202	24
	UMC	L223R3BC	23897 ****	55	Full Metal Jacket	7 1/2	200	3240	2759	2325	1933	1586	1300	1282	929	660	456	307	206	-1.5	1.6	0.0	-8.1	-25.6	-57.09	0.202	24
225 Remington	UMC	L223R3BP	23895 #	55	Full Metal Jacket	7 1/2	200	3240	2759	2325	1933	1586	1300	1282	929	660	456	307	206	-1.5	1.6	0.0	-8.1	-25.6	-57.09	0.202	24

50 CT = * | 100 CT = ** | 225 CT = *** | 500 CT = **** | 650 CT = ***** | 1000 CT = S | Vented Barrel = # | BC = BALLISTIC COEFFICIENT | BL = Barrel Length | Sight Height for all Cartridges except Core-Lokt and Ultimate Defense (2.5 inches) is 1.5 inches.

CARTRIDGE	LINE	INDEX	ORDER	WT (GR)	BULLET STYLE	PRIMER	ZERO (YDS)	VELOCITY (FPS) IN YARDS					ENERGY (FT-LB) IN YARDS					TRAJECTORY (INCHES) IN YARDS					BC	BL			
								MUZ	100	200	300	400	500	MUZ	100	200	300	400	500	MUZ	100	200			300	400	500
225 Remington	UMC	L223R7	23748 *	45	Jacketed Hollow Point	7 1/2	200	3550	2953	2430	1963	1559	1241	1259	871	590	385	243	154	-1.5	1.3	0.0	-7.3	-23.7	-54.7	0.173	24
	UMC	L223R7V	23906 **	45	Jacketed Hollow Point	7 1/2	200	3550	2953	2430	1963	1559	1241	1259	871	590	385	243	154	-1.5	1.3	0.0	-7.3	-23.7	-54.7	0.173	24
226 Remington	UMC	L223R7A	23715 ***	45	Jacketed Hollow Point	7 1/2	200	3550	2953	2430	1963	1559	1241	1259	871	590	385	243	154	-1.5	1.3	0.0	-7.3	-23.7	-54.7	0.173	24
	UMC	L223R8	23812 *	50	Jacketed Hollow Point	7 1/2	200	3425	2899	2430	2007	1633	1324	1302	933	655	447	296	195	-1.5	1.3	0.0	-7.3	-23.4	-52.67	0.192	24
227 Remington	UMC	L223R8V	23908 **	50	Jacketed Hollow Point	7 1/2	200	3425	2899	2430	2007	1633	1324	1302	933	655	447	296	195	-1.5	1.3	0.0	-7.3	-23.4	-52.67	0.192	24
	Premier AccuTip-V	PRA223RB	29184	50	AccuTip-V	7 1/2	200	3410	2989	2605	2252	1928	1635	1291	992	753	563	413	297	-1.5	1.2	0.0	-6.4	-19.7	-42.38	0.242	24
228 Remington	Premier AccuTip-V	PRA223RC	29192	55	AccuTip-V	7 1/2	200	3240	2854	2500	2172	1871	1598	1282	995	763	576	427	312	-1.5	1.4	0.0	-7.0	-21.4	-45.87	0.255	24
	Core-Lokt	R223R8	22111	62	Core-Lokt Ultra Bonded PSP	7 1/2	200	3100	2700	2328	1986	1678	1411	1323	1004	746	543	388	274	-2.5	1.2	0.0	-7.6	-24.2	-53.2	0.234	24
229 Remington	High Performance Rifle	R223R1	28399	55	Pointed Soft Point	7 1/2	200	3240	2747	2304	1904	1554	1270	1282	921	648	443	295	197	-1.5	1.6	0.0	-8.2	-26.2	-58.69	0.197	24
	UMC Leadless	LL223R5B	R21420	55	Lead-Free Jacketed, Powdered Metal Core	205NX Catalyst	200	3190	2714	2285	1898	1557	1281	1241	889	638	440	296	200	-1.5	1.6	0.0	-8.4	-26.5	-59.2	0.2	24
230 Remington	Ultimate Defense Rifle Bonded	RD223R4	22107	62	Core-Lokt Ultra Bonded PSP	7 1/2	200	3100	2700	2328	1986	1678	1411	1323	1004	746	543	388	274	-2.5	1.2	0.0	-7.6	-24.2	-53.2	0.234	24
	Premier Match	RM223R2R	27682	52	Hollow Point Match	7 1/2	200	3200	2815	2461	2134	1833	1563	1182	915	699	526	388	282	-2.5	1.0	0.0	-6.7	-21.2	-46.1	0.253	24
231 Remington	Premier Match	R223R6	22106	62	Hollow Point Match	7 1/2	200	3025	2572	2162	1792	1471	1218	1260	911	644	442	298	204	-2.5	1.4	0.0	-8.9	-28.9	-65.03	0.205	24
	Premier Match	RM223R1	27680	69	Matching OTMHTT	7 1/2	200	3000	2720	2456	2208	1974	1756	1379	1133	924	747	597	472	-2.5	1.1	0.0	-6.9	-21.0	-43.97	0.336	24
232 Remington	Premier Match	RM223R3	27686	77	Matching OTMHTT	7 1/2	200	2790	2541	2305	2082	1872	1677	1331	1104	909	741	599	481	-2.5	1.5	0.0	-8.0	-24.1	-50.1	0.362	24

50 CT = * | 100 CT = ** | 225 CT = *** | 500 CT = **** | 650 CT = ***** | 1000 CT = S | Vented Barrel = # | BC = BALLISTIC COEFFICIENT | BL = Barrel Length | Sight Height for all Cartridges except Core-Lokt and Ultimate Defense (2.5 inches) is 1.5 inches.

CARTRIDGE	LINE	INDEX	ORDER	WT (GR)	BULLET STYLE	PRIMER	ZERO (YDS)	VELOCITY (FPS) IN YARDS					ENERGY (FT-LB) IN YARDS					TRAJECTORY (INCHES) IN YARDS					BC	BL			
								MUZ	100	200	300	400	500	MUZ	100	200	300	400	500	MUZ	100	200			300	400	500
								6.8 Remington SPC	UMC	L68R2	24035	115	Full Metal Jacket	9 1/2	200	2625	2329	2053	1797	1565	1363	1759			1395	1076	825
	Premier Match	RM68R1	27676	115	Matching OTM	9 1/2	200	2625	2365	2119	1889	1676	1484	1759	1428	1147	911	717	562	-2.5	1.9	0.0	-9.7	-29.1	-60.95	0.333	24
	Core-Lokt Tipped	R1270WA	29019	130	Core-Lokt Tipped	9 1/2	200	3080	2864	2658	2461	2273	2093	2738	2367	2039	1748	1491	1264	-1.5	1.4	0.0	-6.3	-18.4	-37.2	0.447	24
	Core-Lokt	R270W1	21325	100	Core-Lokt PSP	9 1/2	200	3320	2923	2559	2223	1914	--	2248	1897	1455	1098	813	--	-1.5	1.3	0.0	-6.6	-20.4	--	0.252	24
	Core-Lokt	R270W2	27808	130	Core-Lokt PSP	9 1/2	200	3060	2776	2509	2258	2021	1799	2702	2224	1817	1471	1179	935	-1.5	1.5	0.0	-7.1	-21.0	-43.42	0.336	24
270 Win	Premier Scirocco Bonded	PRSC270WA	29322	130	Swift Scirocco Bonded	9 1/2	200	3060	2838	2627	2425	2232	2049	2704	2326	1992	1698	1439	1212	-1.5	1.4	0.0	-6.5	-18.8	-38.2	0.433	24
	Premier Cut (Copper Tipped)	RCT270W2	R22337	130	Copper-tipped BT	9 1/2	200	3010	2782	2566	2361	2164	1977	2614	2234	1901	1608	1352	1128	-1.5	1.5	0.0	-6.8	-19.8	-40.3	0.418	24
	Core-Lokt Copper	RCC270W2	R27855	130	Core-Lokt Copper	9 1/2	200	3060	2729	2422	2134	1868	1625	3118	2481	1953	1517	1162	879	-1.5	1.6	0.0	-7.6	-22.8	-48.1	0.287	24
	Premier Long Range	RLR270W	R21342	150	Speer Impact	9 1/2	200	2850	2662	2481	2308	2141	1982	2704	2359	2050	1774	1527	1308	-1.5	1.7	0.0	-7.4	-21.3	-42.8	0.489	24
	Core-Lokt	R270W4	27810	150	Core-Lokt Soft Point	9 1/2	200	2850	2504	2183	1887	1619	1386	2705	2088	1587	1186	873	640	-1.5	2.0	0.0	-9.4	-28.6	-61.23	0.261	24
270 WSM	Core-Lokt	R270WSM1	28940	130	Core-Lokt PSP	9 1/2 M	200	3285	2986	2707	2444	2196	1963	3114	2573	2114	1724	1392	1112	-1.5	1.2	0.0	-6.0	-17.8	-36.83	0.336	24
	Core-Lokt Tipped	R1280RA	29020	140	Core-Lokt Tipped	9 1/2	200	3020	2823	2635	2455	2282	2115	2835	2478	2159	1873	1618	1391	-1.5	1.4	0.0	-6.4	-18.7	-37.6	0.486	24
280 Remington	Core-Lokt	R280R3	28313	140	Core-Lokt PSP	9 1/2	200	3000	2757	2528	2309	2102	1905	2797	2363	1986	1657	1373	1128	-1.5	1.5	0.0	-7.0	-20.5	-41.97	0.39	24
	Core-Lokt	R280R1	29069	150	Core-Lokt PSP	9 1/2	200	2890	2624	2373	2136	1914	1706	2781	2293	1876	1520	1219	970	-1.5	1.8	0.0	-8.0	-23.6	-48.77	0.346	24
	Core-Lokt	R280R2	28417	165	Core-Lokt Soft Point	9 1/2	200	2820	2509	2219	1949	1700	1478	2913	2307	1804	1391	1059	800	-1.5	2.0	0.0	-9.1	-27.5	-57.91	0.29	24
	High Performance Rifle	R7MM082	28827	120	Hollow Point	9 1/2	200	3000	2725	2467	2223	1992	1777	2398	1979	1621	1316	1058	842	-1.5	1.6	0.0	-7.3	-21.7	-44.93	0.343	24
7MM-08 Remington	Premier Cut (Copper Tipped)	RCT7MM081	R22339	140	Copper-tipped BT	9 1/2	200	2870	2655	2451	2255	2068	1891	2560	2191	1866	1580	1329	1111	-1.5	1.7	0.0	-7.5	-21.9	-44.4	0.429	24
	Core-Lokt Tipped	R7MM081	R20039	140	Core-Lokt Tipped	9 1/2	200	2860	2670	2488	2314	2146	1985	2542	2216	1924	1664	1431	1225	-1.5	1.7	0.0	-7.3	-21.1	-42.5	0.486	24
	Core-Lokt	R7MM081	21337	140	Core-Lokt PSP	9 1/2	200	2860	2625	2402	2189	1988	1798	2542	2142	1793	1490	1228	1005	-1.5	1.8	0.0	-7.8	-22.9	-46.85	0.39	24

50 CT = * | 100 CT = ** | 225 CT = *** | 500 CT = **** | 650 CT = ***** | 1000 CT = S | Vented Barrel = # | BC = BALLISTIC COEFFICIENT | BL = Barrel Length | Sight Height for all Cartridges except Core-Lokt and Ultimate Defense (2.5 inches) is 1.5 inches.

CARTRIDGE	LINE	INDEX	ORDER	WT (GR)	BULLET STYLE	PRIMER	ZERO (YDS)	VELOCITY (FPS) IN YARDS					ENERGY (FT-LB) IN YARDS					TRAJECTORY (INCHES) IN YARDS					BC	BL			
								MUZ	100	200	300	400	500	MUZ	100	200	300	400	500	MUZ	100	200			300	400	500
								Core-Lokt	R7MM4	28821	140	Core-Lokt PSP	9 1/2 M	200	3175	2923	2694	2458	2243	2039	3133	2655			2240	1878	1564
Core-Lokt Tipped	R7MMRB	29021	150	Core-Lokt Tipped	9 1/2 M	200	3130	2945	2767	2597	2432	2274	3262	2888	2550	2245	1970	1722	-1.5	1.3	0.0	-5.8	-16.8	-33.6	0.53	24	
Core-Lokt	R7MM2	29487	150	Core-Lokt PSP	9 1/2 M	200	3110	2831	2568	2321	2087	1867	3221	2669	2197	1793	1450	1161	-1.5	1.4	0.0	-6.7	-19.9	-41.12	0.346	24	
Premier Scirocco Bonded	PRSC7MMB	29316	150	Swift Scirocco Bonded	9 1/2 M	200	3110	2927	2751	2582	2419	2262	3222	2894	2521	2221	1949	1705	-1.5	1.3	0.0	-5.9	-17.0	-34	0.533	24	
Premier Cut (Copper Tipped)	RCT7MMB	R22341	150	Copper-Tipped BT	9 1/2 M	200	3050	2839	2638	2445	2261	2084	3099	2685	2318	1992	1702	1447	-1.5	1.4	0.0	-6.4	-18.7	-37.7	0.455	24	
Premier Long Range	RLR7MMR	R21343	175	Speer Impact	9 1/2 M	200	2870	2702	2542	2387	2237	2093	3197	2837	2510	2213	1945	1702	-1.5	1.6	0.0	-7.0	-20.1	-40.2	0.549	24	
Core-Lokt	R7MM3	27814	175	Core-Lokt PSP	9 1/2 M	200	2860	2645	2440	2244	2057	1879	3178	2718	2312	1956	1643	1372	-1.5	1.7	0.0	-7.6	-22.1	-44.87	0.427	24	
Core-Lokt	R7MSR1	29031	140	Core-Lokt PSP	9 1/2	200	2660	2435	2221	2018	1827	1648	2199	1843	1533	1266	1037	844	-1.5	2.2	0.0	-9.3	-27.1	-55.36	0.39	24	
Core-Lokt	R7X641	29130	140	Core-Lokt PSP	9 1/2	200	2950	2710	2483	2266	2061	1867	2705	2283	1916	1597	1320	1083	-1.5	1.6	0.0	-7.3	-21.3	-43.62	0.39	24	
Core-Lokt	PR7SM2	27874	150	Core-Lokt PSP	9 1/2 M	200	3110	2831	2568	2321	2087	1867	3221	2669	2197	1793	1450	1161	-1.5	1.4	0.0	-6.7	-19.9	-41.12	0.346	24	
Core-Lokt	PR7SM2	27874	150	Core-Lokt PSP	9 1/2 M	200	3110	2831	2568	2321	2087	1867	3221	2669	2197	1793	1450	1161	-1.5	1.4	0.0	-6.7	-19.9	-41.12	0.346	24	
Premier Scirocco Bonded	PRSC7MM1	29335	150	Swift Scirocco Bonded	9 1/2 M	200	3325	3132	2948	2771	2602	2438	3683	3269	2896	2559	2255	1980	-1.5	1.0	0.0	-5.0	-14.6	-29.3	0.533	24	
Core-Lokt	R7RJM01	27759	150	Core-Lokt PSP	9 1/2 M	200	3230	2943	2674	2421	2181	1955	3476	2886	2382	1952	1585	1274	-1.5	1.2	0.0	-6.1	-18.2	-37.67	0.346	24	
Core-Lokt Tipped	R7MMPRC	R20045	175	Core-Lokt Tipped	9 1/2	200																				24	
Premier Long Range	RLR7MMPRC	R28829	175	Speer Impact	9 1/2	200	3000	2826	2659	2498	2343	2193	2797	2483	2198	1940	1706	1495	-1.5	1.4	0.0	-6.4	-18.3	-36.5	0.549	24	
UMC	L30GR1	23712	110	Full Metal Jacket	6 1/2	100	1990	1566	1235	1034	--	--	967	599	372	261	--	--	--	-0.9	0.0	-13.6	-50.0	--	--	0.166	20
Core-Lokt	R30GAR	28322	110	Core-Lokt Soft Point	6 1/2	100	1990	1566	1235	1034	--	--	967	599	372	261	--	--	--	-0.9	0.0	-13.6	-50.0	--	--	0.166	20

50 CT = * | 100 CT = ** | 225 CT = *** | 500 CT = **** | 650 CT = # | 1000 CT = \$ | Vented Barrel = # # BC = BALLISTIC COEFFICIENT | BL = Barrel Length | Sight Height for all Cartridges except Core-Lokt and Ultimate Defense (2.5 inches) is 1.5 inches.

CARTRIDGE	LINE	INDEX	ORDER	WT (GR)	BULLET STYLE	PRIMER	ZERO (YDS)	VELOCITY (FPS) IN YARDS					ENERGY (FT-LB) IN YARDS					TRAJECTORY (INCHES) IN YARDS					BC	BL			
								MUZ	100	200	300	400	500	MUZ	100	200	300	400	500	MUZ	100	200			300	400	500
								UMC	L300AAC1	21421	120	Open Tip Flat Base	7 1/2	100	2200	1937	1695	1479	1294	--	1290	1000			766	583	446
Core-Lokt Copper	RCC300AAC1	R27857	120	Core-Lokt Copper	7 1/2	100	2100	1800	1532	1307	--	--	1469	1079	782	569	--	--	-2.5	0.0	-8.3	-31.6	--	--	0.251	16	
Premier Match	RM300AAC6	21503	125	MatchKing OTM	7 1/2	100	2215	1977	1755	1552	1373	--	1362	1084	854	669	523	--	-2.5	0.0	-6.4	-24.2	-56.5	--	0.330	16	
UMC	L300AAC2	26854*	150	Full Metal Jacket	7 1/2	100	1905	1721	1551	1398	--	--	1209	986	801	651	--	--	-2.5	0.0	-9.3	-33.1	--	--	0.390	16	
UMC	L300AAC2V	26855**	150	Full Metal Jacket	7 1/2	100	1905	1721	1551	1398	--	--	1209	986	801	651	--	--	-2.5	0.0	-9.3	-33.1	--	--	0.390	16	
UMC	L300AAC2BC	26857 S	150	Full Metal Jacket	7 1/2	100	1905	1721	1551	1398	--	--	1209	986	801	651	--	--	-2.5	0.0	-9.3	-33.1	--	--	0.390	16	
UMC	L300AAC2BP	20107***	150	Full Metal Jacket	7 1/2	100	1905	1721	1551	1398	--	--	1209	986	801	651	--	--	-2.5	0.0	-9.3	-33.1	--	--	0.390	16	
SUBSONIC	S300AAC4	28430	220	OTFB	7 1/2	100	940	917	896	876	857	839	432	411	392	375	359	344	344	-2.5	0.0	-38.2	-119.7	--	--	0.680	16
UMC	L300AAC4	21422*	220	OTFB	7 1/2	100	940	917	896	876	857	839	432	411	392	375	359	344	344	-2.5	0.0	-38.2	-119.7	--	--	0.680	16
UMC	L300AAC4V	24026**	220	OTFB	7 1/2	100	940	917	896	876	857	839	432	411	392	375	359	344	344	-2.5	0.0	-38.2	-119.7	--	--	0.680	16
UMC	L300AAC4BC	20111 S	220	OTFB	7 1/2	100	940	917	896	876	857	839	432	411	392	375	359	344	344	-2.5	0.0	-38.2	-119.7	--	--	0.680	16
UMC	L300AAC4B	20109***	220	OTFB	7 1/2	100	940	917	896	876	857	839	432	411	392	375	359	344	344	-2.5	0.0	-38.2	-119.7	--	--	0.680	16
300 Hammer	Core-Lokt	R21351	125	Core-Lokt PSP	--	--	--	--	--	--	--	--	--	--	--	--	--	--	--	--	--	--	--	--	--	--	--
30 Remington AR	Core-Lokt	R30RAR2	150	Core-Lokt PSP	7 1/2	200	2575	2302	2047	1812	1591	--	2208	1765	1395	1093	843	--	-2.5	0.0	zero	-10.4	-31.5	--	0.314	24	
Core-Lokt	R30301	27818	150	Core-Lokt Soft Point	9 1/2	100	2390	1973	1606	1304	--	--	1902	1297	859	567	--	-0.9	0.0	-8.2	-30.0	--	--	--	0.193	24	
Core-Lokt	RL30301	27644	125	Core-Lokt Soft Point	9 1/2	100	2175	1820	1508	1255	1082	975	1313	919	631	437	--	-0.9	0.0	-9.1	-33.7	--	--	--	0.215	24	
Core-Lokt	R30302	27820	170	Core-Lokt Soft Point	9 1/2	100	2200	1895	1619	1380	--	--	1827	1355	989	719	--	-0.9	0.0	-8.9	-31.1	--	--	--	0.254	24	
Core-Lokt Tipped Lever Gun	RT3030A	R21428	150	Core-Lokt Tipped	--	--	2390	--	--	--	--	--	--	--	--	--	--	--	--	--	--	--	--	--	--	--	
Core-Lokt	R30303	21395	170	Core-Lokt Hollow Point	9 1/2	100	2200	1895	1619	1380	--	--	1827	1355	989	719	--	-0.9	0.0	-8.9	-31.1	--	--	--	0.254	24	
Core-Lokt	R30402	28345	180	Core-Lokt PSP	9 1/2	200	2430	2213	2006	1815	1632	1467	2360	1956	1609	1316	1064	860	-1.5	2.8	0.0	-11.5	-33.6	-68.8	0.383	24	

50 CT = * | 100 CT = ** | 225 CT = *** | 500 CT = **** | 650 CT = # | 1000 CT = \$ | Vented Barrel = # # BC = BALLISTIC COEFFICIENT | BL = Barrel Length | Sight Height for all Cartridges except Core-Lokt and Ultimate Defense (2.5 inches) is 1.5 inches.

CARTRIDGE	LINE	INDEX	ORDER	WT (GR)	BULLET STYLE	PRIMER	ZERO (YDS)	VELOCITY (FPS) IN YARDS					ENERGY (FT-LB) IN YARDS					TRAJECTORY (INCHES) IN YARDS					BC	BL			
								MUZ	100	200	300	400	500	MUZ	100	200	300	400	500	MUZ	100	200			300	400	500
								30-06 Sprng	Core-Lokt	R30061	21401	125	Core-Lokt PSP	9 1/2	200	3140	2780	2448	2139	1854	1596	2736			2145	1663	1270
UMC	L30062	27622	150	Full Metal Jacket	9 1/2	200	2910	2690	2480	2280	2089	1908	1908	2820	2409	2048	1731	1453	1212	-1.5	1.7	0.0	-7.3	-21.3	-43.4	0.422	24
Core-Lokt Tipped	RT3006A	29027	150	Core-Lokt Tipped	9 1/2	200	2930	2705	2491	2287	2093	1909	1909	2859	2437	2067	1742	1459	1213	-1.5	1.6	0.0	-7.2	-21.2	-43.0	0.415	24
Core-Lokt	R30062	27826	150	Core-Lokt PSP	9 1/2	200	2910	2617	2342	2083	1842	1621	1621	2820	2280	1826	1445	1130	875	-1.5	1.8	0.0	-8.2	-24.4	-50.9	0.314	24
Premier Scirocco Bonded	PRSC3006C	29318	150	Swift Scirocco Bonded	9 1/2 M	200	2910	2696	2492	2298	2112	1934	1934	2821	2422	2070	1759	1485	1247	-1.5	1.7	0.0	-7.3	-21.1	-42.8	0.435	24
Core-Lokt Copper	RCC30062	R27853	150	Core-Lokt Copper	9 1/2	200	2910	2580	2273	1987	1725	1491	1491	2820	2217	1721	1315	991	740	-1.5	1.9	0.0	-8.6	-26.2	-55.4	0.278	24
Cut (Copper Tipped)	RCT3006B	R22343	150	Copper-tipped BT	9 1/2	200	2930	2707	2495	2292	2099	1915	1915	2860	2441	2073	1750	1467	1222	-1.5	1.6	0.0	-7.2	-21.1	-42.9	0.418	24
Core-Lokt Tipped	RT3006B	29035	165	Core-Lokt Tipped	9 1/2	200	2820	2616	2421	2234	2056	1886	1886	2913	2507	2147	1829	1548	1303	-1.5	1.8	0.0	-7.7	-22.5	-45.4	0.447	24
Premier Long Range	RLR3006	R21344	172	Speer Impact	9 1/2	200	2825	2650	2481	2319	2162	2012	2012	3048	2681	2351	2053	1785	1545	-1.5	1.7	0.0	-7.4	-21.2	-42.6	0.522	24
Core-Lokt	R3006B	21415	165	Core-Lokt PSP	9 1/2	200	2800	2534	2283	2047	1826	1622	1622	2872	2352	1910	1535	1221	963	-1.5	2.0	0.0	-8.7	-25.7	-53.1	0.339	24
Core-Lokt Tipped	RT3006C	29037	180	Core-Lokt Tipped	9 1/2	200	2745	2558	2378	2206	2041	1883	1883	3011	2615	2260	1945	1664	1417	-1.5	1.9	0.0	-8.1	-23.3	-46.9	0.480	24
Core-Lokt	R30064	21407	180	Core-Lokt Soft Point	9 1/2	200	2700	2348	2023	1727	1467	1252	1252	2913	2203	1636	1192	860	627	-1.5	2.4	0.0	-11.0	-33.8	-72.8	0.248	24
Core-Lokt	R30065	27828	180	Core-Lokt PSP	9 1/2	200	2700	2469	2250	2041	1845	1662	1662	2913	2436	2022	1665	1360	1104	-1.5	2.1	0.0	-9.0	-26.4	-54.0	0.383	24
Premier Scirocco Bonded	PRSC3006B	29328	180	Swift Scirocco Bonded	9 1/2 M	200	2700	2522	2351	2186	2028	1878	1878	2914	2543	2209	1911	1645	1409	-1.5	2.0	0.0	-8.3	-23.9	-47.9	0.500	24
Core-Lokt	R30067	27830	220	Core-Lokt Soft Point	9 1/2	200	2410	2130	1870	1632	1421	1246	1246	2837	2216	1708	1301	987	758	-1.5	3.1	0.0	-13.1	-39.4	-82.9	0.294	24
Core-Lokt	R308V2	21465	150	Core-Lokt PSP	9 1/2	200	2630	2354	2095	1853	1631	1433	1433	2303	1845	1462	1144	886	684	-1.5	2.4	0.0	-10.4	-30.9	-64.6	0.314	24
Core-Lokt	R300W1	29495	150	Core-Lokt PSP	9 1/2 M	200	3290	2950	2634	2340	2065	1813	1813	3605	2897	2311	1823	1420	1094	-1.5	1.3	0.0	-6.3	-19.0	-39.8	0.294	24
Core-Lokt Tipped	RT300WC	R29038	180	Core-Lokt Tipped	9 1/2 M	200	2980	2783	2594	2413	2239	2073	2073	3549	3095	2689	2327	2004	1717	-1.5	1.5	0.0	-6.7	-19.3	-38.9	0.481	24
Premier Scirocco Bonded	PRSC300WB	29330	180	Swift Scirocco Bonded	9 1/2 M	200	2960	2774	2595	2424	2259	2100	2100	3503	3076	2693	2349	2040	1763	-1.5	1.5	0.0	-6.7	-19.3	-38.7	0.507	24

50 CT = * | 100 CT = ** | 225 CT = *** | 500 CT = **** | 650 CT = S | 1000 CT = S | Vented Barrel = # | BC = BALLISTIC COEFFICIENT | BL = Barrel Length | Sight Height for all Cartridges except Core-Lokt and Ultimate Defense (2.5 inches) is 1.5 inches.

CARTRIDGE	LINE	INDEX	ORDER	WT (GR)	BULLET STYLE	PRIMER	ZERO (YDS)	VELOCITY (FPS) IN YARDS					ENERGY (FT-LB) IN YARDS					TRAJECTORY (INCHES) IN YARDS					BC	BL			
								MUZ	100	200	300	400	500	MUZ	100	200	300	400	500	MUZ	100	200			300	400	500
								Core-Lokt Copper	RCC300W2	R27858	180	Core-Lokt Copper	9 1/2 M	200	2850	2574	2314	2070	1841	1630	2705	2206			1784	1427	1129
Core-Lokt PSP	R300W2	29497	180	Core-Lokt PSP	9 1/2 M	200	2960	2715	2484	2263	2054	1857	3501	2946	2465	2047	1687	1379	-1.5	1.6	0.0	-7.3	-21.3	-43.7	0.383	24	
Core-Lokt Tipped	RC1300WC	R22345	180	Copper-tipped BT	9 1/2 M	200	2960	2759	2567	2383	2207	2038	3502	3043	2634	2270	1946	1659	-1.5	1.5	0.0	-6.8	-19.8	-39.9	0.469	24	
Premier Long Range	RLR300W	R21346	190	Speer Impact	9 1/2 M	200	2885	2727	2577	2430	2289	2153	3506	3138	2800	2492	2210	1955	-1.5	1.6	0.0	-6.8	-19.5	-38.9	0.596	24	
Core-Lokt PSP	R300WSM1	29489	150	Core-Lokt PSP	9 1/2 M	200	3320	2977	2660	2364	2087	1830	3671	2952	2356	1861	1451	1116	-1.5	1.2	0.0	-6.2	-18.6	-39.0	0.294	24	
Core-Lokt Tipped	RT300WSM1	29043	150	Core-Lokt Tipped	9 1/2 M	200	3340	3093	2860	2639	2428	2227	3715	3186	2724	2319	1963	1652	-1.5	1.1	0.0	-5.3	-15.7	-31.9	0.415	24	
Premier Scirocco Bonded	PRSC300WSM	29345	180	Swift Scirocco Bonded	9 1/2 M	200	2980	2793	2614	2442	2276	2117	3550	3119	2731	2383	2071	1791	-1.5	1.5	0.0	-6.6	-19.0	-38.1	0.507	24	
Core-Lokt PSP	R308ME1	27848	150	Core-Lokt PSP	9 1/2	200	2725	2275	1871	1519	1239	--	2473	1724	1166	768	511	--	-1.5	2.7	0.0	-12.7	-40.8	--	0.193	24	
UMC	L308W4	23715	150	Full Metal Jacket	9 1/2	200	2810	2595	2389	2193	2007	1830	2629	2242	1901	1602	1341	1115	-1.5	1.8	0.0	-7.9	-23.1	-47.0	0.422	24	
UMC	L308W4B	R23971	150	Full Metal Jacket	9 1/2	200	2810	2595	2389	2193	2007	1830	2629	2242	1901	1602	1341	1115	-1.5	1.8	0.0	-7.9	-23.1	-47.0	0.422	24	
Core-Lokt PSP	R308W1	27842	150	Core-Lokt PSP	9 1/2	200	2820	2532	2262	2009	1774	1560	2648	2136	1704	1344	1048	810	-1.5	2.0	0.0	-8.8	-26.3	-54.8	0.314	24	
Core-Lokt Copper	RCC308W1	R27854	150	Core-Lokt Copper	9 1/2	200	2820	2496	2195	1915	1660	1434	2648	2075	1605	1222	918	685	-1.5	2.1	0.0	-9.3	-28.2	-59.8	0.278	24	
Core-Lokt Tipped	RT308WA	29039	150	Core-Lokt Tipped	9 1/2	200	2840	2620	2410	2210	2019	1839	2686	2285	1934	1626	1358	1126	-1.5	1.8	0.0	-7.8	-22.7	-46.2	0.415	24	
Core-Lokt Tipped	RT308WB	29044	165	Core-Lokt Tipped	9 1/2	200	2700	2501	2311	2129	1956	1792	2670	2292	1957	1661	1401	1176	-1.5	2.0	0.0	-8.6	-24.8	-50.1	0.447	24	
Core-Lokt Tipped	RT308WC	29041	180	Core-Lokt Tipped	9 1/2	200	2640	2457	2282	2113	1952	1799	2785	2413	2080	1785	1523	1293	-1.5	2.1	0.0	-8.8	-25.4	-51.2	0.480	24	
Premier Scirocco Bonded	PRSC308WB	29332	165	Swift Scirocco Bonded	9 1/2 M	200	2680	2493	2314	2143	1979	1823	2631	2277	1962	1682	1434	1217	-1.5	2.1	0.0	-8.6	-24.7	-49.7	0.475	24	
Premier Match	RM308W7	21485	168	MatchKing OTM	9 1/2	200	2680	2494	2315	2143	1979	1823	2679	2319	1999	1713	1461	1240	-1.5	2.1	0.0	-8.6	-24.7	-49.7	0.475	24	
Premier Long Range	RLR308W	R21345	172	Speer Impact	9 1/2	200	2635	2467	2305	2149	1999	1856	2652	2324	2029	1763	1526	1315	-1.5	2.1	0.0	-8.7	-24.9	-49.8	0.522	24	
Premier Match	RM308W8	21486	175	MatchKing OTM	9 1/2	200	2610	2434	2265	2103	1947	1799	2647	2302	1993	1718	1473	1257	-1.5	2.2	0.0	-9.0	-25.8	-51.9	0.496	24	

50 CT = * | 100 CT = ** | 225 CT = *** | 500 CT = **** | 650 CT = S | 1000 CT = S | Vented Barrel = # | BC = BALLISTIC COEFFICIENT | BL = Barrel Length | Sight Height for all Cartridges except Core-Lokt and Ultimate Defense (2.5 inches) is 1.5 inches.

CARTRIDGE	LINE	INDEX	ORDER	WT (GR)	BULLET STYLE	PRIMER	ZERO (YDS)	VELOCITY (FPS) IN YARDS					ENERGY (FT-LB) IN YARDS					TRAJECTORY (INCHES) IN YARDS					BC	BL			
								MUZ	100	200	300	400	500	MUZ	100	200	300	400	500	MUZ	100	200			300	400	500
								High Performance Rifle	R308W4	R21473	180	Pointed Soft Point Boattail	9 1/2	200	2615	2395	2185	1985	1797	1622	2735	2293			1907	1575	1291
Core-Lokt	R308W2	27844	180	Core-Lokt Soft Point	9 1/2	200	2620	2274	1956	1667	1415	--	2743	2067	1528	1110	800	--	-1.5	2.6	0.0	-11.8	-36.3	--	0.248	24	
Core-Lokt	R308W3	21479	180	Core-Lokt PSP	9 1/2	200	2620	2393	2177	1973	1781	1603	2743	2288	1895	1556	1268	1027	-1.5	2.3	0.0	-9.7	-28.3	-57.9	0.383	24	
300 Wby Mag	Core-Lokt	R300WB1	180	Core-Lokt PSP	9 1/2 M	200	3120	2866	2627	2399	2184	1979	3890	3283	2757	2301	1905	1565	-1.5	1.4	0.0	-6.4	-18.9	-38.7	0.383	24	
300 PRC	Premier Long Range	RLR300PRC	215	Speer Impact	9 1/2 M	200	2850	2706	2567	2432	2301	2174	3877	3496	3145	2823	2527	2256	-1.5	1.6	0.0	-6.9	-19.7	-39.0	0.643	24	
Core-Lokt Tipped	RT300PRC	R20047	210	Core-Lokt Tipped	9 1/2 M	200	--	--	--	--	--	--	--	--	--	--	--	--	--	--	--	--	--	--	24		
303 British	UMC	L303B1	174	Full Metal Jacket	9 1/2	100	2475	2209	1960	1730	1521	1339	2366	1886	1484	1156	893	692	-1.5	0.0	-5.7	-20.4	-46.9	-88.4	0.315	24	
Core-Lokt	R303B1	21471	180	Core-Lokt Soft Point	9 1/2	100	2460	2125	1819	1544	1313	--	2418	1805	1322	953	689	--	-1.5	0.0	-6.3	-23.1	-54.7	--	0.247	24	
7.62 x 39	Core-Lokt	R762391	125	Core-Lokt PSP	9 1/2	100	2365	2061	1782	1551	--	--	1552	1179	881	651	--	--	-2.0	0.0	-6.2	-23.5	--	--	0.267	20	
300 Remington SA Ultra Mag	Core-Lokt	PR300SM2	165	Core-Lokt PSP	9 1/2 M	200	3075	2792	2527	2277	2041	1820	3464	2856	2339	1899	1525	1213	-1.5	1.5	0.0	-7.0	-20.6	-42.7	0.339	24	
300 Remington Ultra Mag	Premier Scirocco Bonded	PR300UM5	150	Swift Scirocco Bonded	9 1/2 M	200	3450	3208	2980	2763	2556	2358	3965	3429	2958	2542	2176	1853	-1.5	0.9	0.0	-4.9	-14.3	-29.1	0.435	24	
Core-Lokt	R300UM1	27641	180	Core-Lokt PSP	9 1/2 M	200	3270	2975	2698	2438	2193	1962	4273	3536	2910	2376	1922	1538	-1.5	1.2	0.0	-6.0	-17.9	-37.0	0.339	24	
Core-Lokt Tipped	RT300UM	R29045	180	Core-Lokt Tipped	9 1/2 M	200	3150	2946	2750	2563	2383	2210	3966	3467	3022	2624	2269	1952	-1.5	1.3	0.0	-5.9	-17.0	-34.3	0.480	24	
Premier Long Range	RLR300UM	R21347	190	Speer Impact	9 1/2 M	200	3100	2936	2778	2626	2478	2336	4054	3636	3256	2908	2591	2301	-1.5	1.3	0.0	-5.8	-16.6	-33.1	0.596	24	
Premier Scirocco Bonded	PR300UM3	27936	180	Swift Scirocco Bonded	9 1/2 M	200	3250	3048	2856	2672	2495	2325	4182	3679	3229	2825	2462	2137	-1.5	1.1	0.0	-5.4	-15.7	-31.5	0.500	24	
High Performance Rifle	R32201	28410	100	Lead	6 1/2	100	1210	1021	913	--	--	--	325	232	185	--	--	--	-0.9	0.0	-32.3	--	--	--	0.166	24	
Core-Lokt	R32WS2	21489	170	Core-Lokt Soft Point	9 1/2	100	2250	1922	1627	1373	--	--	1911	1394	999	712	--	--	-0.9	0.0	-8.6	-30.5	--	--	0.239	24	
Core-Lokt Tipped Lever Gun	RT32WSA	R21435	170	Core-Lokt Tipped	--	--	2250	--	--	--	--	--	--	--	--	--	--	--	--	--	--	--	--	--	--	--	

50 CT = * | 100 CT = ** | 225 CT = *** | 500 CT = **** | 650 CT = ***** | 1000 CT = S | Vented Barrel = # | BC = BALLISTIC COEFFICIENT | BL = Barrel Length | Sight Height for all Cartridges except Core-Lokt and Ultimate Defense (2.5 inches) is 1.5 inches.

CARTRIDGE	LINE	INDEX	ORDER	WT (GR)	BULLET STYLE	PRIMER	ZERO (YDS)	VELOCITY (FPS) IN YARDS					ENERGY (FT-LB) IN YARDS					TRAJECTORY (INCHES) IN YARDS					BC	BL						
								MUZ	100	200	300	400	500	MUZ	100	200	300	400	500	MUZ	100	200			300	400	500			
338 Marlin Express	High Performance Rifle	R338ME1	22184	250	Soft Point	9 1/2	200	2215	1946	1698	1477	1289	--	--	2723	2101	1601	1211	922	--	--	-1.5	3.9	0.0	-16.0	-48.0	--	0.291	24	
338 Win Mag	Core-Lokt	R338W1	22189	225	Core-Lokt PSP	9 1/2 M	200	2780	2572	2374	2184	2004	1832	2005	3860	3305	2815	2384	2005	1677	--	--	-1.5	1.9	0.0	-8.1	-23.4	-47.5	0.435	24
338 Remington Ultra Magnum	Core-Lokt	R338W2	22191	250	Core-Lokt PSP	9 1/2 M	200	2660	2456	2261	2075	1898	1731	1999	3927	3348	2837	2389	1999	1663	--	--	-1.5	2.1	0.0	-9.0	-26.0	-52.7	0.431	24
35 Remington	Core-Lokt	R35R1	21491	150	Core-Lokt PSP	9 1/2	100	2300	1874	1506	1218	--	--	--	1762	1169	755	494	--	--	--	-1.5	0.0	-8.6	-32.6	--	--	0.184	24	
35 Whelen	Core-Lokt	R35WH1	21495	200	Core-Lokt PSP	9 1/2 M	200	2675	2378	2100	1842	1607	1400	1507	3177	2511	1959	1507	1147	870	--	--	-1.5	2.3	0.0	-10.3	-30.9	-65.0	0.294	24
350 Legend	Core-Lokt	R350L1	20012	180	Core-Lokt Soft Point	7 1/2	100	2100	1793	1520	1292	1123.00	1013.00	924	1762	1284	924	668	504.00	410.00	--	--	-1.5	0.0	-9.4	-34.1	--	0.245	24	
360 BHRM	Core-Lokt	R360BH4	R27742	180	Core-Lokt Soft Point	9 1/2	100	2400	1911	1494	1181	--	--	--	2302	1459	891	557	--	--	--	-1.5	0.0	-8.2	-32.3	--	0.163	20		
375 H&H Mag	Core-Lokt	R375M1	29097	270	Core-Lokt Soft Point	9 1/2 M	200	2180	1768	1419	1160	--	--	--	2108	1388	894	597	--	--	--	-1.5	0.0	-9.8	-37.1	--	0.184	20		
375 Remington Ultra Magnum	Core-Lokt Tipped Lever Gun	RT375RA	R21429	200	Core-Lokt Tipped	--	--	2080	--	--	--	--	--	--	2302	1626	1120	764	--	--	--	-1.5	0.0	-7.2	-26.9	--	0.212	20		
400 Legend	Core-Lokt	R21307	210	210	Core-Lokt PSP	--	--	--	--	--	--	--	--	--	--	--	--	--	--	--	--	--	--	--	--	--	--	--	--	

50 CT = * | 100 CT = ** | 225 CT = *** | 500 CT = **** | 650 CT = ***** | 1000 CT = S | Vented Barrel = # | BC = BALLISTIC COEFFICIENT | BL = Barrel Length | Sight Height for all Cartridges except Core-Lokt and Ultimate Defense (2.5 inches) is 1.5 inches.

CARTRIDGE	LINE	INDEX	ORDER	WT (GR)	BULLET STYLE	PRIMER	ZERO (YDS)	VELOCITY (FPS) IN YARDS					ENERGY (FT-LB) IN YARDS					TRAJECTORY (INCHES) IN YARDS					BC	BL				
								MUZ	100	200	300	400	500	MUZ	100	200	300	400	500	MUZ	100	200			300	400	500	
444 Marlin	Core-Lokt	R444M	29475	240	Core-Lokt Soft Point	9 1/2	100	2350	1816	1376	1087	--	--	--	2942	1758	1009	630	--	--	--	-0.9	0.0	-10.0	-38.5	--	0.146	24
45-70 Govt	Core-Lokt	R4570G	29473	405	Core-Lokt Soft Point T1	9 1/2	100	1330	1169	1056	978	--	--	--	1590	1228	1002	860	--	--	--	-0.9	0.0	-24.5	-80.2	--	0.281	24
450 Bushmaster	Core-Lokt Tipped Lever Gun	RT4570GA	R21430	300	Core-Lokt Tipped	--	--	2350	--	--	--	--	--	--	2303	1726	1318	1057	--	--	--	-0.9	0.0	-17.3	-58.3	--	0.281	24
	High Performance Rifle	R4570L1	21463	300	Semi-Jacketed Hollow Point T1	9 1/2	100	1900	1574	1304	1111	--	--	--	2405	1651	1134	823	--	--	--	-0.9	0.0	-13.3	-47.1	--	0.213	24
	Core-Lokt	R450B1	27941	260	Core-Lokt PSP	7 1/2	100	2150	1688	1315	1072	--	--	--	2668	1645	998	663	--	--	--	-1.5	0.0	-11.0	-42.3	--	0.161	24
	UMC	L450B1	23661	260	Full Metal Jacket	7 1/2	100	2040	1651	1330	1106	--	--	--	2402	1574	1021	706	--	--	--	-2.5	0.0	-10.5	-40.8	--	0.186	24
	Premier AccuTip	PR450B1	27943	260	AccuTip	7 1/2	100	2130	1620	1231	1012	--	--	--	2613	1516	875	591	--	--	--	-2.5	0.0	-11.1	-45.2	--	0.144	24

Handgun

50 CT = * | 100 CT = ** | 225 CT = *** | 500 CT = **** | 650 CT = ***** | 1000 CT = S | Vented Barrel = #
 BC = BALLISTIC COEFFICIENT | BL = BARREL LENGTH | * Ammunition with the "P" on the case headstamp is loaded to a higher pressure. Use only in firearms designated for this cartridge and so recommended by the manufacturer.

CARTRIDGE	LINE	INDEX	ORDER	WT (GR)	BULLET STYLE	PRIMER	SIGHT HEIGHT (Inches)	ZERO (Yds)	VELOCITY (FPS) in Yards			ENERGY (FT-LB) in Yards			TRAJECTORY (Ins) in Yards			BC	BL
									MUZ	25	50	MUZ	25	50	MUZ	25	50		
25 Auto (6.35mm Browning)	UMC	L25AP	23716	50	Full Metal Jacket	1 1/2	0.9	25	760	733	707	64	60	56	0.0	-3.2	0.088	2	
30 Super Carry	UMC	L30SC	R20015	100	Full Metal Jacket	1 1/2	0.9	25	1250	1185	1129	347	312	283	-0.7	-2.9	0.165	4	
32 S&W	HTP High Terminal Performance WheelGun	RTP30SC	R20019	100	Jacketed Hollow Point	1 1/2	0.9	25	1235	1170	1115	339	304	276	-0.7	-3.0	0.165	4	
32 S&W Long	Performance WheelGun	RPW32SW	22206	88	Lead Round Nose	1 1/2	0.9	25	680	662	644	90	86	81	0.0	-4.1	0.114	3##	
	Performance WheelGun	RPW32SWL	22210	98	Lead Round Nose	1 1/2	0.9	25	705	687	669	108	103	97	0.0	-3.7	0.119	4##	

50 CT = * | 100 CT = ** | 225 CT = *** | 500 CT = **** | 650 CT = ***** | 1000 CT = S | Vented Barrel = # | BC = BALLISTIC COEFFICIENT | BL = Barrel Length | Sight Height for all Cartridges except Core-Lokt and Ultimate Defense (2.5 inches) is 1.5 inches.

CARTRIDGE	LINE	INDEX	ORDER	WT (GR)	BULLET STYLE	PRIMER	SIGHT HEIGHT (Inches)	ZERO (Yds)	VELOCITY (FPS) in Yards			ENERGY (FT-LB) in Yards			TRAJECTORY (Ins) in Yards		BC	BL
									MUZ	25	50	MUZ	25	50	25	50		
32 Auto (7.65mm Browning)	UMC	L32AP	23704	71	Full Metal Jacket	1 1/2	0.9	25	905	879	854	122	115	0.0	-1.9	0.131	4	
									1120	1067	1023	235	215	195	0.0	1.0		
32 H&R Mag	HTP High Terminal Performance	RTP32HR	R20017	85	Jacketed Hollow Point	5 1/2	0.9	25	1020	970	928	220	200	0.0	1.4	0.14	5	
									1500	1408	1324	500	440	389	-0.5	-2.1		
327 Federal Magnum	UMC	L327	R20016	100	Jacketed Soft Point	5 1/2	0.9	25	1295	1182	1093	410	341	0.0	-0.7	0.098	4 ##	
									1220	1095	1009	413	333	283	0.0	-0.9		
357 Mag	Golden Saber Defense	GSD357MA	27600	125	Brass Jacketed Hollow Point	5 1/2	0.9	25	1450	1338	1240	583	497	0.0	-0.3	0.125	4 ##	
									1450	1338	1240	583	497	427	0.0	-0.3		
357 Mag	HTP High Terminal Performance	RTP357M1A	22227	125	Semi-Jacketed Hollow Point	5 1/2	0.9	25	1235	1164	1104	535	475	0.0	-0.7	0.145	4 ##	
									1235	1164	1104	535	475	428	0.0	-0.7		
357 Mag	HTP High Terminal Performance	RTP357M2A	22231	158	Semi-Jacketed Hollow Point	5 1/2	0.9	25	1145	1095	1052	524	479	0.0	-0.9	0.163	8 3/8 ##	
									1350	1245	1157	506	430	372	0.0	-0.5		
357 Sig	Golden Saber Bonded	GSB357SBB	29407	125	Bonded Brass Jacketed Hollow Point	5 1/2	0.9	25	1350	1238	1146	506	425	0.0	-0.5	0.110	4	
									1350	1238	1146	506	425	365	0.0	-0.5		

50 CT = * | 100 CT = ** | 225 CT = *** | 500 CT = **** | 650 CT = ***** | 1000 CT = S | Vented Barrel = # | BC = BALLISTIC COEFFICIENT | BL = Barrel Length | Sight Height for all Cartridges except Core-Lokt and Ultimate Defense (2.5 inches) is 1.5 inches.

CARTRIDGE	LINE	INDEX	ORDER	WT (GR)	BULLET STYLE	PRIMER	SIGHT HEIGHT (Inches)	ZERO (Yds)	VELOCITY (FPS) in Yards			ENERGY (FT-LB) in Yards			TRAJECTORY (Ins) in Yards		BC	BL
									MUZ	25	50	MUZ	25	50	25	50		
9mm Luger	HTP High Terminal Performance	RTP9MM1A	28288	115	Jacketed Hollow Point	1 1/2	0.9	25	1145	1092	1048	335	304	0.0	-0.9	0.155	4	
									1250	1175	1113	399	353	316	0.0	-0.7		
+P †	HTP High Terminal Performance	RTP9MM6A	28293	115	Jacketed Hollow Point	1 1/2	0.9	25	1145	1092	1048	335	304	0.0	-0.9	0.155	4	
									1145	1092	1048	335	304	280	0.0	-0.9		
9mm Luger	UMC	L9MM1	23752 *	115	Jacketed Hollow Point	1 1/2	0.9	25	1145	1092	1048	335	304	0.0	-0.9	0.155	4	
									1145	1092	1048	335	304	280	0.0	-0.9		
9mm Luger	UMC	L9MM1B	23753 **	115	Jacketed Hollow Point	1 1/2	0.9	25	1145	1092	1048	335	304	0.0	-0.9	0.155	4	
									1145	1092	1048	335	304	280	0.0	-0.9		
9mm Luger	UMC	L9MM3	23728 *	115	Full Metal Jacket	1 1/2	0.9	25	1145	1092	1048	335	304	0.0	-0.9	0.155	4	
									1145	1092	1048	335	304	280	0.0	-0.9		
9mm Luger	UMC	L9MM3B	23765 **	115	Full Metal Jacket	1 1/2	0.9	25	1145	1092	1048	335	304	0.0	-0.9	0.155	4	
									1145	1092	1048	335	304	280	0.0	-0.9		
9mm Luger	UMC	L9MM3A	23777 ***	115	Full Metal Jacket	1 1/2	0.9	25	1240	--	--	--	--	--	--	--	--	
									1145	1092	1048	335	304	280	0.0	-0.9		
9mm Luger	UMC	L9MM3BP	23645 S	115	Full Metal Jacket	1 1/2	0.9	25	1145	1092	1048	335	304	0.0	-0.9	0.155	4	
									1145	1092	1048	335	304	280	0.0	-0.9		
9mm Luger	UMC	L9MM3BPA	23645 ****	115	Full Metal Jacket	1 1/2	0.9	25	1145	1092	1048	335	304	0.0	-0.9	0.155	4	
									1145	1092	1048	335	304	280	0.0	-0.9		
9mm Luger	UMC Leadless	LL9MM4	R23809	100	Lead Free Full Metal Jacket	--	--	--	1240	--	--	--	--	--	--	--	--	
									1145	1092	1048	335	304	280	0.0	-0.9		
Remington Range	Remington Range	T9MM3L	R27778 *	115	Full Metal Jacket	1 1/2	0.9	25	1145	1092	1048	335	304	0.0	-0.9	0.155	4	
									1145	1092	1048	335	304	280	0.0	-0.9		
Remington Range	Remington Range	T9MM3A	R23975	115	Full Metal Jacket	1 1/2	0.9	25	1145	1092	1048	335	304	0.0	-0.9	0.155	4	
									1145	1092	1048	335	304	280	0.0	-0.9		
Remington Range	Remington Range	T9MM3A	R23975	115	Full Metal Jacket	1 1/2	0.9	25	1145	1092	1048	335	304	0.0	-0.9	0.155	4	
									1145	1092	1048	335	304	280	0.0	-0.9		
Remington Range	Remington Range	T9MM3B	R23972	115	Full Metal Jacket	1 1/2	0.9	25	1145	1092	1048	335	304	0.0	-0.9	0.155	4	
									1145	1092	1048	335	304	280	0.0	-0.9		
Remington Range	Remington Range	T9MM3CL	R27779 ****	115	Full Metal Jacket	1 1/2	0.9	25	1110	1069	1031	339	314	0.0	-1.0	0.173	4	
									1145	1092	1048	335	304	280	0.0	-0.9		
Remington Range	Remington Range	T9MM2L	R27780 *	124	Full Metal Jacket	1 1/2	0.9	25	1145	1092	1048	335	304	0.0	-0.9	0.155	4	
									1145	1092	1048	335	304	280	0.0	-0.9		
Remington Range	Remington Range	RC9MM11	27681	115	Flat Nose Enclosed Base	LF	0.9	25	1145	1092	1048	335	304	0.0	-0.9	0.155	4	
									1145	1092	1048	335	304	280	0.0	-0.9		

50 CT = * | 100 CT = ** | 225 CT = *** | 500 CT = **** | 650 CT = # | 1000 CT = \$ | Vented Barrel = # | BC = BALLISTIC COEFFICIENT | BL = Barrel Length | Sight Height for all Cartridges except Core-Lokt and Ultimate Defense (2.5 inches) is 1.5 inches.

CARTRIDGE	LINE	INDEX	ORDER	WT (GR)	BULLET STYLE	PRIMER	SIGHT HEIGHT (Inches)	ZERO (Yds)	VELOCITY (FPS) in Yards			ENERGY (FT-LB) in Yards			TRAJECTORY (Ins) in Yards			BC	BL
									MUZ	25	50	MUZ	25	50	MUZ	25	50		
+P †	Golden Saber Bonded	GSB9MMDB	29341	124	Bonded Brass Jacketed Hollow Point	1 1/2	0.9	25	1125	1074	1031	348	317	293	0.0	-1.0	0.149	4	
	Golden Saber Defense	GSD9MMBN	27601	124	Brass Jacketed Hollow Point	1 1/2	0.9	25	1125	1074	1031	348	317	293	0.0	-1.0	0.149	4	
+P †	Golden Saber Defense	GSD9MMC	27603	124	Brass Jacketed Hollow Point	1 1/2	0.9	25	1180	1131	1089	383	352	326	0.0	-0.8	0.189	4	
	Golden Saber Defense Compact	GSC9MMBN	27613	124	Brass Jacketed Hollow Point	1 1/2	0.9	25	1020	992	967	286	271	258	0.0	-1.3	0.189	2.7	
	UMC	L9MM2	23718	124	Full Metal Jacket	1 1/2	0.9	25	1110	1069	1031	339	314	292	0.0	-1.0	0.173	4	
	Golden Saber Bonded	GSB9MMCB	29343	147	Bonded Brass Jacketed Hollow Point	1 1/2	0.9	25	990	964	941	320	304	289	0.0	-1.4	0.182	4	
	HTP High Terminal Performance	RTP9MM8A	28295	147	Jacketed Hollow Point	1 1/2	0.9	25	990	965	941	320	304	289	0.0	-1.4	0.182	4	
	UMC	L9MM9	23732	147	Full Metal Jacket	1 1/2	0.9	25	990	965	941	320	304	289	0.0	-1.4	0.182	4	
	SUBSONIC	S9MM9	28435	147	Flat Nose Enclosed Base	1 1/2	0.9	25	950	927	907	294	281	268	0.0	-1.6	0.182	4	
	Range Clean	RC9MM9	R27691	147	Flat Nose Enclosed Base	LF	0.9	25	950	927	907	294	281	268	0.0	-1.6	0.182	4	
380 Auto	HTP High Terminal Performance	RTP380A1A	22248	88	Jacketed Hollow Point	1 1/2	0.9	25	990	954	923	191	178	166	0.0	-1.5	0.130	4	
	UMC	L380AP	23720 *	95	Full Metal Jacket	1 1/2	0.9	25	955	904	860	192	172	156	0.0	-1.8	0.077	4	
	UMC	L380A1B	R23974 **	95	Full Metal Jacket	1 1/2	0.9	25	955	904	860	192	172	156	0.0	-1.8	0.077	4	
	UMC	L380APA	23721 ***	95	Full Metal Jacket	1 1/2	0.9	25	955	904	860	192	172	156	0.0	-1.8	0.077	4	
	Range Clean	RC380AP2	27683	95	Flat Nose Enclosed Base	LF	0.9	25	955	904	860	192	172	156	0.0	-1.8	0.077	4	

50 CT = * | 100 CT = ** | 225 CT = *** | 500 CT = **** | 650 CT = # | 1000 CT = \$ | Vented Barrel = # | BC = BALLISTIC COEFFICIENT | BL = Barrel Length | Sight Height for all Cartridges except Core-Lokt and Ultimate Defense (2.5 inches) is 1.5 inches.

CARTRIDGE	LINE	INDEX	ORDER	WT (GR)	BULLET STYLE	PRIMER	SIGHT HEIGHT (Inches)	ZERO (Yds)	VELOCITY (FPS) in Yards			ENERGY (FT-LB) in Yards			TRAJECTORY (Ins) in Yards			BC	BL
									MUZ	25	50	MUZ	25	50	MUZ	25	50		
	Golden Saber Defense	GSD380BN	27605	102	Brass Jacketed Hollow Point	1 1/2	0.9	25	940	920	901	200	192	184	0.0	-1.7	0.195	4	
	Golden Saber Defense Compact	GSC380BN	27615	102	Brass Jacketed Hollow Point	1 1/2	0.9	25	815	801	787	150	145	140	0.0	-2.5	0.195	2.7	
38 Super Auto +P	UMC	L38SUP	23722	130	Full Metal Jacket	1 1/2	0.9	25	1215	1152	1099	426	383	348	0.0	-0.7	0.158	4	
38 S&W	Performance WheelGun	RPW38SW	22278	146	Lead Round Nose	1 1/2	0.9	25	685	668	652	152	145	138	0.0	-4.0	0.126	4 ##	
38 Spl+P †	HTP High Terminal Performance	RTP38S10A	22295	110	Semi-jacketed Hollow Point	1 1/2	0.9	25	995	958	926	242	224	210	0.0	-1.5	0.128	4 ##	
+P †	HTP High Terminal Performance	RTP38S16A	22293	110	Semi-jacketed Hollow Point	1 1/2	0.9	25	950	919	890	220	206	194	0.0	-1.7	0.126	4 ##	
+P †	HTP High Terminal Performance	RTP38S21A	22303	125	Semi-jacketed Hollow Point	1 1/2	0.9	25	945	921	898	248	235	224	0.0	-1.7	0.162	4 ##	
+P †	Golden Saber Defense	GSD38SBN	27606	125	Brass Jacketed Hollow Point	1 1/2	0.9	25	975	950	927	264	250	238	0.0	-1.5	0.177	4 ##	
+P †	Golden Saber Defense Compact	GSC38SBN	27617	125	Brass Jacketed Hollow Point	1 1/2	0.9	25	895	876	857	222	213	204	0.0	-1.9	0.174	1.875##	
+P †	UMC	L38S2	23754 *	125	Jacketed Hollow Point	1 1/2	0.9	25	945	921	898	248	235	224	0.0	-1.7	0.162	4 ##	
+P †	UMC	L38S2B	23771 **	125	Jacketed Hollow Point	1 1/2	0.9	25	945	921	898	248	235	224	0.0	-1.7	0.162	4 ##	
	UMC	L38S11	23730 *	130	Full Metal Jacket	1 1/2	0.9	25	800	787	775	185	179	173	0.0	-2.6	0.213	4 ##	
	UMC	L38S11A	23731 **	130	Full Metal Jacket	1 1/2	0.9	25	800	787	775	185	179	173	0.0	-2.6	0.213	4 ##	
	Performance WheelGun	RPW38S3	22267	148	TMWC	1 1/2	0.9	25	710	671	634	166	148	132	0.0	-3.9	0.056	4 ##	
	Performance WheelGun	RPW38S6	22271	158	Lead SWC	1 1/2	0.9	25	755	739	723	200	191	183	0.0	-3.1	0.148	4 ##	
	Performance WheelGun	RPW38S5	22281	158	Lead Round Nose	1 1/2	0.9	25	755	739	723	200	191	183	0.0	-3.1	0.148	4 ##	

50 CT =* | 100 CT =** | 225 CT =*** | 500 CT =**** | 650 CT =# | 1000 CT =S | Vented Barrel=# # BC = BALLISTIC COEFFICIENT | BL = Barrel Length | Sight Height for all Cartridges except Core-Lokt and Ultimate Defense (2.5 inches) is 1.5 inches.

CARTRIDGE	LINE	INDEX	ORDER	WT (GR)	BULLET STYLE	PRIMER	SIGHT HEIGHT (Inches)	ZERO (Yds)	VELOCITY (FPS) in Yards			ENERGY (FT-LB) in Yards			TRAJECTORY (Ins) in Yards		BC	BL
									MUZ	25	50	MUZ	25	50	25	50		
+P †	HTP High Terminal Performance	RTP38S12A	22297	158	Lead Hollow Point	1 1/2	0.9	25	890	872	855	278	267	256	0.0	-2.0	0.187	4 ##
		L38S5	23724	158	Lead Round Nose	1 1/2	0.9	25	755	739	723	200	191	183	0.0	-3.1	0.148	4 ##
38 Short Colt	Performance WheelGun	RPW38SC	22273	125	Lead Round Nose	1 1/2	0.9	25	730	708	686	148	139	131	0.0	-3.4	0.101	6##
		RTP40SW1A	22306	155	Jacketed Hollow Point	1 1/2	0.9	25	1205	1146	1095	500	452	413	0.0	-0.8	0.163	4
40 S&W	UMC	L40SW4	23746 *	165	Full Metal Jacket	1 1/2	0.9	25	1150	1040	964	485	396	339	0.0	-1.1	0.068	4
		L40SW4A	23773 ***	165	Full Metal Jacket	1 1/2	0.9	25	1150	1040	964	485	396	339	0.0	-1.1	0.068	4
	Golden Saber Bonded	GSB40SWAB	29363	165	Bonded Brass Jacketed Hollow Point	1 1/2	0.9	25	1150	1089	1040	484	435	396	0.0	-0.9	0.135	4
		GSD40SWA	27607	165	Brass Jacketed Hollow Point	1 1/2	0.9	25	1150	1089	1040	484	435	396	0.0	-0.9	0.135	4
	Golden Saber Defense	GSD40SWBN	27608	180	Brass Jacketed Hollow Point	1 1/2	0.9	25	1015	986	960	412	388	368	0.0	-1.3	0.177	4
		GSC40SWBN	27618	180	Brass Jacketed Hollow Point	1 1/2	0.9	25	785	770	756	246	237	228	0.0	-2.8	0.174	3.6
	Golden Saber Bonded	GSB40SWBB	29365	180	Bonded Brass Jacketed Hollow Point	1 1/2	0.9	25	1015	986	960	412	388	368	0.0	-1.3	0.177	4
		RTP40SW2A	22308	180	Jacketed Hollow Point	1 1/2	0.9	25	1015	986	960	412	388	368	0.0	-1.3	0.177	4
	UMC	L40SW2	23694 *	180	Jacketed Hollow Point	1 1/2	0.9	25	1015	986	960	412	388	368	0.0	-1.3	0.177	4
		L40SW2B	23687 **	180	Jacketed Hollow Point	1 1/2	0.9	25	1015	986	960	412	388	368	0.0	-1.3	0.177	4
	UMC	L40SW3	23742 *	180	Full Metal Jacket	1 1/2	0.9	25	990	964	940	392	371	353	0.0	-1.4	0.178	4

50 CT =* | 100 CT =** | 225 CT =*** | 500 CT =**** | 650 CT =# | 1000 CT =S | Vented Barrel=# # BC = BALLISTIC COEFFICIENT | BL = Barrel Length | Sight Height for all Cartridges except Core-Lokt and Ultimate Defense (2.5 inches) is 1.5 inches.

CARTRIDGE	LINE	INDEX	ORDER	WT (GR)	BULLET STYLE	PRIMER	SIGHT HEIGHT (Inches)	ZERO (Yds)	VELOCITY (FPS) in Yards			ENERGY (FT-LB) in Yards			TRAJECTORY (Ins) in Yards		BC	BL
									MUZ	25	50	MUZ	25	50	25	50		
10mm Auto	UMC	L40SW3B	23795 **	180	Full Metal Jacket	1 1/2	0.9	25	990	964	940	392	371	353	0.0	-1.4	0.178	4
		L40SW3A	23779 ***	180	Full Metal Jacket	1 1/2	0.9	25	990	964	940	392	371	353	0.0	-1.4	0.178	4
	UMC	L40SW3BP	23647 #	180	Full Metal Jacket	1 1/2	0.9	25	990	964	940	392	371	353	0.0	-1.4	0.178	4
		T40SW3L	27781	180	Full Metal Jacket	1 1/2	0.9	25	990	964	940	392	371	353	0.0	-1.4	0.178	4
	Range Clean	RC40SW5	27685	180	Flat Nose Enclosed Base	LF	0.9	25	990	964	940	392	371	353	0.0	-1.4	0.178	4
		L10MM6	23706	180	Full Metal Jacket	2 1/2	0.9	25	1160	1112	1071	538	494	458	0.0	-0.8	0.180	5
	Golden Saber Bonded	GSB10MMAB	R21368	180	Bonded Brass Jacketed Hollow Point	2 1/2	0.9	25	1160	1111	1070	538	494	457	0.0	-0.8	0.177	5
		GSD10MMBN	R21369	180	Brass Jacketed Hollow Point	2 1/2	0.9	25	1160	1111	1070	538	494	457	0.0	-0.8	0.177	5
	Golden Saber Defense Compact	GSB10MMBN	R21370	180	Brass Jacketed Hollow Point	2 1/2	0.9	25	1080	1040	1008	464	433	406	0.0	-1.1	0.174	3.78
		RHH10MM1	R20231	200	Semi-Jacketed Hollow Point	2 1/2	0.9	25	1110	1084	1060	547	522	498	0.0	-1.0	0.290	5
41 Remington Mag	Core-Lokt Handgun Hunting	RHH41MG1	R20225	210	Semi-Jacketed Hollow Point	2 1/2	0.9	25	1240	1181	1130	717	650	595	0.0	-0.7	0.180	4 ##
		RTP41MG1A	23000	210	Jacketed Soft Point	2 1/2	0.9	25	1300	1226	1162	788	701	629	0.0	-0.5	0.159	4 ##
44 Remington Mag	UMC	L44MG7	23744	180	Jacketed Soft Point	2 1/2	0.9	25	1610	1482	1366	1036	878	745	0.0	-0.1	0.123	4 ##
		RHH44MG1	R20228	240	Semi-Jacketed Hollow Point	2 1/2	0.9	25	1220	1161	1110	793	718	656	0.0	-0.7	0.170	4 ##
	HTP High Terminal Performance	RTP44MG2A	23002	240	Jacketed Soft Point	2 1/2	0.9	25	1180	1126	1081	742	676	623	0.0	-0.8	0.172	4 ##
		RTP44MG3A	23010	240	Semi-Jacketed Hollow Point	2 1/2	0.9	25	1180	1126	1081	742	676	623	0.0	-0.8	0.172	4 ##

50 CT = * | 100 CT = ** | 225 CT = *** | 500 CT = **** | 650 CT = ***** | 1000 CT = S | Vented Barrel = # | BC = BALLISTIC COEFFICIENT | BL = Barrel Length | Sight Height for all Cartridges except Core-Lokt and Ultimate Defense (2.5 inches) is 1.5 inches.

CARTRIDGE	LINE	INDEX	ORDER	WT (GR)	BULLET STYLE	PRIMER	SIGHT HEIGHT (Inches)	ZERO (Yds)	VELOCITY (FPS) in Yards			ENERGY (FT-LB) in Yards			TRAJECTORY (Ins) in Yards		BC	BL
									MUZ	25	50	MUZ	25	50	25	50		
44 S&W Spl	Performance WheelGun	RPW44SW	22333	246	Lead Round Nose	2 1/2	0.9	25	755	740	725	311	299	287	0.0	-3.1	0.158	4 ##
									830	804	780	344	323	304	0.0	-2.5	0.101	4 ##
									750	733	717	312	298	285	0.0	-3.1	0.142	4 ##
45 Colt	Performance WheelGun	RPW45C1	22338	225	Lead SWC	2 1/2	0.9	25	830	804	780	344	323	304	0.0	-2.5	0.101	4 ##
									750	733	717	312	298	285	0.0	-3.1	0.142	4 ##
									850	830	811	369	352	335	0.0	-2.3	0.149	4 ##
45 Auto	HTP High Terminal Performance	RTP45C1A	23012	230	Jacketed Hollow Point	2 1/2	0.9	25	1000	968	939	411	385	362	0.0	-1.4	0.149	4
									1015	981	951	423	395	371	0.0	-1.4	0.149	4
									1015	981	951	423	395	372	0.0	-1.4	0.149	4
+P †	Golden Saber Defense	GSD45APA	27609	185	Brass Jacketed Hollow Point	2 1/2	0.9	25	1140	1086	1042	534	485	446	0.0	-0.9	0.150	4
									1015	981	951	423	395	372	0.0	-1.4	0.149	4
									875	853	833	391	372	354	0.0	-2.1	0.148	4
HTP High Terminal Performance	Golden Saber Bonded	RTP45AP7A	21455	230	Jacketed Hollow Point	2 1/2	0.9	25	835	817	800	356	341	326	0.0	-2.4	0.161	4
									875	853	833	391	372	354	0.0	-2.1	0.148	4
									725	710	695	268	257	247	0.0	-3.4	0.149	3
Golden Saber Defense Compact	UMC	L45AP4	23726 *	230	Full Metal Jacket	2 1/2	0.9	25	835	817	800	356	341	326	0.0	-2.4	0.161	5
									835	817	800	356	341	326	0.0	-2.4	0.161	5
									835	817	800	356	341	326	0.0	-2.4	0.161	5

50 CT = * | 100 CT = ** | 225 CT = *** | 500 CT = **** | 650 CT = ***** | 1000 CT = S | Vented Barrel = # | BC = BALLISTIC COEFFICIENT | BL = Barrel Length | Sight Height for all Cartridges except Core-Lokt and Ultimate Defense (2.5 inches) is 1.5 inches.

CARTRIDGE	LINE	INDEX	ORDER	WT (GR)	BULLET STYLE	PRIMER	SIGHT HEIGHT (Inches)	ZERO (Yds)	VELOCITY (FPS) in Yards			ENERGY (FT-LB) in Yards			TRAJECTORY (Ins) in Yards		BC	BL
									MUZ	25	50	MUZ	25	50	25	50		
45 GAP	UMC	L45AP4A	23781 ***	230	Full Metal Jacket	2 1/2	0.9	25	835	817	800	356	341	326	0.0	-2.4	0.161	5
									835	817	800	356	341	326	0.0	-2.4	0.161	5
									830	812	795	352	337	323	0.0	-2.4	0.159	5
45 GAP	UMC	L45AP7B	23726 *	230	Jacketed Hollow Point	2 1/2	0.9	25	835	817	800	356	341	326	0.0	-2.4	0.161	5
									835	817	800	356	341	326	0.0	-2.4	0.161	5
									835	817	800	356	341	326	0.0	-2.4	0.161	5
45 GAP	UMC	L45AP7B	23689 **	230	Jacketed Hollow Point	2 1/2	0.9	25	835	817	800	356	341	326	0.0	-2.4	0.161	5
									835	817	800	356	341	326	0.0	-2.4	0.161	5
									835	817	800	356	341	326	0.0	-2.4	0.161	5
45 GAP	Range Clean	RC45AP8	27687	230	Flat Nose Enclosed Base	2 1/2	0.9	25	835	817	800	356	341	326	0.0	-2.4	0.161	5
									835	817	800	356	341	326	0.0	-2.4	0.161	5
									835	817	800	356	341	326	0.0	-2.4	0.161	5
45 GAP	UMC	L45GAP4	23691	230	Full Metal Jacket	2 1/2	0.9	25	880	860	841	395	378	361	0.0	-2.0	0.162	5
									880	860	841	395	378	361	0.0	-2.0	0.162	5
									880	860	841	395	378	361	0.0	-2.0	0.162	5

Shotshell Ballistics

Slug

GAUGE	LINE	INDEX	ORDER NO.	LENGTH	SLUG WEIGHT (GR.)	SLUG STYLE	SIGHT HEIGHT	VELOCITY (FPS) IN YDS			ENERGY (FT-LB) IN YDS			TRAJECTORY (Inches) IN YDS			BC	BARREL LENGTH*
								MUZZ	50	100	MUZZ	50	100	50	100	150		
410 Bore	Sluggier Rifled Slug	SP41RS	20618	2 1/2	1/5 OZ	Rifled Slug	1.5	1830	1335	1040	654	348	211	0.0	-3.5	--	0.064	26
16 Gauge	Sluggier Rifled Slug	SP16RS	20614	2 3/4	4/5 OZ	Rifled Slug HP	1.5	1600	1175	965	1989	1072	724	0.0	-4.8	--	0.063	28
20 Gauge	Premier AccuTip Slug	PRA20	20496	2 3/4	260 GR.	Power Port Tip	1.5	1850	1610	1399	1976	1496	1130	2.7	3.6	0.0	0.144	26
	Premier AccuTip Slug	PRA20M	20498	3	260 GR.	Power Port Tip	1.5	1900	1655	1438	2084	1581	1193	2.5	3.4	0.0	0.144	26
	Sluggier High Velocity Rifled Slug	SPHV20RS	28608	2 3/4	1/2 OZ	Rifled Slug	1.5	1800	1541	1321	1574	1154	847	0.0	-2.2	--	0.130	26
	Sluggier Rifled Slug	SP20RS	20616	2 3/4	7/8 OZ	Rifled Slug HP	1.5	1580	1240	1034	1513	931	648	0.0	-4.2	--	0.081	26
12 Gauge	Premier AccuTip Slug	PRA12	20727	2 3/4	385 GR.	Power Port Tip	1.5	1850	1611	1401	2925	2218	1677	2.7	3.6	0.0	0.145	30
	Premier AccuTip Slug	PRA12M	20731	3	385 GR.	Power Port Tip	1.5	1900	1656	1439	3086	2344	1771	2.5	3.4	0.0	0.145	30
	Sluggier High Velocity Rifled Slug	SPHV12RS	28600	2 3/4	7/8 OZ	Rifled Slug	1.5	1800	1252	978	2755	1334	813	0.0	-4.1	--	0.055	30
	Sluggier High Velocity Rifled Slug	SPHV12MRS	28604	3	7/8 OZ	Rifled Slug	1.5	1875	1302	998	2989	1442	847	0.0	-3.7	--	0.055	30
	Managed Recoil Sluggier Rifled Slug	RL12RS	20290	2 3/4	1 OZ	Rifled Slug	1.5	1200	988	873	1397	948	739	0.0	-7.4	--	0.068	30
	Sluggier Rifled Slug	SP12RS	20300	2 3/4	1 OZ	Rifled Slug	1.5	1560	1203	1004	2361	1403	976	0.0	-4.5	--	0.075	30
	Sluggier Rifled Slug	S12SRS	20302	2 3/4	1 OZ	Rifled Slug	1.5	1680	1285	1045	2378	1605	1059	0.0	-3.8	--	0.075	30
	Sluggier Rifled Slug	S12MRS	20270	3	1 OZ	Rifled Slug	1.5	1760	1345	1075	3005	1753	1121	0.0	-3.4	--	0.075	30

Target and Game

PRODUCT NAME	INDEX	ORDER	GAUGE	LENGTH	DRAM EQUIV.	FPS	OZ SHOT	SHOT
Royal Flush	RF124	R20556	12	2 3/4	0	1550	1 1/4	4
	RF125	R20557	12	2 3/4	0	1550	1 1/4	5
	RF126	R20558	12	2 3/4	0	1550	1 1/4	6
	RF20M4	R20559	20	3	0	1425	1	4
	RF20M5	R20560	20	3	0	1425	1	5
	RF20M6	R20561	20	3	0	1425	1	6
Peter's Premier	PPT12175	28758	12	2 3/4	0	1290	1	7 1/2
	PPT12175	28745	12	2 3/4	0	1145	1 1/8	7 1/2
	PPT1218	28746	12	2 3/4	0	1145	1 1/8	8
	PPT12H75	R28749	12	2 3/4	0	1200	1 1/8	7 1/2
	PPT12H8	28751	12	2 3/4	0	1200	1 1/8	8
Nitro Turkey	NT12S4	26690	12	2 3/4	0	1260	1 1/2	4
	NT12S5	26688	12	2 3/4	0	1260	1 1/2	5
	NT12H4	26693	12	3	0	1210	1 7/8	4
	NT12H5	26695	12	3	0	1210	1 7/8	5
	NT12H6A	26673	12	3	0	1210	1 7/8	6
	NT12H6	26697	12	3	0	1210	1 7/8	6
	NT12354	26710	12	3 1/2	0	1300	2	4
	NT12355	26708	12	3 1/2	0	1300	2	5
	NT12356	26712	12	3 1/2	0	1300	2	6
	NT12356A	26711	12	3 1/2	0	1300	2	6
Premier Magnum Turkey High Velocity	PHV12M4A	28029	12	3	0	1300	1 3/4	4
	PHV12M5A	28031	12	3	0	1300	1 3/4	5
	PHV1235M4A	28039	12	3 1/2	0	1300	2	4
	PHV1235M5A	28041	12	3 1/2	0	1300	2	5
	PHV20M5A	20119	20	3	0	1300	1 1/8	5
Premier Magnum Turkey	P10HM4A	24395	10	3 1/2	0	1210	2 1/4	4

PRODUCT NAME	INDEX	ORDER	GAUGE	LENGTH	DRAM EQUIV.	FPS	OZ SHOT	SHOT
	P12XHM4A	26801	12	3	0	1175	2	4
	P12XHM5A	26803	12	3	0	1175	2	5
	P12XHM6A	26805	12	3	0	1175	2	6
	P1235M4A	26833	12	3 1/2	0	1150	2 1/4	4
	P20XHM6A	26859	20	3	0	1185	1 1/4	6
Nitro Steel	NS110M2	20853	10	3 1/2	0	1450	1 1/2	2
	NS12HVS4	20803	12	2 3/4	0	1390	1 1/8	4
	NS12SB	20650	12	2 3/4	0	1275	1 1/4	BB
	NS12S2	20654	12	2 3/4	0	1275	1 1/4	2
	NS12S4	20658	12	2 3/4	0	1275	1 1/4	4
	NS12MB	20794	12	3	0	1450	1 1/4	BB
	NS12M1	20796	12	3	0	1450	1 1/4	1
	NS12M2	20798	12	3	0	1450	1 1/4	2
	NS12M3	20800	12	3	0	1450	1 1/4	3
	NS12M4	20802	12	3	0	1450	1 1/4	4
	NS12HMT	20852	12	3	0	1300	1 3/8	T
	NS12HMB	20856	12	3	0	1300	1 3/8	BB
	NS12HM2	20860	12	3	0	1300	1 3/8	2
	NS12HM4	20864	12	3	0	1300	1 3/8	4
	DPS122X4	R20321	12	3	0	1450	1 1/4	2 x 4
	ARDPS122X4	R20049	12	3	0	1450	1 1/4	2 x 4
	ARDPS122X415	R20051	12	3	0	1450	1 1/4	2 x 4
	DPS122X6	R26643	12	3	0	1450	1 1/4	2 x 6
	DPS12BBX4	R26645	12	3	0	1450	1 1/4	BB x 4
	DPS12BBX2	R20323	12	3	0	1450	1 1/4	BB x 2
	NS11235BB	20837	12	3 1/2	0	1500	1 1/2	BB
	NS112352	20839	12	3 1/2	0	1500	1 1/2	2
	NS16HV2	20941	16	2 3/4	0	1300	15/16	2
	NS16HV4	20943	16	2 3/4	0	1300	15/16	4
	NS120M4	20769	20	3	0	1400	1	4

PRODUCT NAME	INDEX	ORDER	GAUGE	LENGTH	DRAM EQUIV.	FPS	OZ SHOT	SHOT
Nitro Sporting Clays	STS28NSC7	28868	28	2 3/4	2	1300	3/4	7 1/2
	STS410NSC8	28879	.410 Bore	2 1/2	MAX	1300	1/2	8
	STS12NSCL17	R20132	12	2 3/4	3-1/4	1290	1	7 1/2
	STS12NSC17	28850	12	2 3/4	MAX	1350	1	7 1/2
	STS20NSC7	28860	20	2 3/4	3	1300	7/8	7 1/2
	STS12NSC7	20264	12	2 3/4	MAX	1300	1 1/8	7 1/2
	STS12NSC8	20266	12	2 3/4	MAX	1300	1 1/8	8
	STS12NSCL7	R20156	12	2 3/4	3-1/4	1325	7/8	7 1/2
Nitro Pigeon	NP127	28681	12	2 3/4	0	1300	1 1/4	7 1/2
	NP128	28682	12	2 3/4	0	1300	1 1/4	8
Nitro Pheasant	NP124	28620	12	2 3/4	0	1400	1 1/4	4
	NP125	28622	12	2 3/4	0	1400	1 1/4	5
	NP126	28624	12	2 3/4	0	1400	1 1/4	6
	NP12M4	28632	12	2 3/4	0	1300	1 3/8	4
	NP12M5	28634	12	2 3/4	0	1300	1 3/8	5
	NP12M6	28636	12	2 3/4	0	1300	1 3/8	6
	NP205	28646	20	2 3/4	0	1300	1	5
	NP206	28648	20	2 3/4	0	1300	1	6
	NP20M5	28651	20	3	0	1185	1 1/4	5
	NP20M6	28653	20	3	0	1185	1 1/4	6
Premier Nitro 27 Handicap	STS12NH17	20227	12	2 3/4	HDCP	1290	1	7 1/2
	STS12NH7	20222	12	2 3/4	HDCP	1235	1 1/8	7 1/2
	STS12NH8	20224	12	2 3/4	HDCP	1235	1 1/8	8
Nitro Magnum	NM12S2	26676	12	2 3/4	0	1260	1 1/2	2
	NM12S4	26678	12	2 3/4	0	1260	1 1/2	4
	NM124	26674	12	3	0	1280	1-5/8	4
	NM126	20376	12	3	0	1280	1-5/8	6
	NM12H2	26682	12	3	0	1210	1 7/8	2
	NM12H4	26684	12	3	0	1210	1 7/8	4
	NM12H6	26685	12	3	0	1210	1 7/8	6

PRODUCT NAME	INDEX	ORDER	GAUGE	LENGTH	DRAM EQUIV.	FPS	OZ SHOT	SHOT
	NM20S4	20664	20	2 3/4	0	1175	1 1/8	4
	NM20S6	20666	20	2 3/4	0	1175	1 1/8	6
	NM20H4	20672	20	3	0	1185	1 1/4	4
	NM20H6	20674	20	3	0	1185	1 1/4	6
Hypersonic Steel	HSS12B	26741	12	3	0	1700	1 1/8	BB
	HSS122	26743	12	3	0	1700	1 1/8	2
	HSS124	26745	12	3	0	1700	1 1/8	4
	HSS12MB	26769	12	3	0	1700	1 1/4	BB
	HSS12M1	26771	12	3	0	1700	1 1/4	1
	HSS12M2	26775	12	3	0	1700	1 1/4	2
	HSS12M3	26776	12	3	0	1700	1 1/4	3
	HSS12M4	26777	12	3	0	1700	1 1/4	4
	HSS1235B	26793	12	3 1/2	0	1700	1 3/8	BB
	HSS12352	26795	12	3 1/2	0	1700	1 3/8	2
	HSS12354	26799	12	3 1/2	0	1700	1 3/8	4
	HSS20M2	26823	20	3	0	1600	7/8	2
	HSS20M4	26825	20	3	0	1600	7/8	4
Heavy Dove	RHD1275	28755	12	2 3/4	0	1255	1 1/8	7 1/2
	RHD128	28757	12	2 3/4	0	1255	1 1/8	8
	RHD2075	28777	20	2 3/4	0	1165	1	7 1/2
	RHD208	28779	20	2 3/4	0	1165	1	8
Game Loads	GL126	20028	12	2 3/4	0	1290	1	6
	GL127	20030	12	2 3/4	0	1290	1	7 1/2
	GL128	20032	12	2 3/4	0	1290	1	8
	GL166	20034	16	2 3/4	0	1200	1	6
	GL167	20036	16	2 3/4	0	1200	1	7 1/2
	GL168	20038	16	2 3/4	0	1200	1	8
	GL206	20040	20	2 3/4	0	1225	7/8	6
	GL207	20042	20	2 3/4	0	1225	7/8	7 1/2
	GL208	20044	20	2 3/4	0	1225	7/8	8

PRODUCT NAME	INDEX	ORDER	GAUGE	LENGTH	DRAM EQUIV.	FPS	OZ SHOT	SHOT
	GL4106	20014	.410 Bore	2 1/2	0	1200	1/2	6
Premier Bismuth	RHB12M2	R20500	12	3	0	1400	1 3/8	2
	RHB12M5	R20501	12	3	0	1400	1 3/8	5
	RHB12S2	R20503	12	2 3/4	0	1400	1 1/4	2
	RHB12S5	R20505	12	2 3/4	0	1400	1 1/4	5
	RHB20M2	R20507	20	3	0	1400	1 1/8	2
	RHB20M5	R20508	20	3	0	1400	1 1/8	5
	RHB20S5	R20509	20	2 3/4	0	1300	1	5
	RHB4104	R20514	.410 Bore	3	0	1200	9/16	4
Duck Club	DCS12BSS	R26781	12	3	0	1400	1 1/4	BB
	DCS122	R26782	12	3	0	1400	1 1/4	2
	DCS123	R26783	12	3	0	1400	1 1/4	3
	DCS124	R26785	12	3	0	1400	1 1/4	4
	DCS203	R26787	20	3	0	1300	1	3
	DCS204	R26786	20	3	0	1300	1	4
Gun Club	GC12LR8A	20243	12	2 3/4	2 1/2	1100	1 1/8	8
	GC12LR8	R20029	12	2 3/4	2 3/4	1145	1 1/8	8
	GC12LR8A	R20031	12	2 3/4	2 1/2	1100	1 1/8	8
	GC12LR8	20081	12	2 3/4	2 3/4	1185	1	8
	GC12LR7	20244	12	2 3/4	2 3/4	1145	1 1/8	7 1/2
	GC12LR8	20230	12	2 3/4	2 3/4	1145	1 1/8	8
	GC12LR9	20248	12	2 3/4	2 3/4	1145	1 1/8	9
	GC127	20232	12	2 3/4	3	1200	1 1/8	7 1/2
	GC128	20234	12	2 3/4	3	1200	1 1/8	8
	GC207	20239	20	2 3/4	2 1/2"	1200	7/8	7 1/2
	GC208	20235	20	2 3/4	2 1/2"	1200	7/8	8
	GC209	20236	20	2 3/4	2 1/2"	1200	7/8	9
Gun Club Cure	GC12LR8	R20029	12	2 3/4	2 3/4	1145	1 1/8	8
Express XLR Extra Long Range	SP122	20143	12	2 3/4	0	1330	1 1/4	2
	SP124	20145	12	2 3/4	0	1330	1 1/4	4

PRODUCT NAME	INDEX	ORDER	GAUGE	LENGTH	DRAM EQUIV.	FPS	OZ SHOT	SHOT
	SP125	20147	12	2 3/4	0	1330	1 1/4	5
	SP126	20149	12	2 3/4	0	1330	1 1/4	6
	SP1275	20151	12	2 3/4	0	1330	1 1/4	7 1/2
	NEHV125	20167	12	2 3/4	0	1450	1 1/8	5
	NEHV126	20168	12	2 3/4	0	1450	1 1/8	6
	NEHV1275	20169	12	2 3/4	0	1450	1 1/8	7 1/2
	SP164	28003	16	2 3/4	0	1295	1 1/8	4
	SP166	28007	16	2 3/4	0	1295	1 1/8	6
	SP1675	28009	16	2 3/4	0	1295	1 1/8	7 1/2
	SP204	20333	20	2 3/4	0	1220	1	4
	SP205	20335	20	2 3/4	0	1220	1	5
	SP206	20337	20	2 3/4	0	1220	1	6
	SP2075	20339	20	2 3/4	0	1220	1	7 1/2
	NEHV206	20181	20	2 3/4	0	1350	7/8	6
	NEHV2075	20183	20	2 3/4	0	1350	7/8	7 1/2
	SP286	28047	28	2 3/4	0	1295	3/4	6
	SP2875	28049	28	2 3/4	0	1295	3/4	7 1/2
	SP4104	20743	.410 Bore	2 1/2	0	1250	1/2	4
	SP4106	20745	.410 Bore	2 1/2	0	1250	1/2	6
	SP41075	20747	.410 Bore	2 1/2	0	1250	1/2	7 1/2
	SP4134	20771	.410 Bore	3	0	1135	11/16	4
	SP4136	20775	.410 Bore	3	0	1135	11/16	6
	SP41375	20777	.410 Bore	3	0	1135	11/16	7 1/2
Sportsman Hi-Speed Steel	SSTHV10B	26605	10	3 1/2	0	1500	1 3/8	BB
	SSTHV102	26607	10	3 1/2	0	1500	1 3/8	2
	SST126	20005	12	2 3/4	0	1365	1	6
	SST127	20007	12	2 3/4	0	1365	1	7
	SST12S2	20934	12	2 3/4	0	1375	1 1/8	2
	SST12S4	20936	12	2 3/4	0	1375	1 1/8	4
	SSTHV12HB	20973	12	3	0	1550	1 1/8	BB

PRODUCT NAME	INDEX	ORDER	GAUGE	LENGTH	DRAM EQUIV.	FPS	OZ SHOT	SHOT
	SSTHV12H2	20977	12	3	0	1550	1 1/8	2
	SSTHV12H4	20981	12	3	0	1550	1 1/8	4
	SSTHV12HMB	20987	12	3	0	1400	1 1/4	BB
	SSTHV12HM1	20791	12	3	0	1400	1 1/4	1
	SSTHV12HM2	20989	12	3	0	1400	1 1/4	2
	SSTHV12HM3	20795	12	3	0	1400	1 1/4	3
	SSTHV12HM4	20991	12	3	0	1400	1 1/4	4
	SST12HMB	20900	12	3	0	1300	1 3/8	BB
	SST12HM2	20904	12	3	0	1300	1 3/8	2
	SSTHV1235B	20997	12	3 1/2	0	1550	1 3/8	BB
	SSTHV12352	20999	12	3 1/2	0	1550	1 3/8	2
	SST207	20009	20	2 3/4	0	1425	3/4	7
	SST20M2	20879	20	3	0	1300	1	2
	SST20M4	20881	20	3	0	1300	1	4
Premier TSS	TSS1237	28043	12	3	0	1200	1 3/4	7
	TSS1239	28045	12	3	0	1200	1 3/4	9
	TSS2037	28063	20	3	0	1100	1 1/2	7
	TSS2039	28065	20	3	0	1100	1 1/2	9
	TSS41039	28069	.410 Bore	3	0	1100	13/16	9
Premier STS	STS12LR7	20240	12	2 3/4	2 1/2"	1100	1 1/8	7 1/2
	STS12LR8	20242	12	2 3/4	2 1/2"	1100	1 1/8	8
	STS12I8	20155	12	2 3/4	2 3/4	1185	1	8
	STS12I7	20110	12	2 3/4	2 3/4	1145	1 1/8	7 1/2
	STS12I8	20112	12	2 3/4	2 3/4	1145	1 1/8	8
	STS12L85	20114	12	2 3/4	2 3/4	1145	1 1/8	8 1/2
	STS12I9	20116	12	2 3/4	2 3/4	1145	1 1/8	9
	STS12LH7	20250	12	2 3/4	3	1200	1 1/8	7 1/2
	STS12LH8	20252	12	2 3/4	3	1200	1 1/8	8
	STS20SC8	28059	20	2 3/4	2 1/2	1200	7/8	8
	STS209	20217	20	2 3/4	2 1/2	1200	7/8	9

PRODUCT NAME	INDEX	ORDER	GAUGE	LENGTH	DRAM EQUIV.	FPS	OZ SHOT	SHOT
	STS28SC8	28057	28	2 3/4	2	1250	3/4	8
	STS289	28053	28	2 3/4	2	1250	3/4	9
	STS4109	20750	.410 Bore	2 1/2	MAX	1275	1/2	9
Pheasant Load	PL124	20046	12	2 3/4	0	1330	1 1/4	4
	PL125	20024	12	2 3/4	0	1330	1 1/4	5
	PL126	20048	12	2 3/4	0	1330	1 1/4	6
	PL127	20050	12	2 3/4	0	1330	1 1/4	7 1/2
	PL166	20054	16	2 3/4	0	1295	1 1/8	6
	PL204	20058	20	2 3/4	0	1220	1	4
	PL205	20018	20	2 3/4	0	1220	1	5
	PL206	20060	20	2 3/4	0	1220	1	6
Wingmaster HD	RW12S4	20693	12	2 3/4	0	1325	1 1/4	4
	RW12S6	20695	12	2 3/4	0	1325	1 1/4	6
	RW122	20871	12	3	0	1450	1 1/4	2
	RW124	20873	12	3	0	1450	1 1/4	4
	RW126	20875	12	3	0	1450	1 1/4	6
	RW12M2	20685	12	3	0	1450	1 3/8	2
	RW12M4	20687	12	3	0	1450	1 3/8	4
	RW12M6	20689	12	3	0	1450	1 3/8	6
	RW12HM2	20903	12	3	0	1300	1 1/2	2
	RW12HM4	20905	12	3	0	1300	1 1/2	4
	RW1235MB	20655	12	3 1/2	0	1300	1 3/4	BB
	RW1235M2	20657	12	3 1/2	0	1300	1 3/4	2
	RW1235M4	20659	12	3 1/2	0	1300	1 3/4	4
	RW20M4	20763	20	3	0	1300	1 1/8	4
Ultimate Defense Buckshot Managed Recoil	RL12BK00	20282	12	2 3/4	0	1200	8 pel	00 BK
Ultimate Defense Buckshot	12B009HD	20713	12	2 3/4	0	1325	9 pel	00 BK
	12B008RRHD	20711	12	2 3/4	0	1200	8 pel	00 BK
	12HB00HD	20633	12	3	4	1225	15 pel	00
	12HB4HD	20639	12	3	4	1225	41 pel	4

PRODUCT NAME	INDEX	ORDER	GAUGE	LENGTH	DRAM EQUIV.	FPS	OZ SHOT	SHOT
	12BRR4HD	20637	12	2 3/4	0	1200	21 pel	4
	20BRR3HD	20681	20	2 3/4	0	1140	17 pel	3
	410B000HD	20697	.410 Bore	2 1/2	0	1225	4 pel	000 BK
	413B000HD	20707	.410 Bore	3	0	1125	5 pel	000 BK
Express Magnum Buckshot	12S800	20632	12	2 3/4	0	1290	12 pel	00
	12HB000	20408	12	3	0	1225	10 pel	000
	12HB00	20636	12	3	0	1225	15 pel	00
	12HB4	20640	12	3	0	1225	41 pel	4
	1235B00	20280	12	3 1/2	0	1125	18 pel	00
Express Buckshot	12B000	20406	12	2 3/4	0	1325	8 pel	000
	12B00	20620	12	2 3/4	0	1325	9 pel	00
	12B0	20622	12	2 3/4	0	1275	12 pel	0
	12B1	20624	12	2 3/4	0	1250	16 pel	1
	12B4	20626	12	2 3/4	0	1325	27 pel	4
	20B3	20630	20	2 3/4	0	1220	20 pel	3
Low Decibel	SP410LD9	R20740	.410 Bore	2 1/2	0	650	1/2	9

Remington®



2025 OLE GRANDDAD BULLET KNIFE



The Tradition Continues

Building on over a century of American tradition, Remington is thrilled to unveil the 2025 Limited Edition Bullet Knife, Ole Granddad. Crafted with pride in the USA, our Bullet Knives have long been some of the most sought-after collectibles in the world of cutlery. Knife enthusiasts and collectors alike recognize the enduring value of Remington's heritage pieces. The 2025 Ole Granddad Bullet Knife is no exception—destined to become a treasured addition to any serious collection.